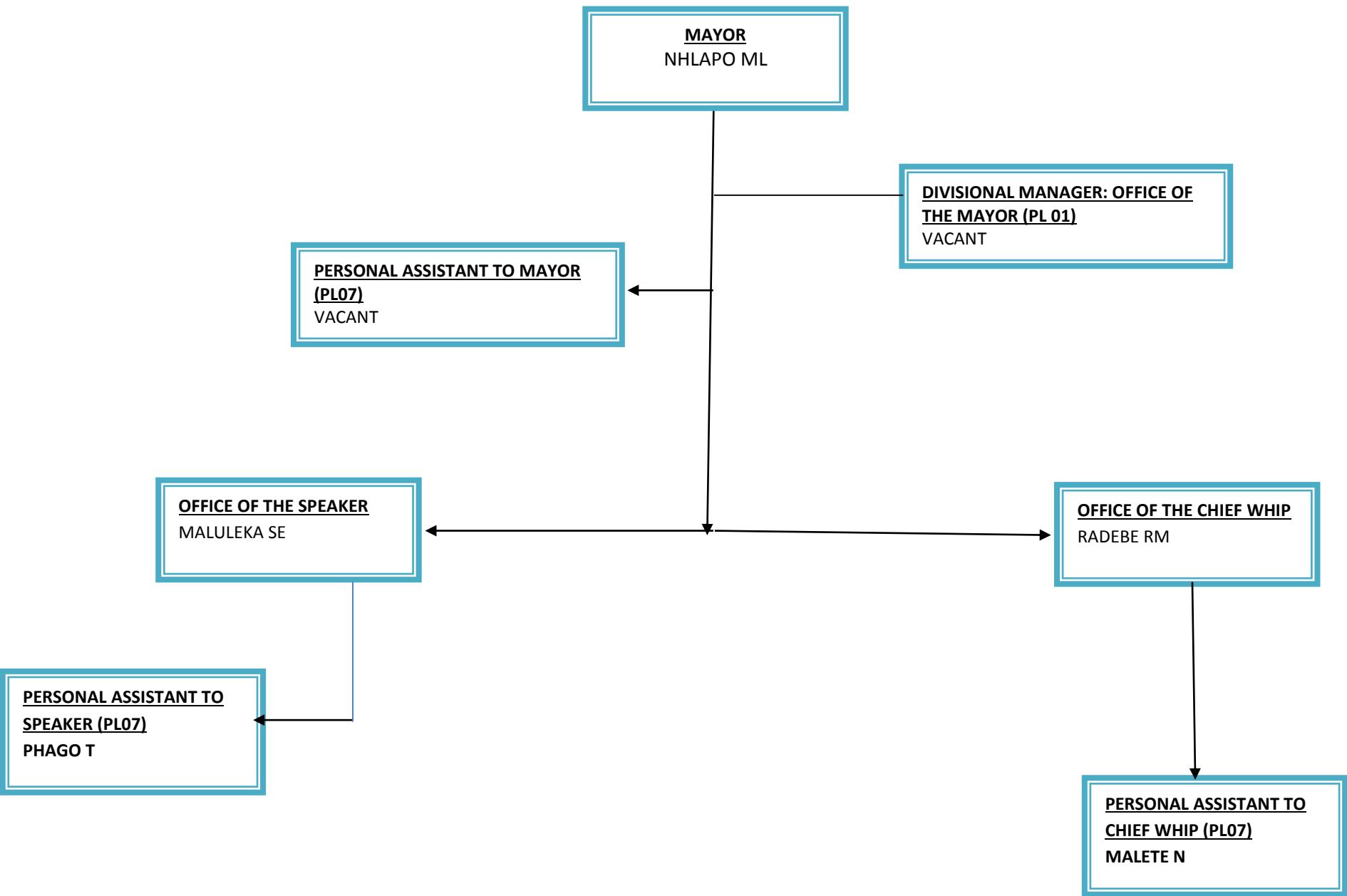


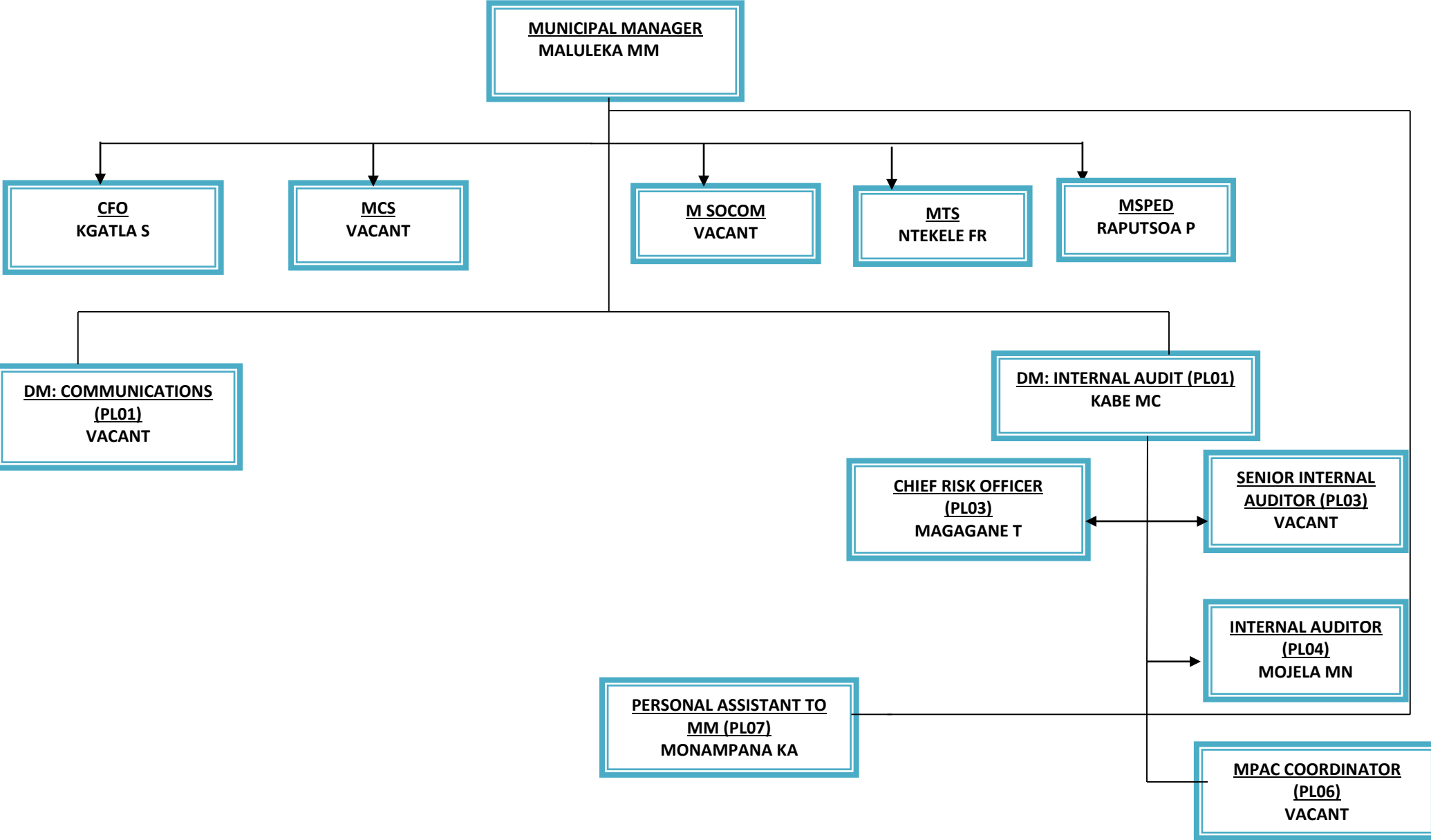
ORGANIZATIONAL STRUCTURE 2016/17

MAYOR'S OFFICE ORGANOGRAM

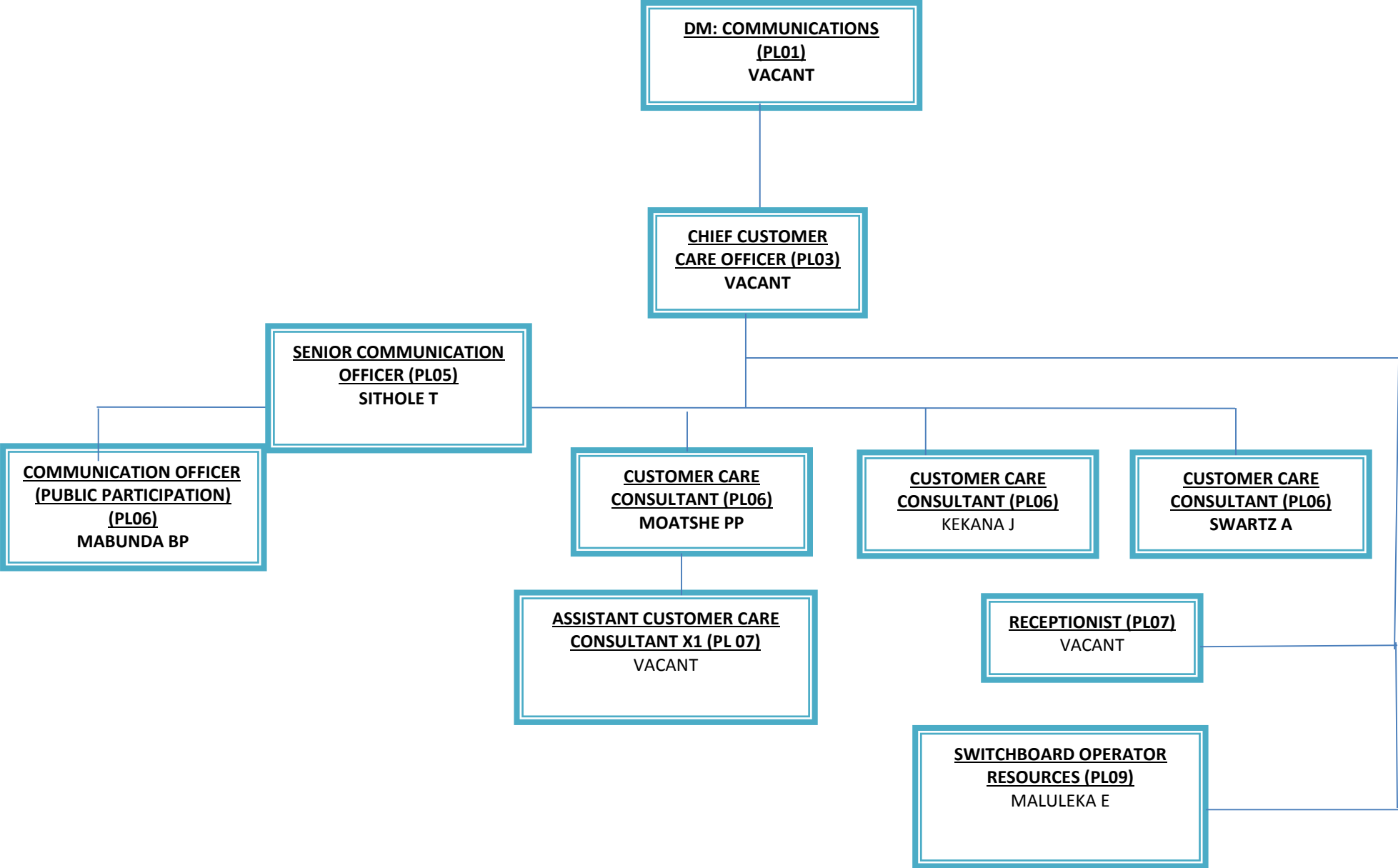
ORGANOGRAM- OFFICE OF THE MAYOR/CHIEF WHIP/SPEAKER



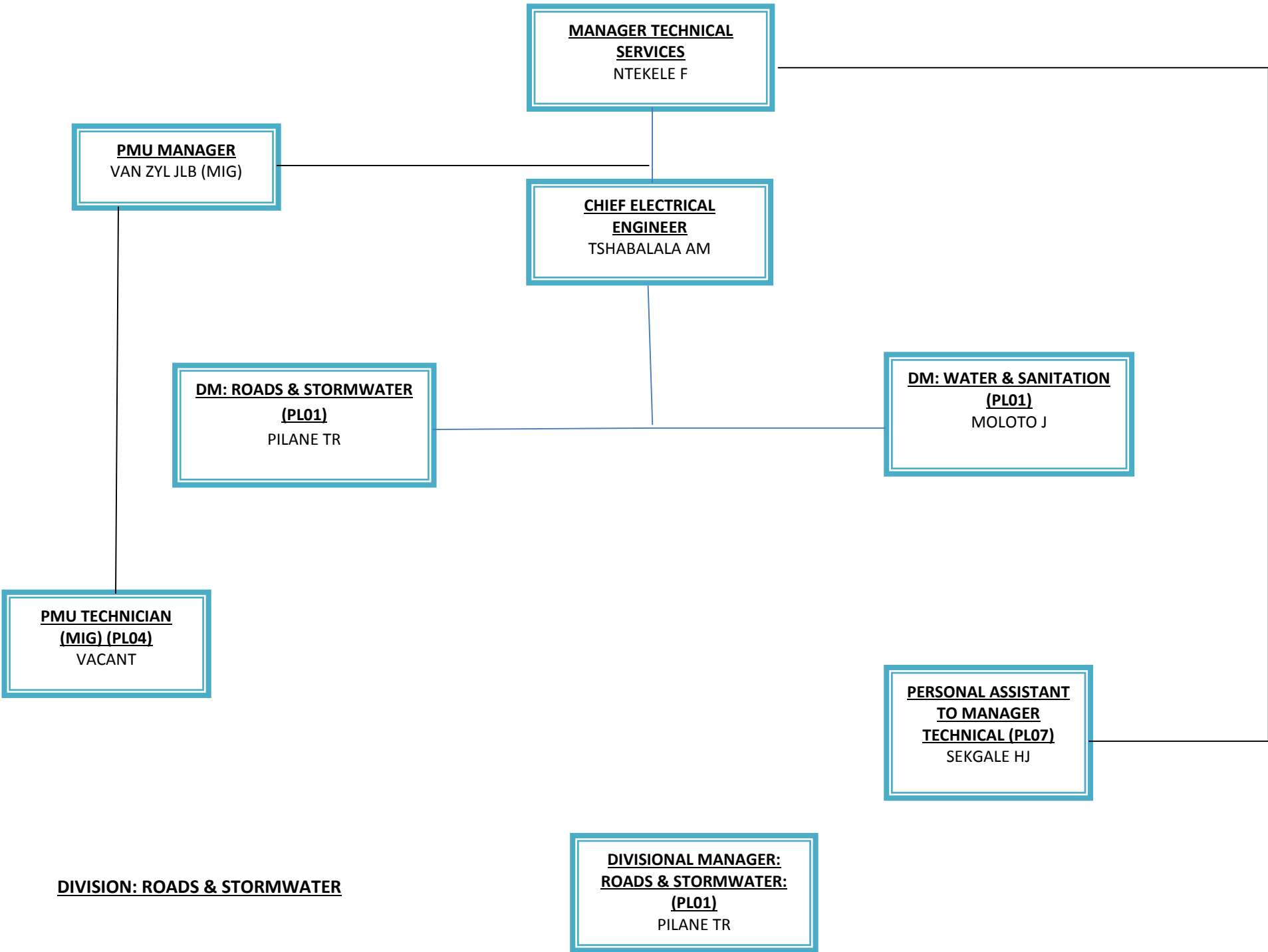
ORGANOGRAMS – MUNICIPAL MANAGER’S OFFICE DIVISION



ORGANOGRAM- COMMUNICATION DIVISION



ORGANOGRAMS – MANAGER TECHNICAL SERVICES



DIVISION: ROADS & STORMWATER

**SENIOR TECHNICIAN ROADS
& MAINTANCE (PL03)**
VACANT

**SUPERINTENDANT: ROADS
& STORMWATER: (PL05)**
MOTHOKWA TP

GRADER OPERATOR (PL08)
VACANT

**SUPERVISOR: ROADS
CONSTRUCTION (PL09)**
VACANT

**CONCRETE CUTTER
OPERATOR (PL13)**
VACANT

**GENERAL ASSISTANTS: ROADS CONSTRUCTION X10
(PL15)**

WALTERS EL	MNGUNI MN
MOLELE MT	MAHLANGU SS
SEKWAKWA K	MOLEFE MM
MAFIFI NA	MALOBA FO
KUBAYI G	PAHL B

**HEAVY DUTY VEHICLE
DRIVER X4(PL 10)**
MOSELANE MD
BALOYI PK
SELOANA MP
RAMODIPA MS

TIPPER DRIVERS X4 (PL10)
THELEDI P (VACANT)
BALOYI SP
SITHOLE RA
MOLAUDZI NH

WATERCART DRIVER (T05)
VACANT

BOMAG OPERATOR (T5)
VACANT

**MANAGER: WATER
& SANITATION (PL01)**
MOLOTO MJ

STOREMAN (PL09)
ASCHENDORF PM

**BUILDING MAINTENANCE
OFFICER (PL10)**
NEW PROPOSED

**BUILDING MAINTENANCE
SKILLED WORKSMAN**
X2(PL13)
VACANT

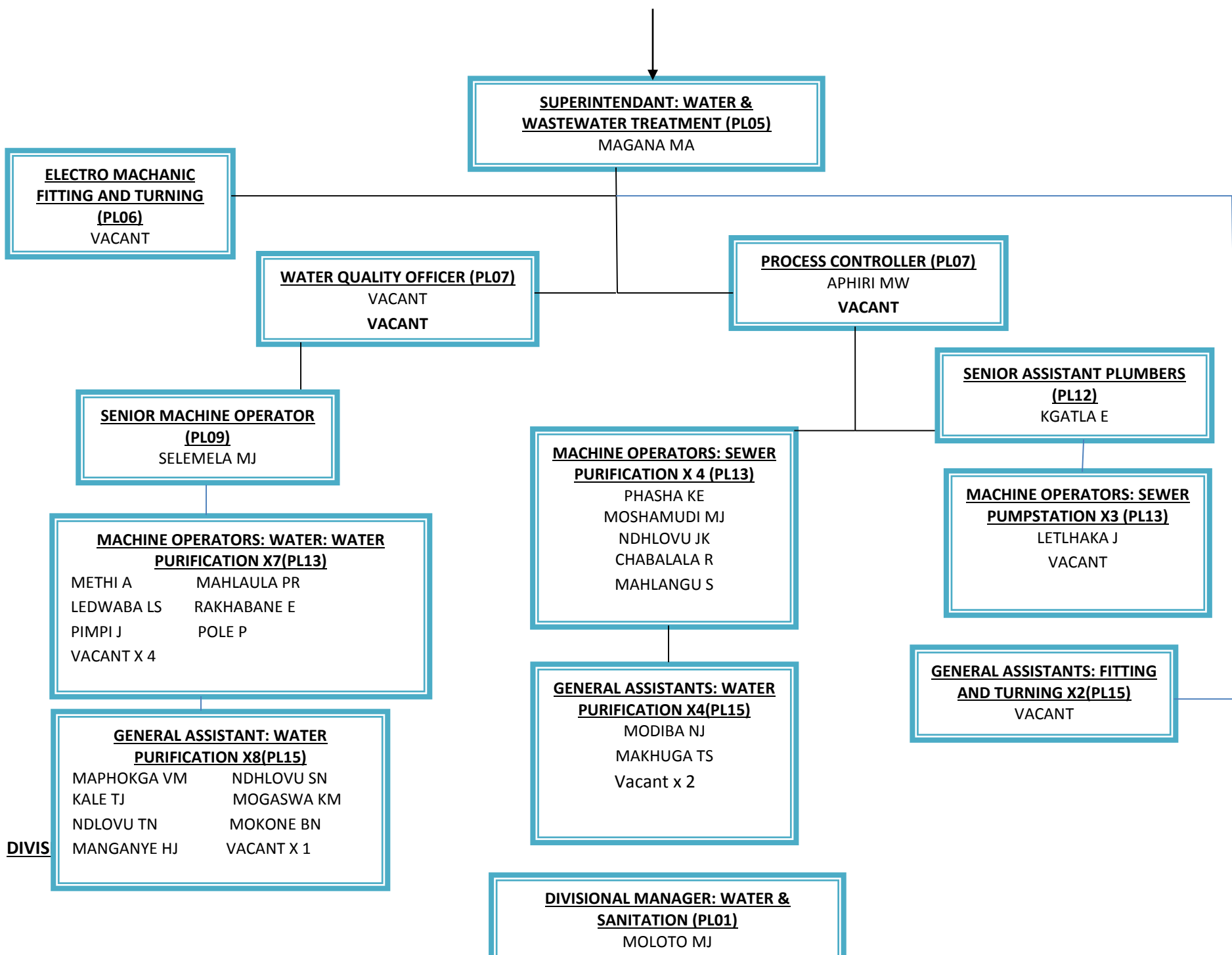
**SUPERVISOR: STORMWATER
MAINTENANCE (PL 09)**
VACANT

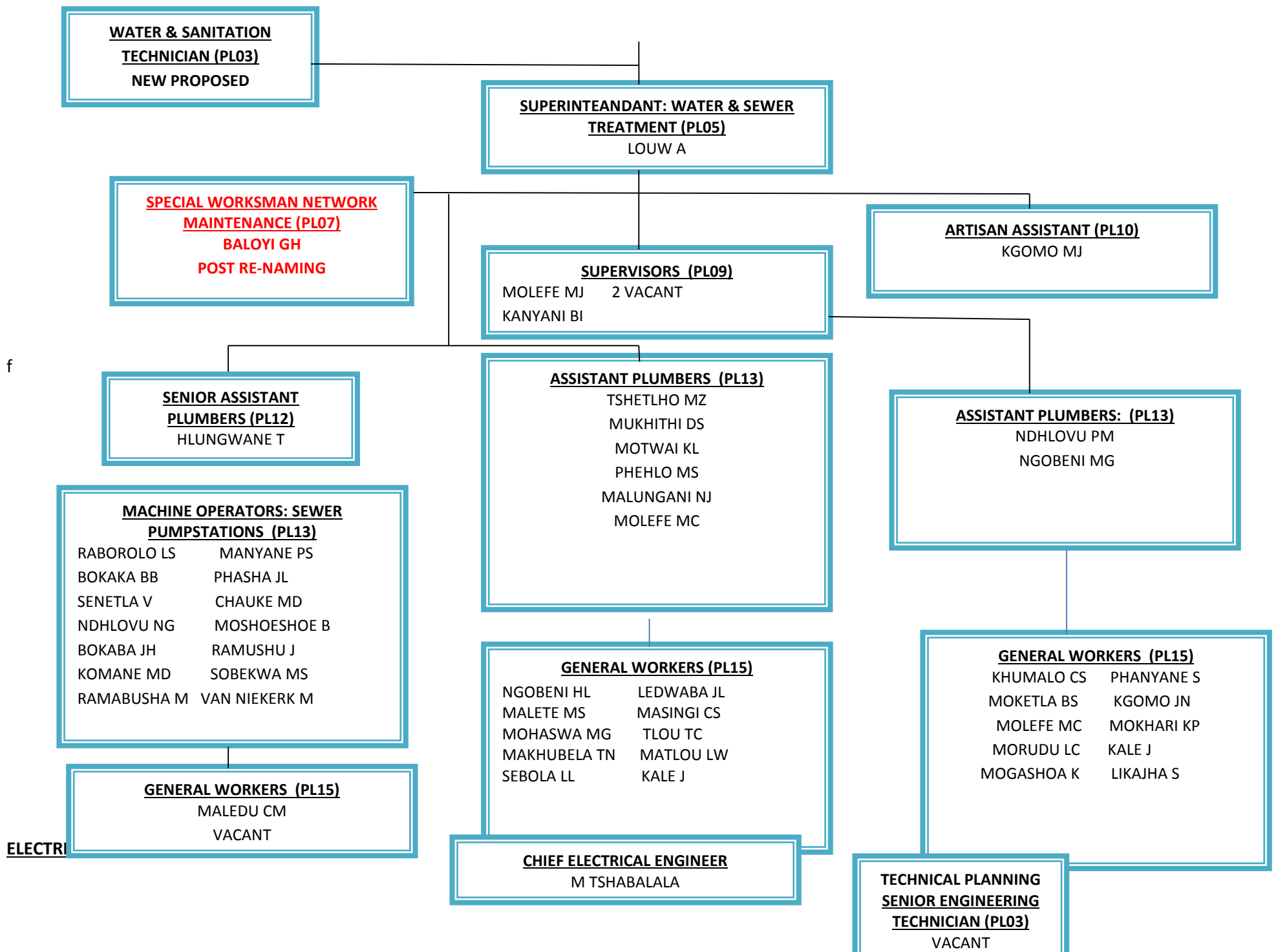
**BUILDER/BRICK LAYER
(PL 13)**
VACANT X2

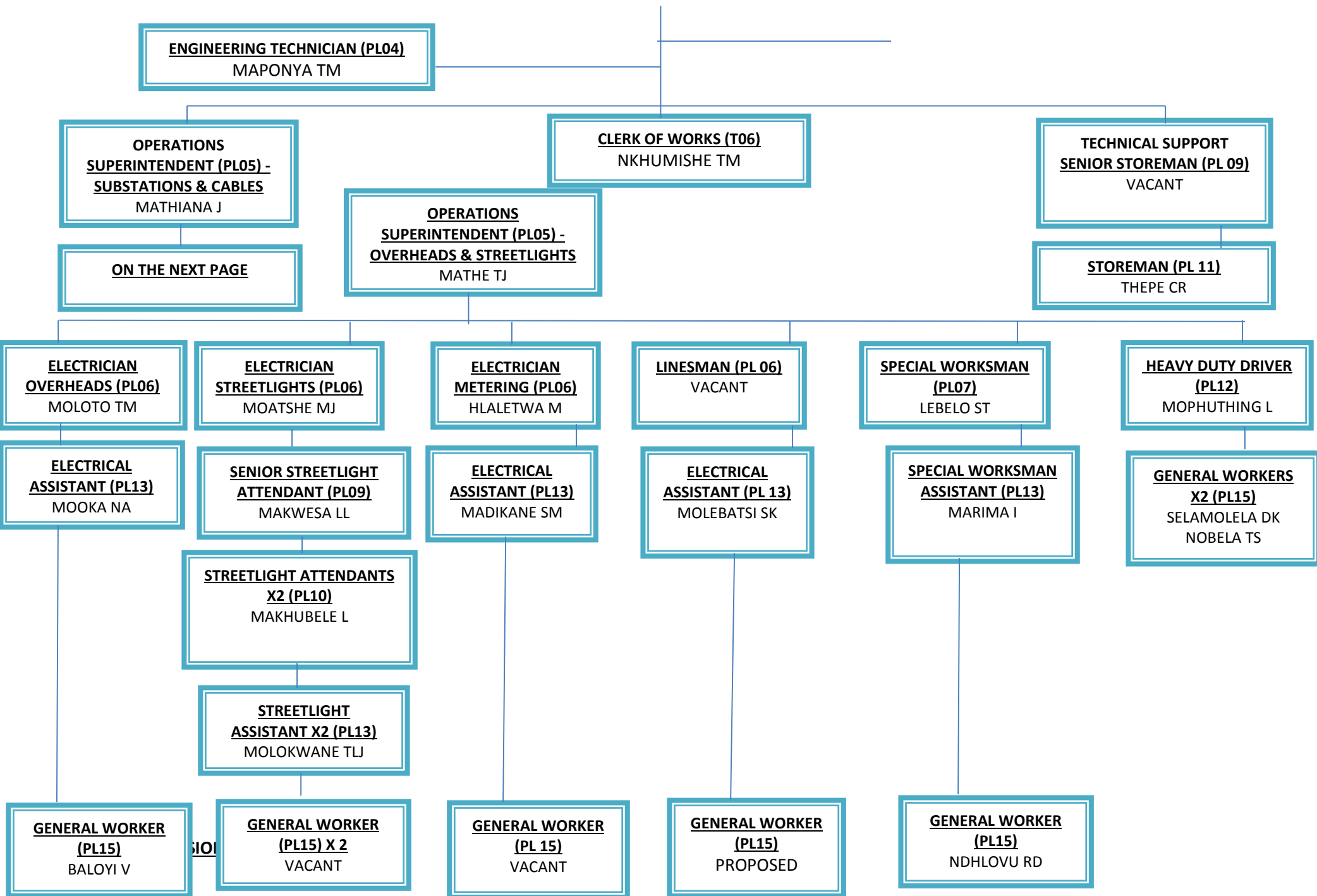
**GENERAL ASSISTANTS: STORMAWATER
MAINTENANCE X11 (PL15)**

SEKGAOLELO SM	MAIMELA D
MHLANGA JJ	MALEBYE K
SEPHEI D	MOOKA RB
NOBELA M	SEMETSENG TB
MOTALANE ME	

NEW PROPOSED X6







OPERATIONS
SUPERINTENDENT (PL05) -
SUBSTATIONS & CABLES
MATHIANA J

ELECTRICIANS
Substations (PL06)
NEMAKHAVHANI KZ

ELECTRICIANS
CABLES (PL06)

ELECTRICIAN
METERING (PL06)
HLELETHWA M

CABLE JOINTER
(PL06)
SEEMA LJ

SPECIAL WORKSMAN
X2 (PL07)
NKUNA MH
MOATSHE JM

HEAVY DUTY VEHICLE
DRIVER (PL12)
VACANT

ELECTRICAL
ASSISTANT (PL13)
VACANT

ELECTRICAL
ASSISTANT (PL13)
VACANT

ELECTRICAL
ASSISTANT (PL13)
VACANT

CABLE JOINTER
ASSISTANT X2 (PL13)
MAKHUBELA HA
VACANT

SPECIAL WORKSMAN
ASSISTANT X2 (PL15)
BALOYI MH
KHOZA PN

GENERAL WORKER
(PL15)
LUVHENGU MJ

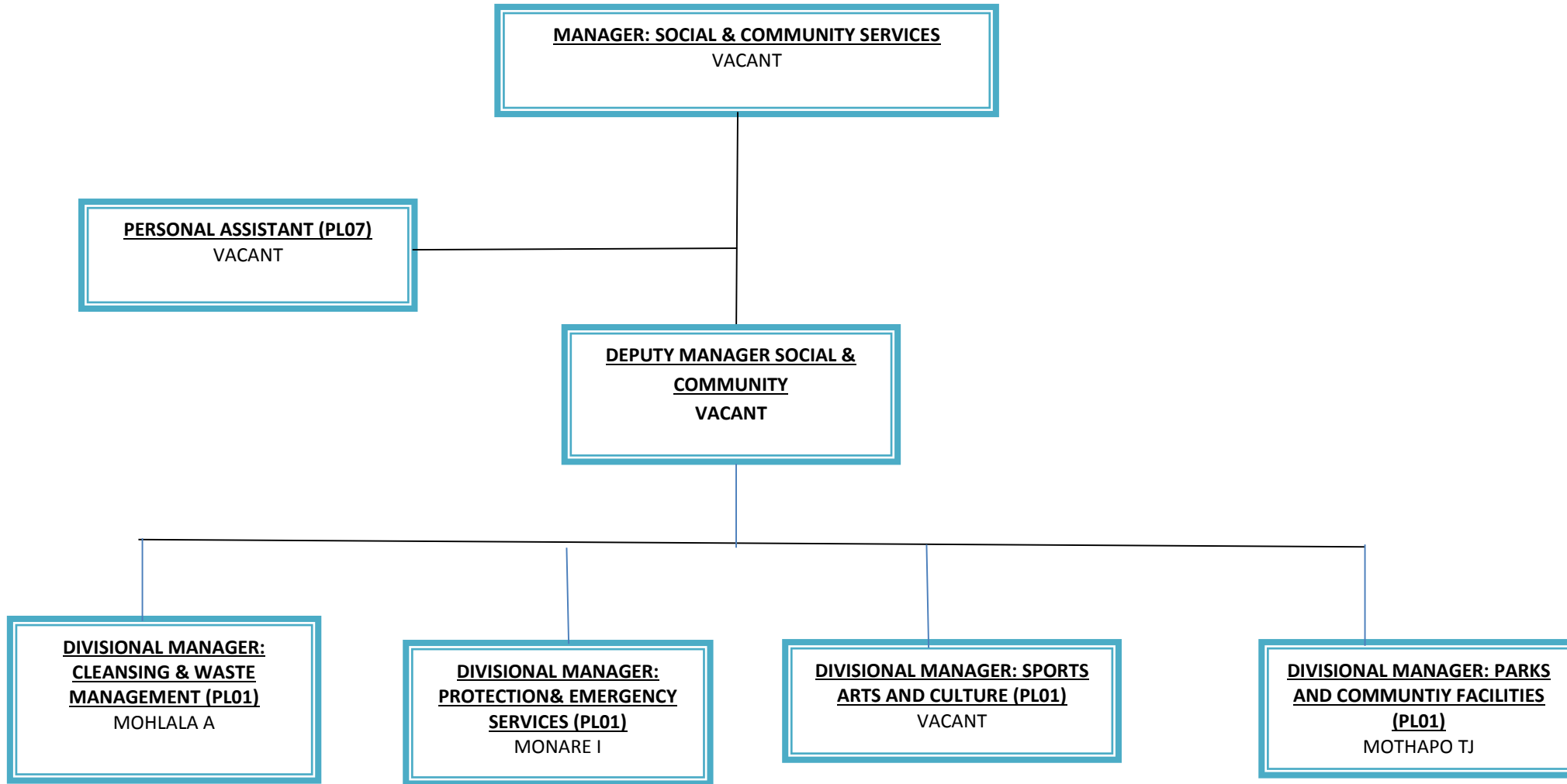
GENERAL WORKER
(PL15)
VACANT

GENERAL WORKER
(PL15)
MAKGOKA JM

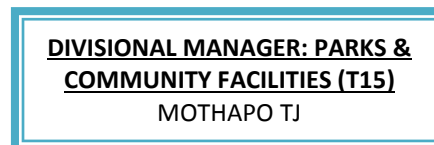
GENERAL
WORKER (PL15)
SEOKETSA PS

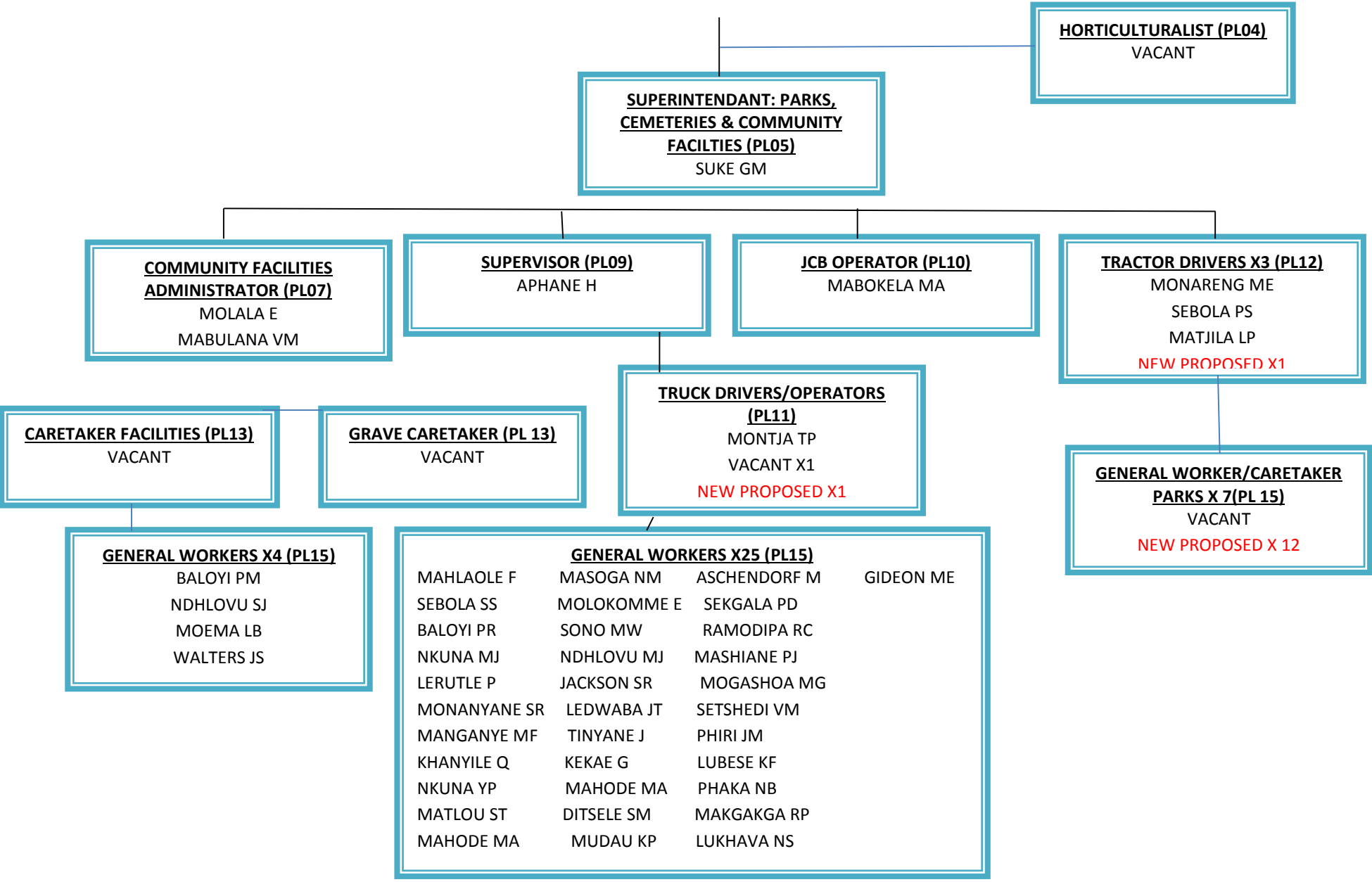
GENERAL WORKER X2
(PL15)
MPETE E
MOTAU SJ

GENERAL WORKER X2
(PL15)
MAKHETHI MM
MAKOBELA LS



DIVISION: PARKS & CEMETERIES





DIVISION: SPORTS ARTS AND CULTURE

**DIVISIONAL MANAGER: SPORTS ARTS AND
CULTURE (PL01)**
VACANT

SENIOR LIBRARIAN (PL04)
VACANT X2

LIBRARIAN (PL06)
RADITLA N

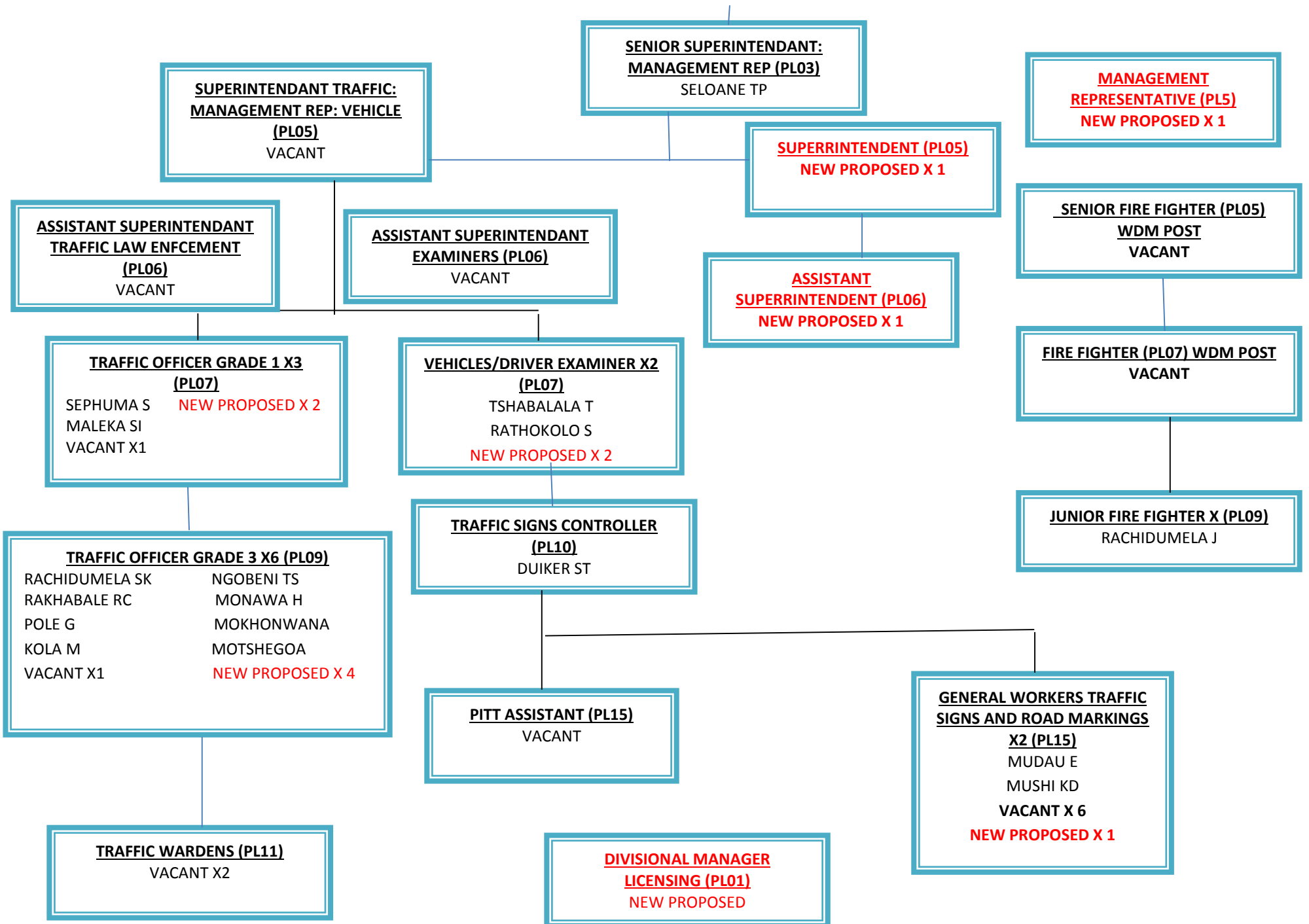
**SPORTS ARTS AND CULTURE
CORDINATOR (PL06)**
RABOROLO DT

ASSISTANT LIBRIARIAN (PL09)
MALETE YMS

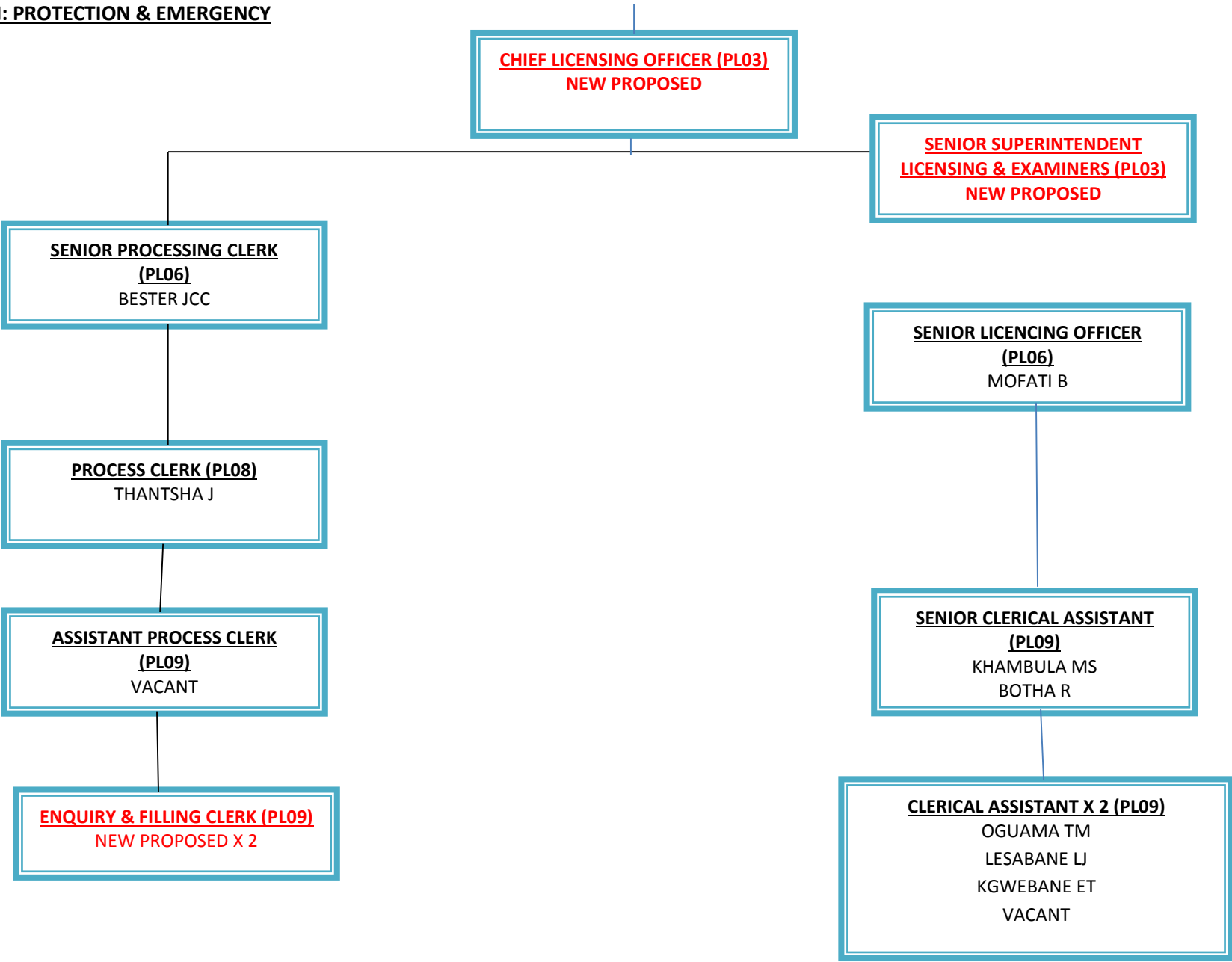
LIBRARY ASSISTANT (PL10)
CHABALALA MF

DIVISION: PROTECTION & EMERGENCY SERVICES

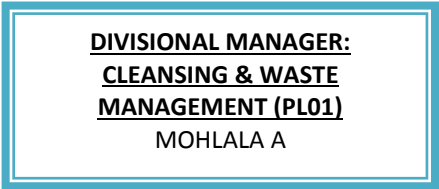
**DIVISIONAL MANAGER:
PROTECTION & EMERGENCY
SERVICES (PL01)**
MONARE I

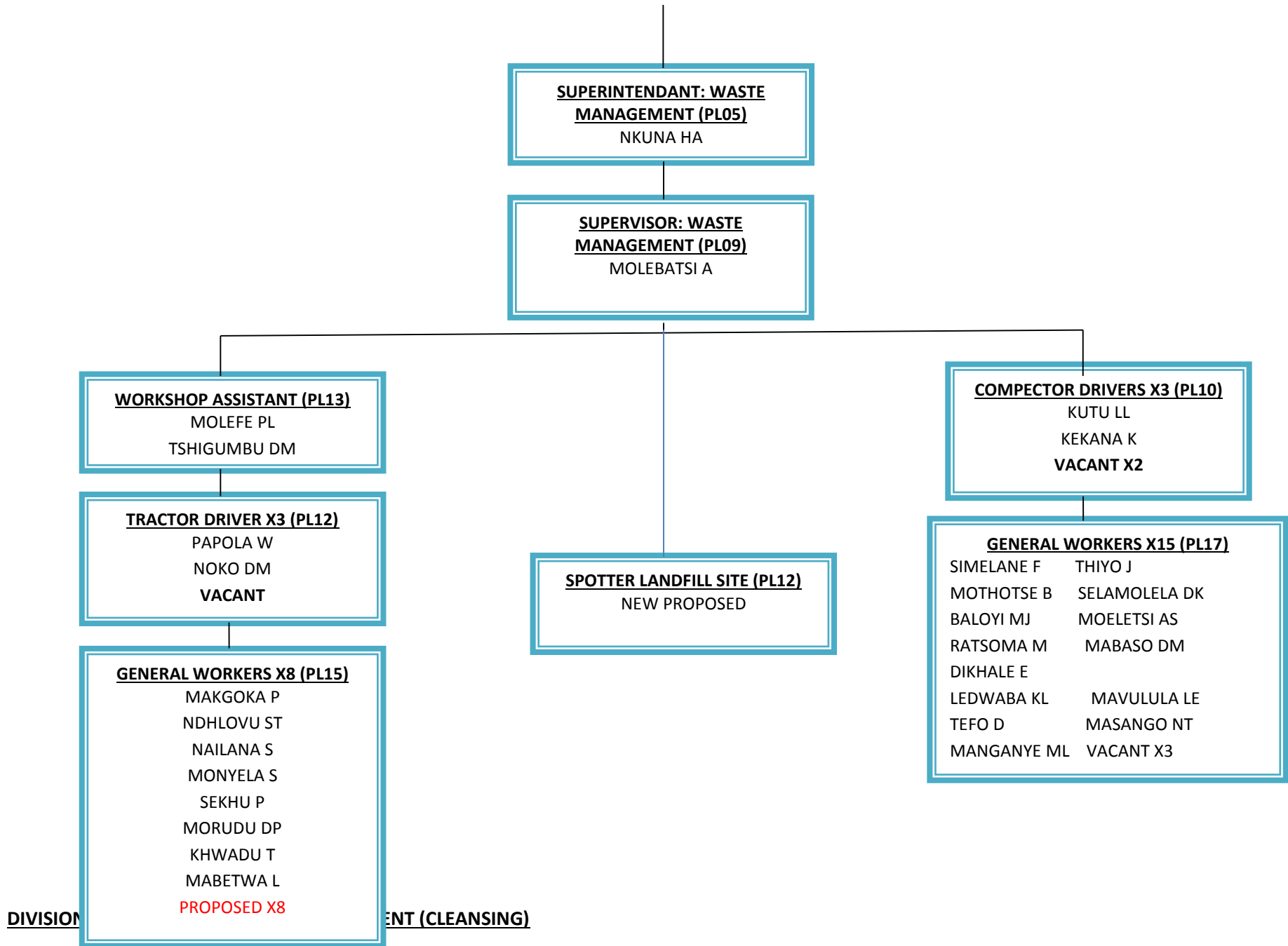


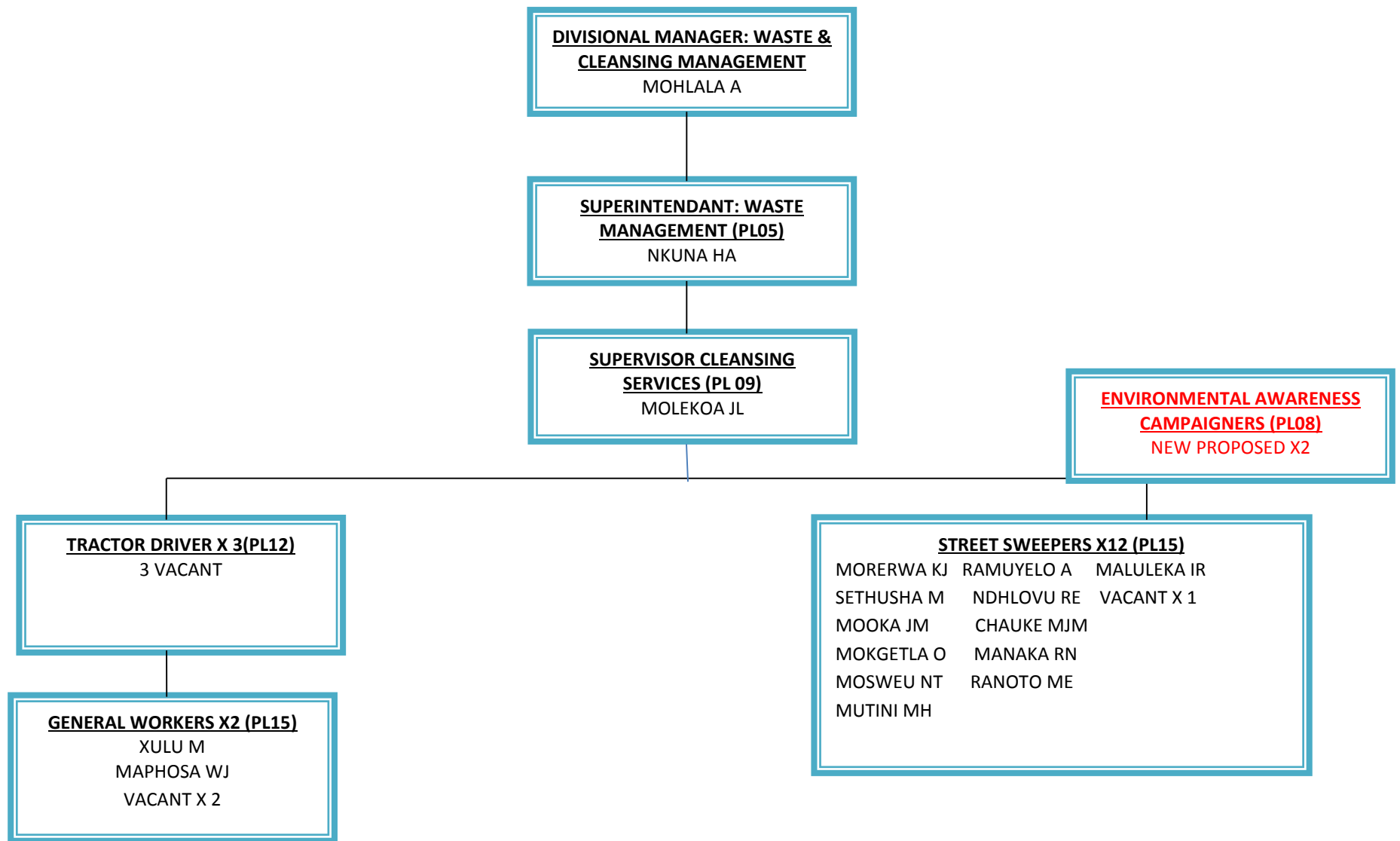
DIVISION: PROTECTION & EMERGENCY



DIVISION: CLEANISNG & WASTE MANAGEMENT

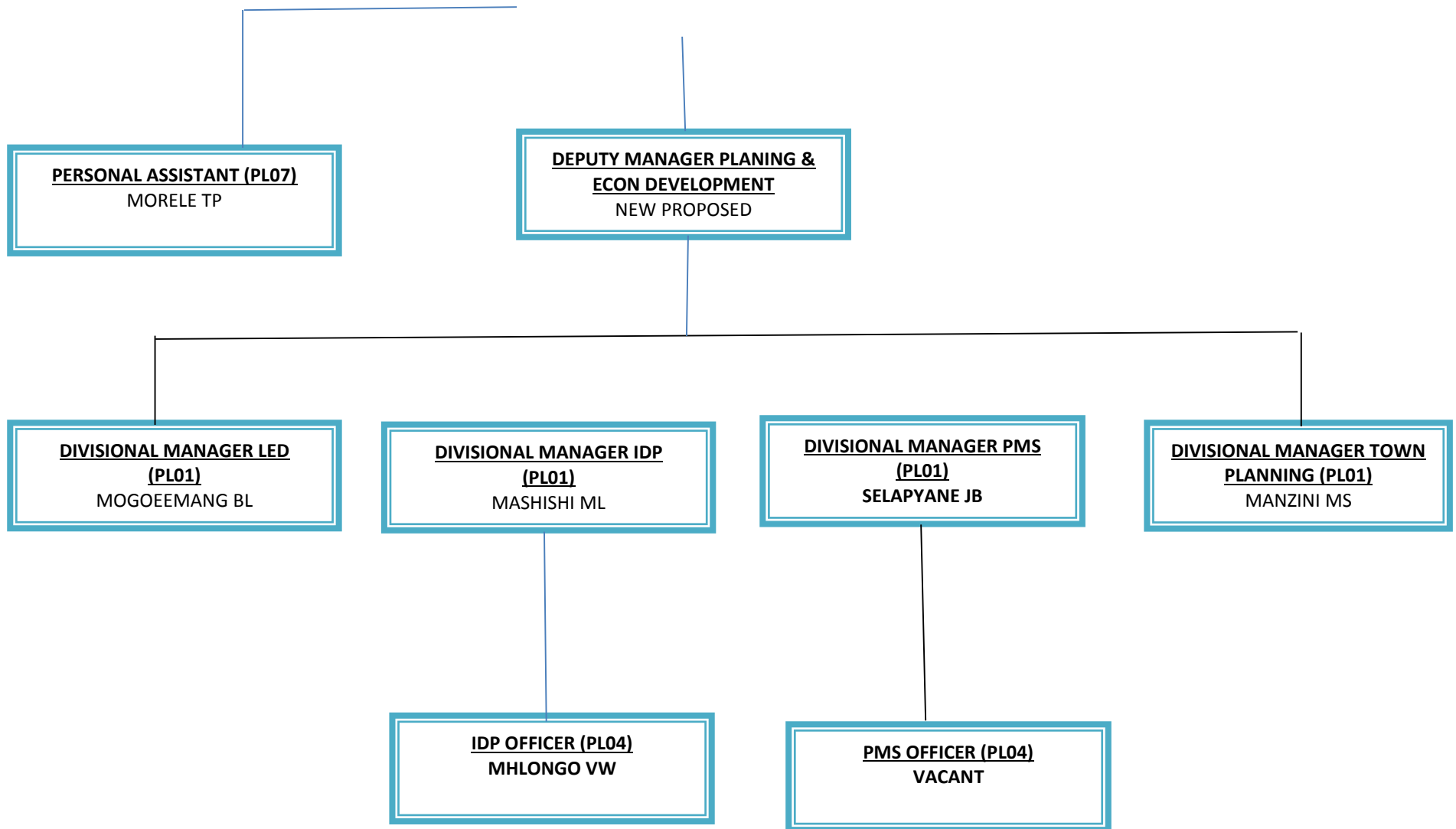




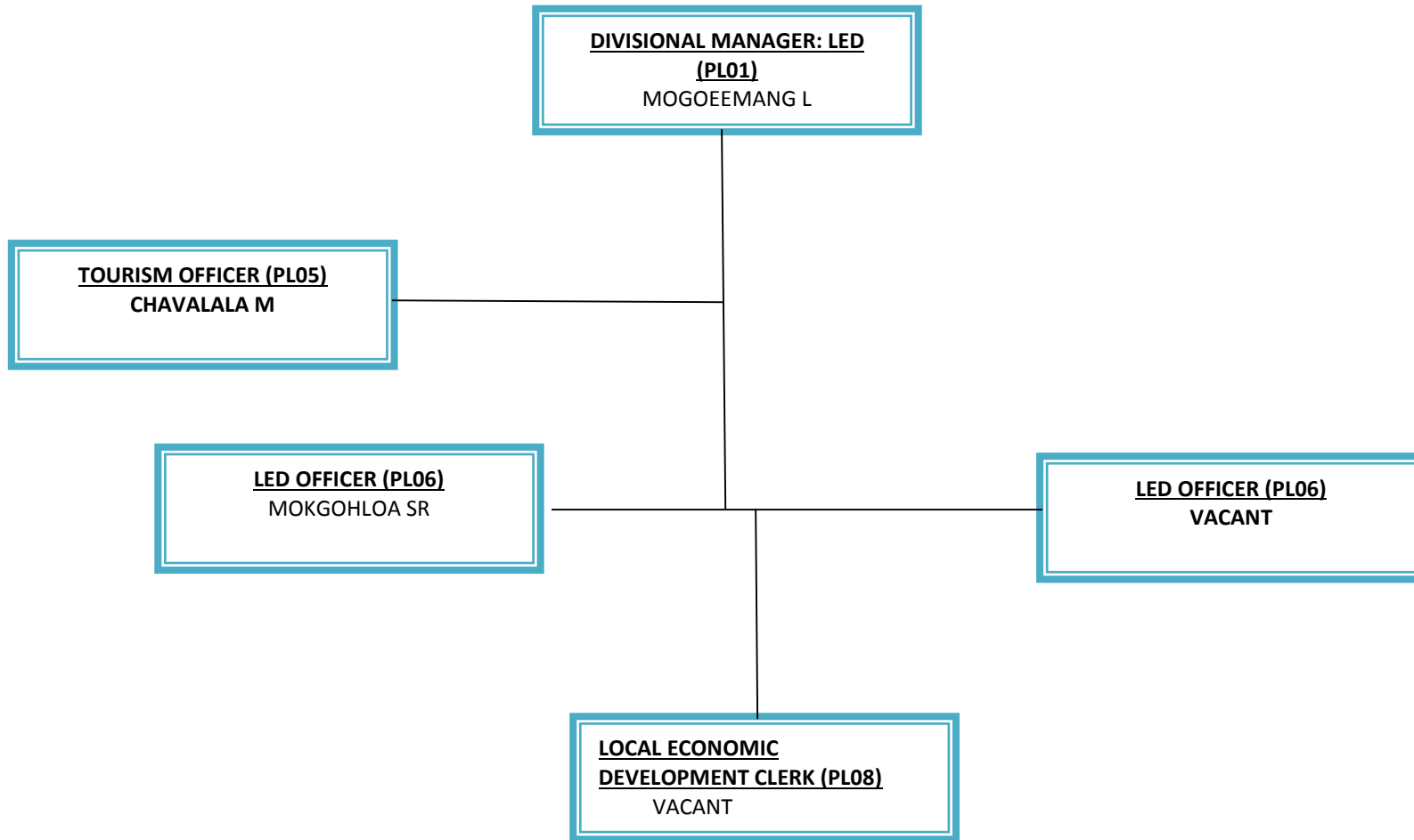


DIVISION: PLANNING & ECONOMIC DEVELOPMENT

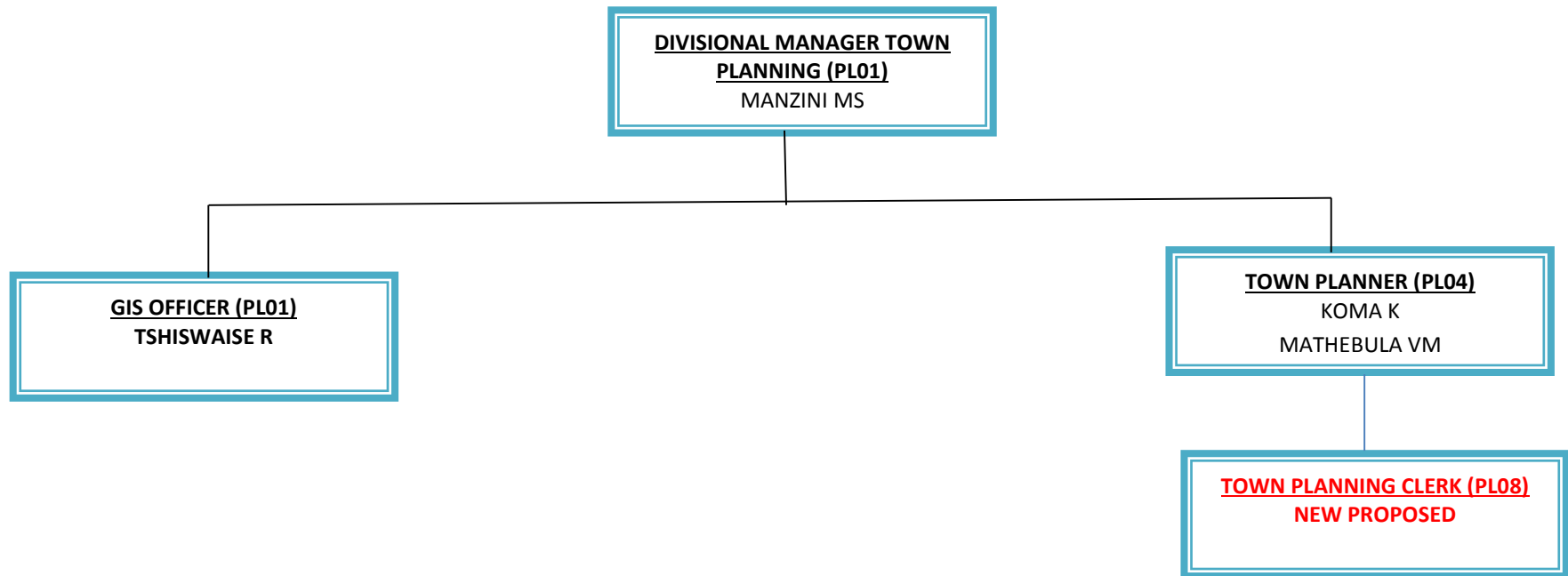




DIVISION: LOCAL ECONOMIC DEVELOPMENT

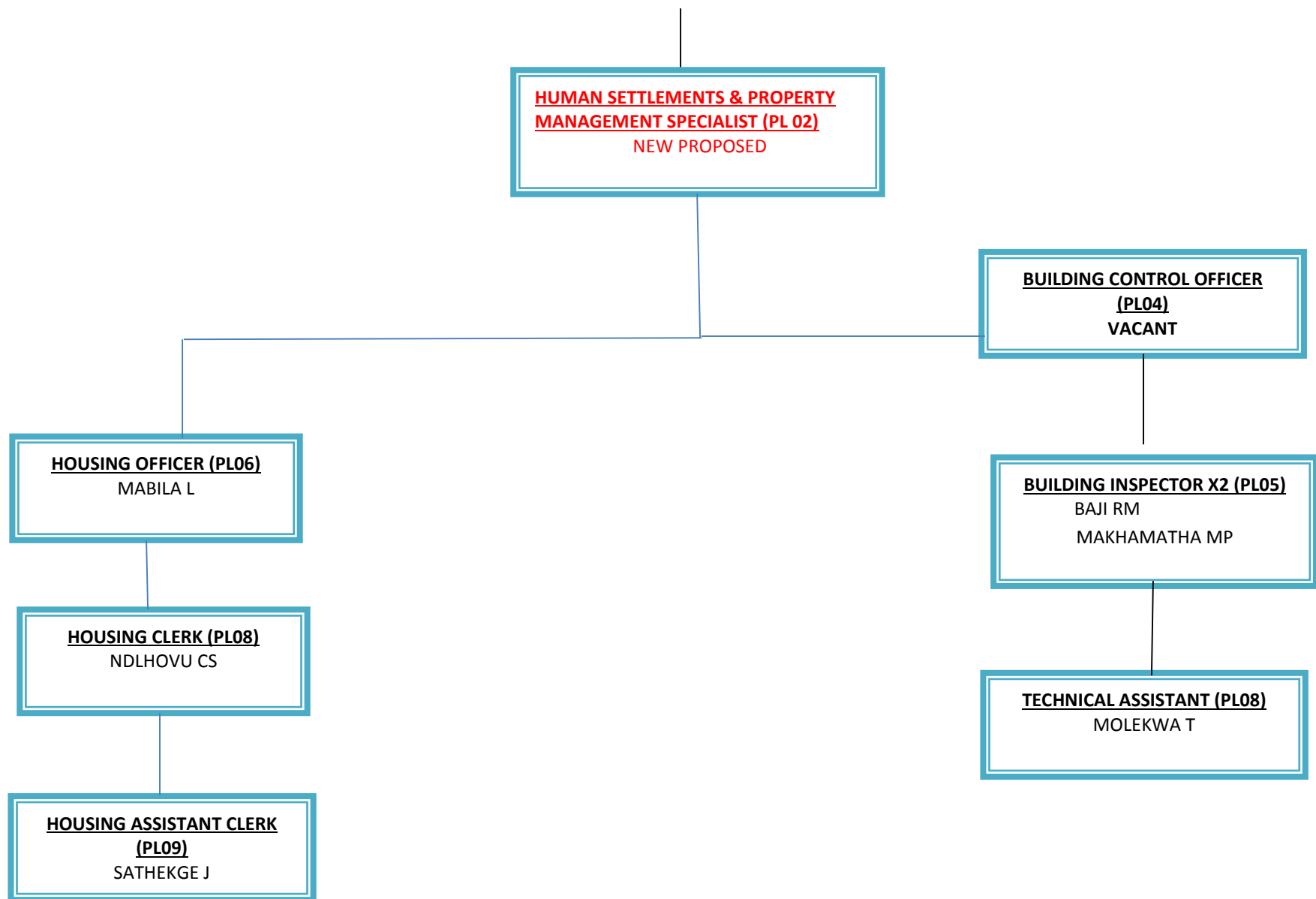


DIVISION: TOWN PLANNING

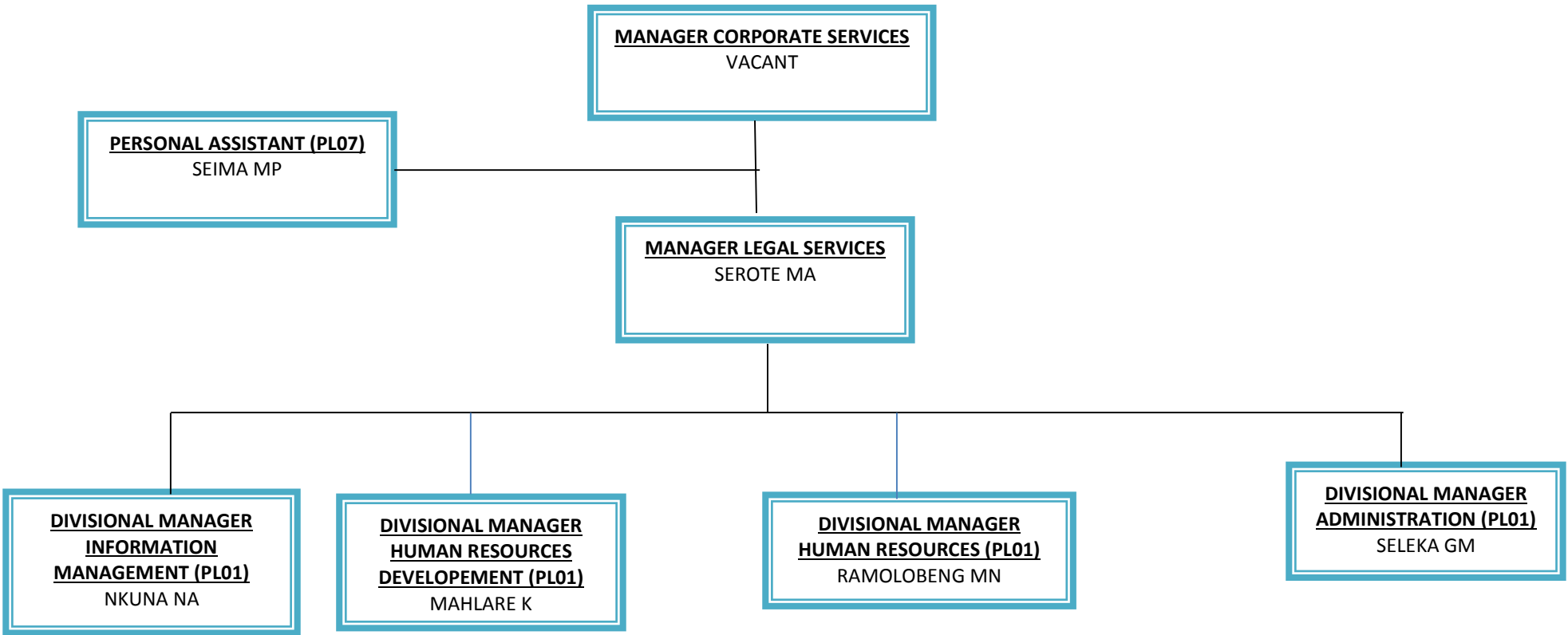


DIVISION: LAND & BUILDING

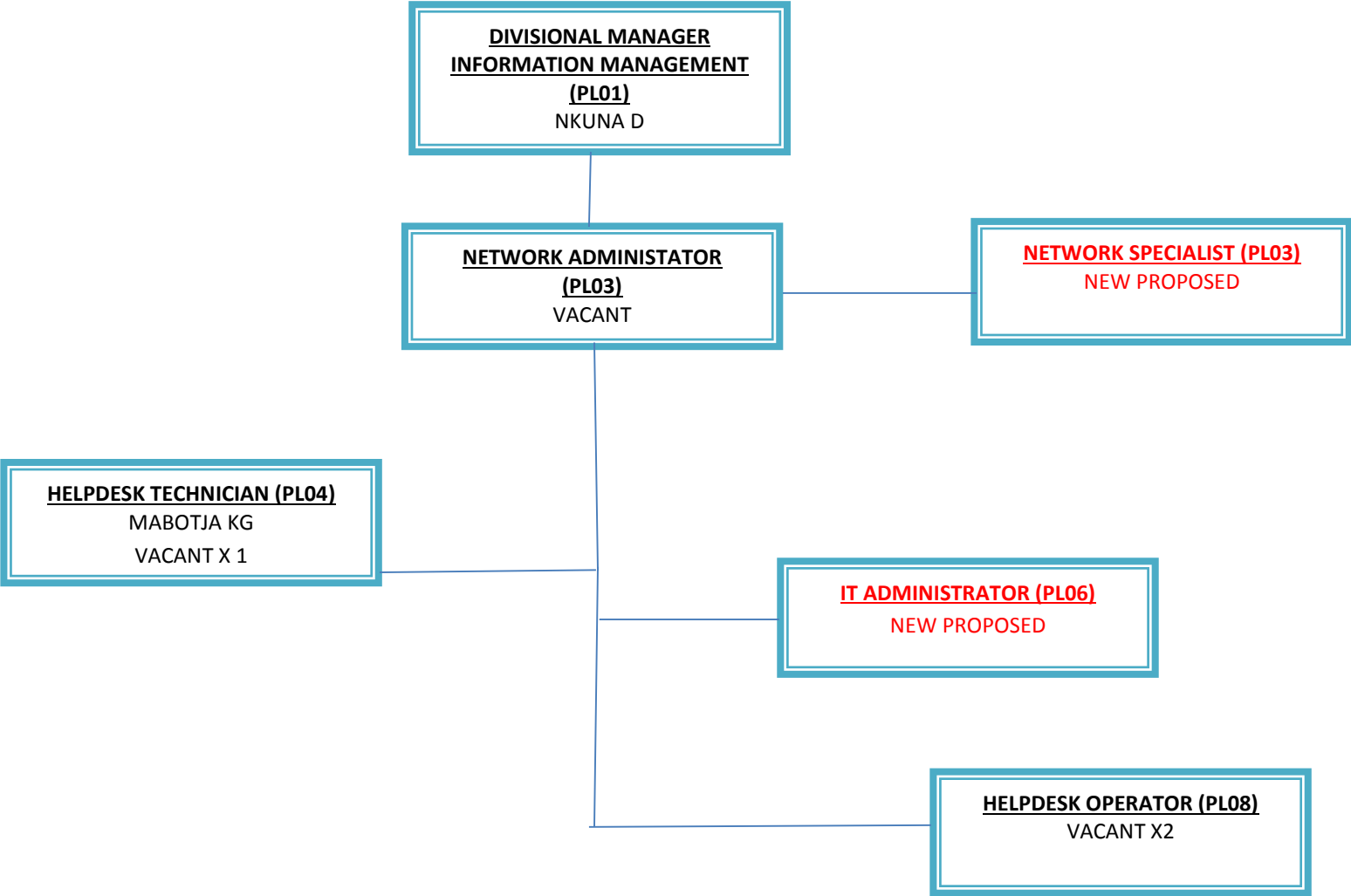




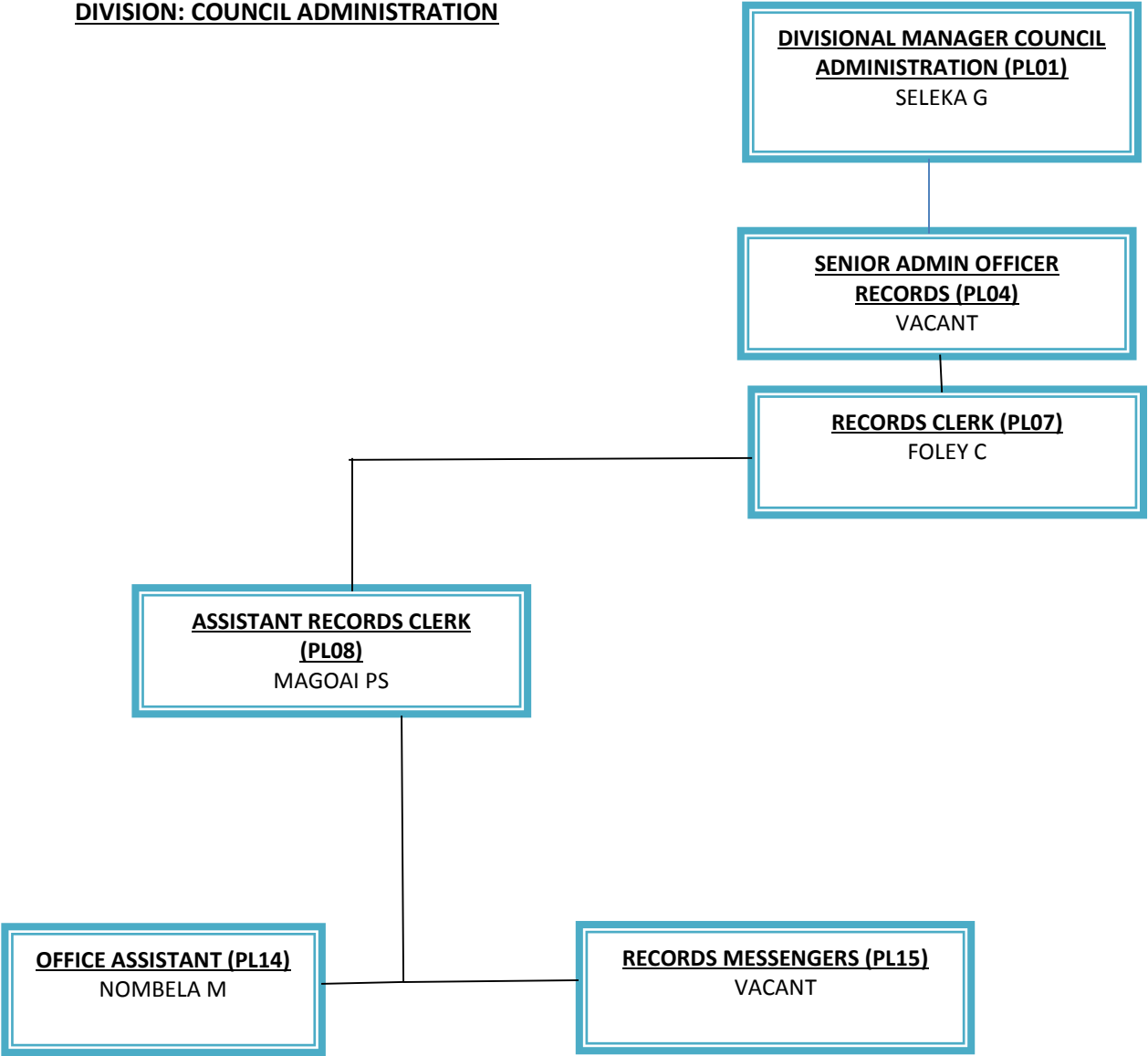
DEPARTMENT: CORPORATE SERVICES



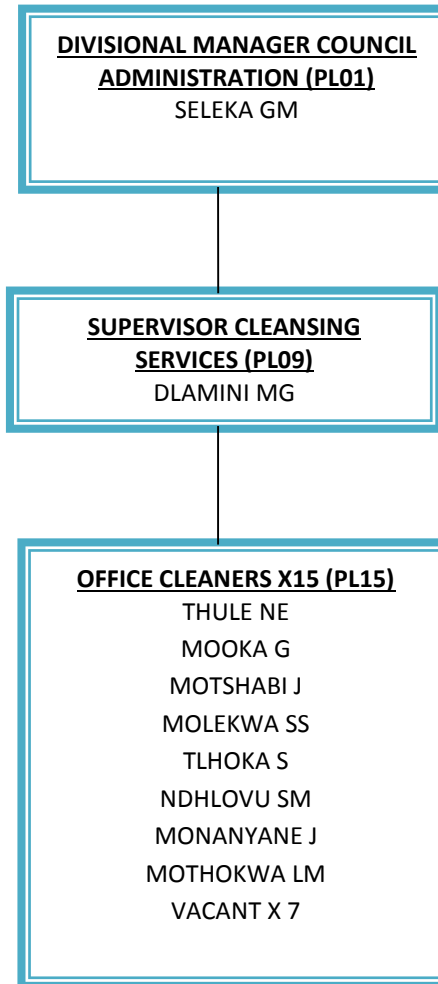
INFROMATION TECHNOLOGY DIVISION



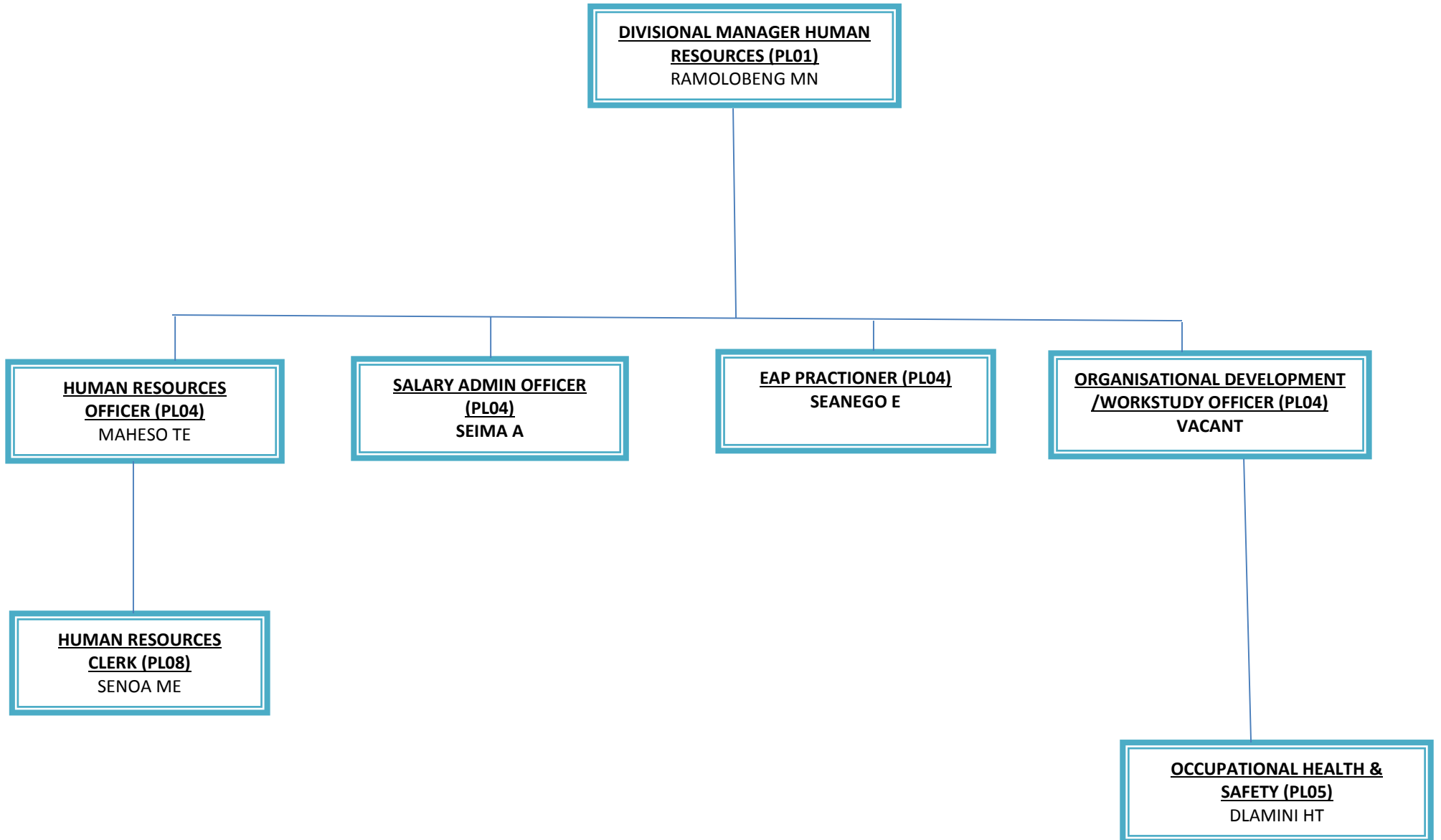
DIVISION: COUNCIL ADMINISTRATION



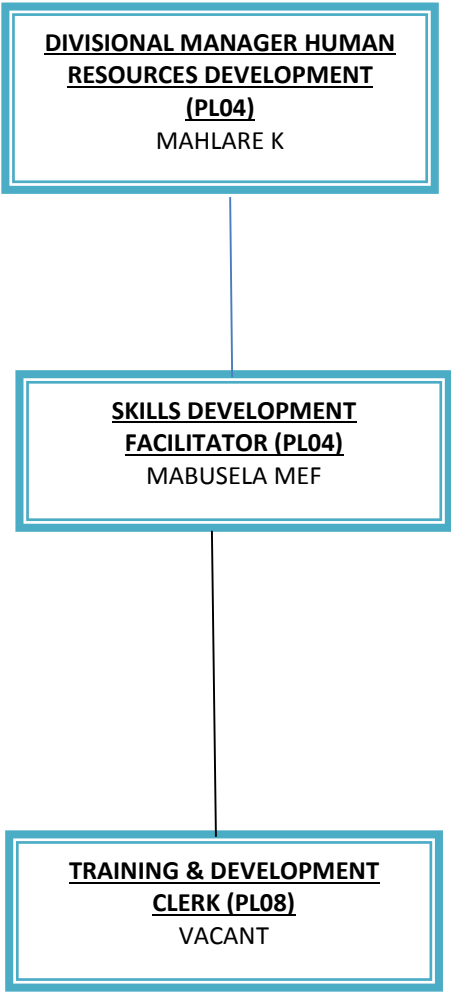
DIVISION COUNCIL ADMINISTRATION (CONTINUED)



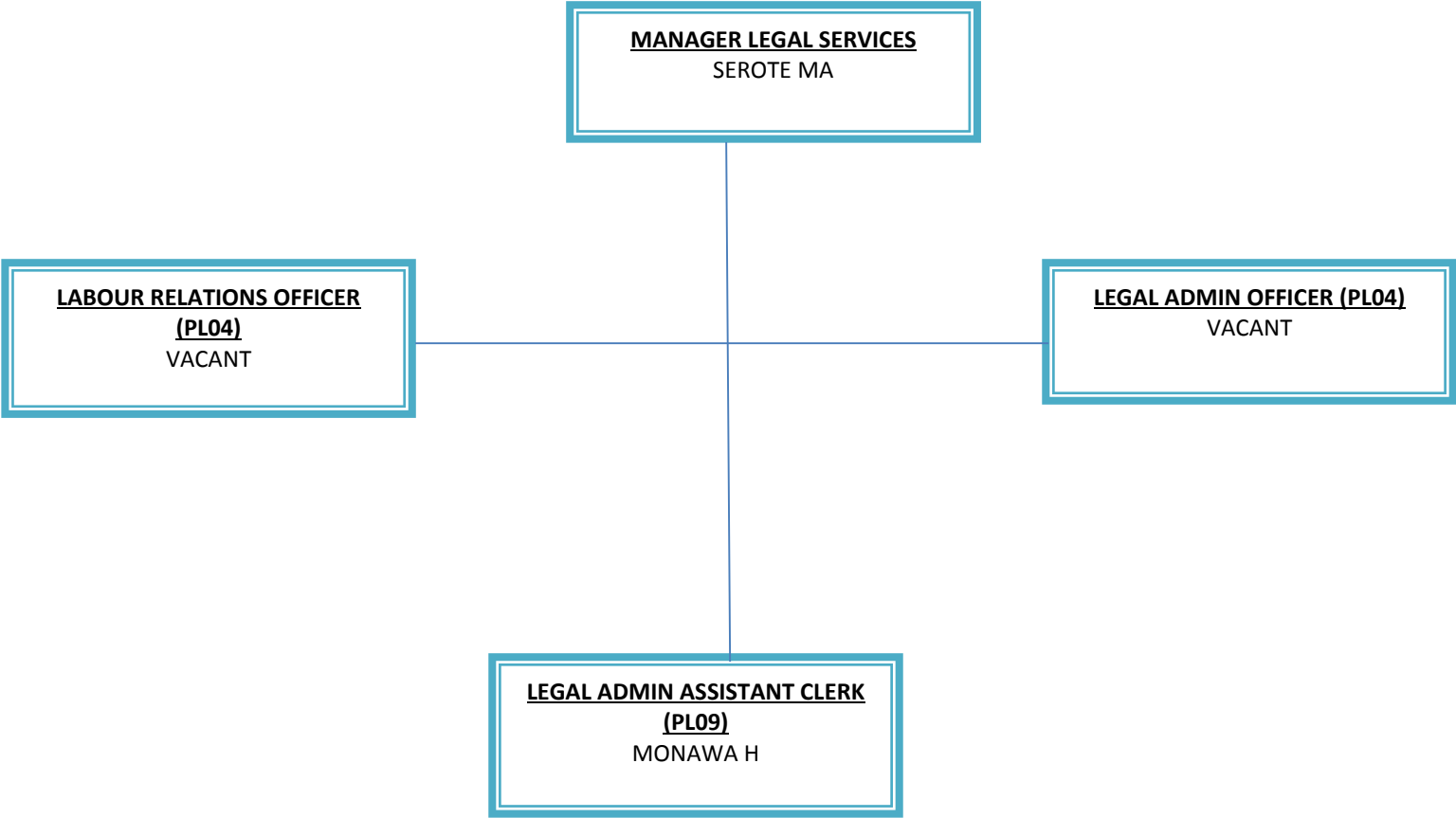
DIVISION: HUMAN RESOURCES



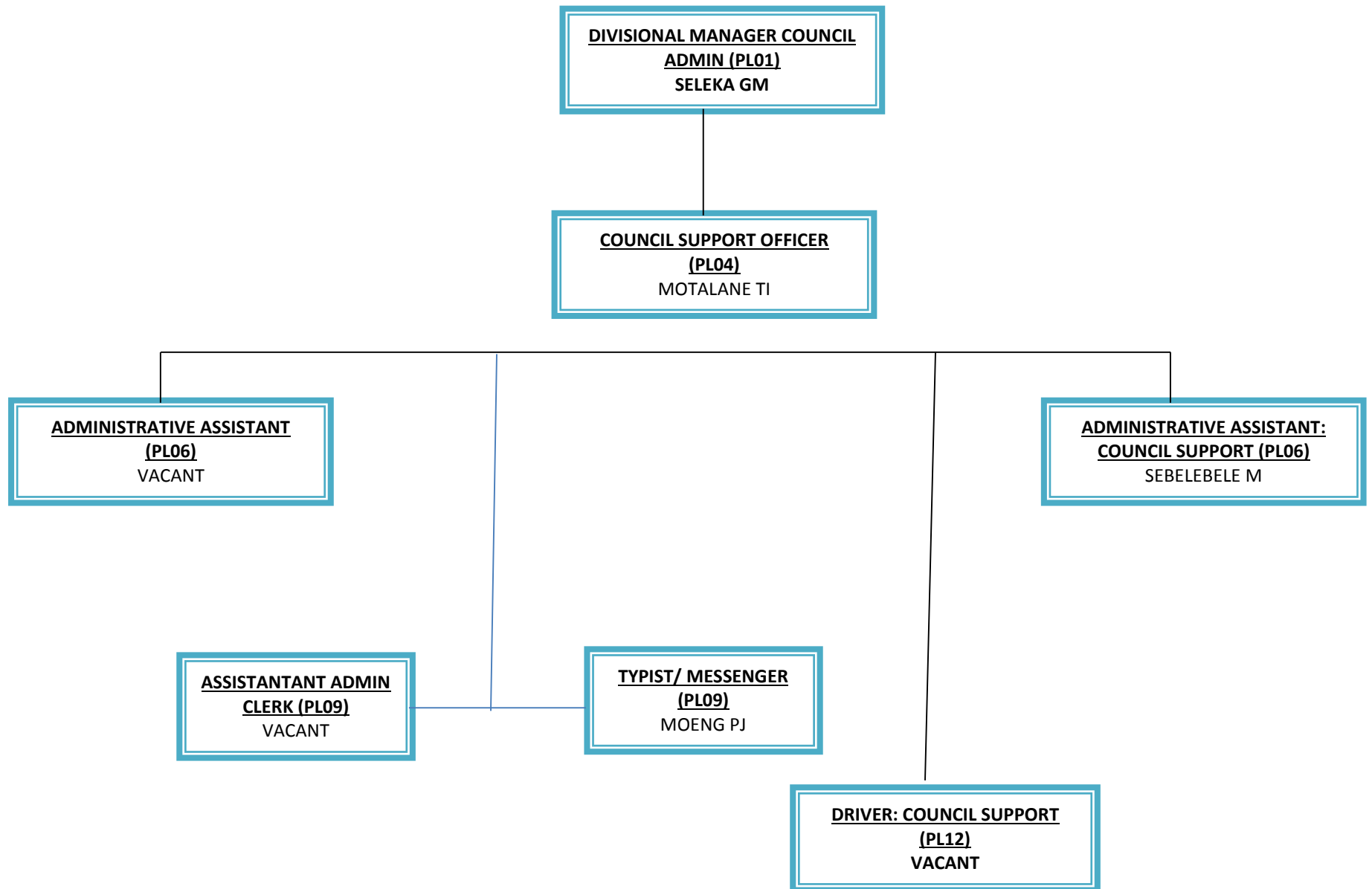
DIVISION: HUMAN RESOURCES DEVELOPMENT



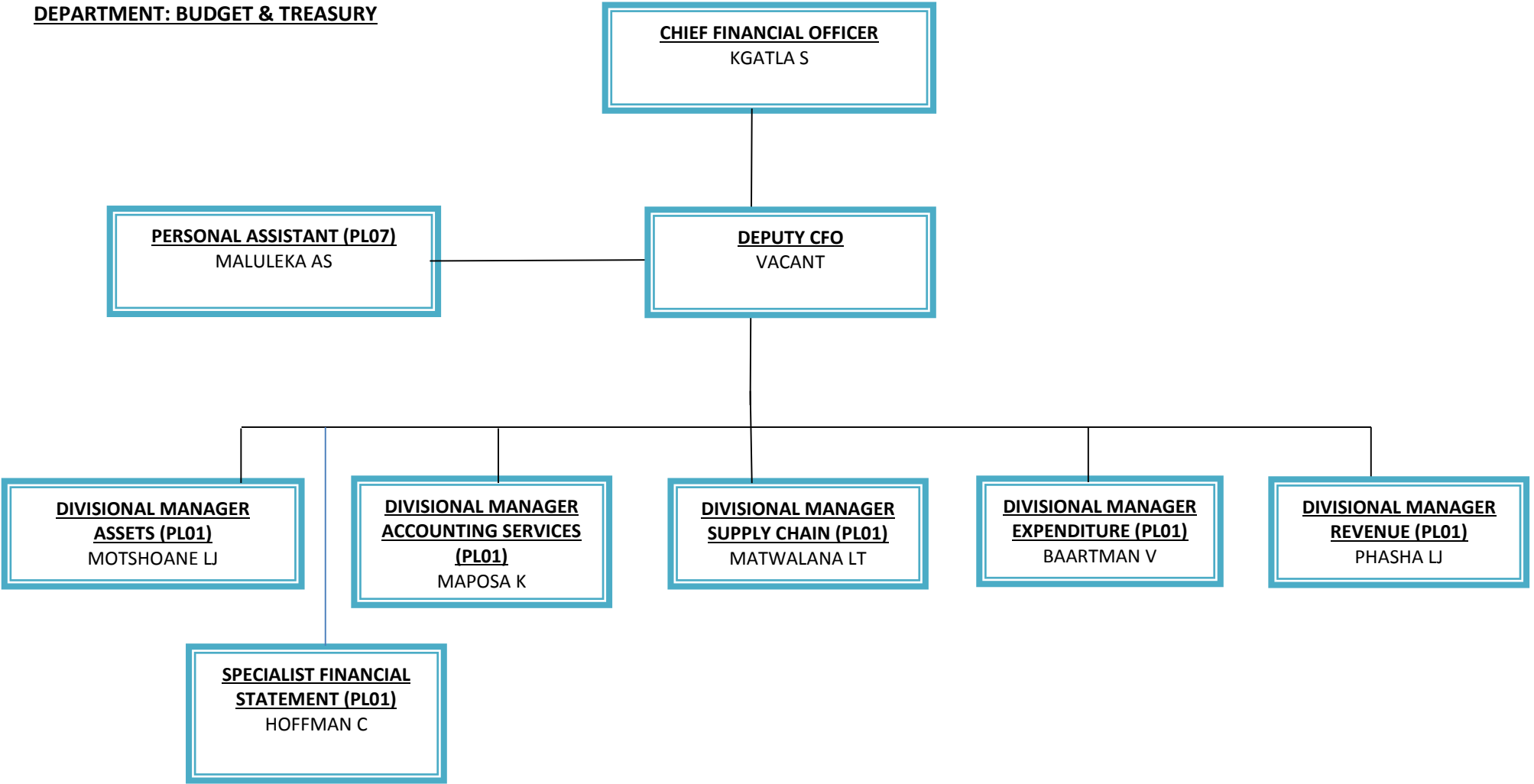
DIVISION: LEGAL SERVICES



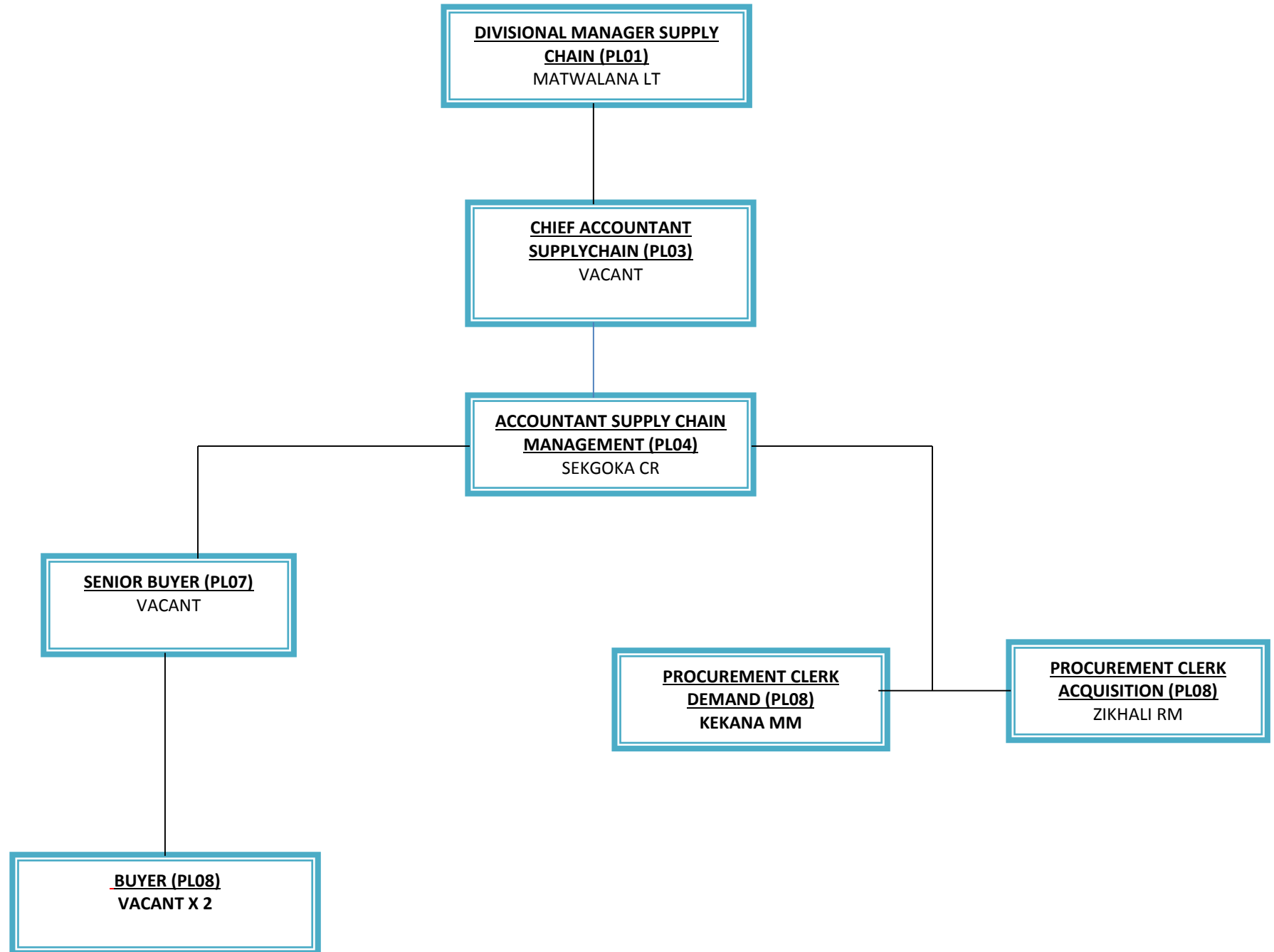
DIVISION: COUNCIL ADMIN



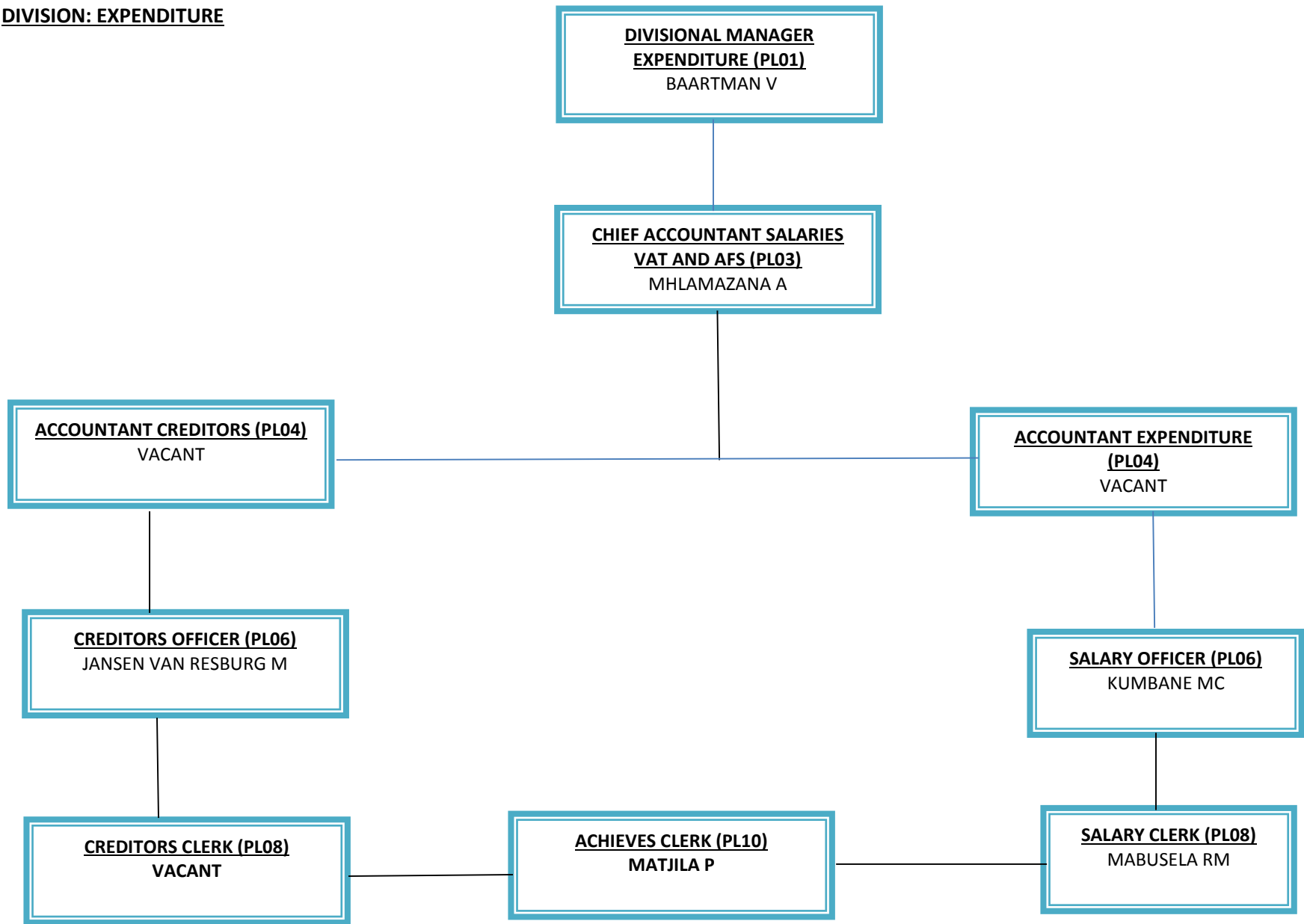
DEPARTMENT: BUDGET & TREASURY



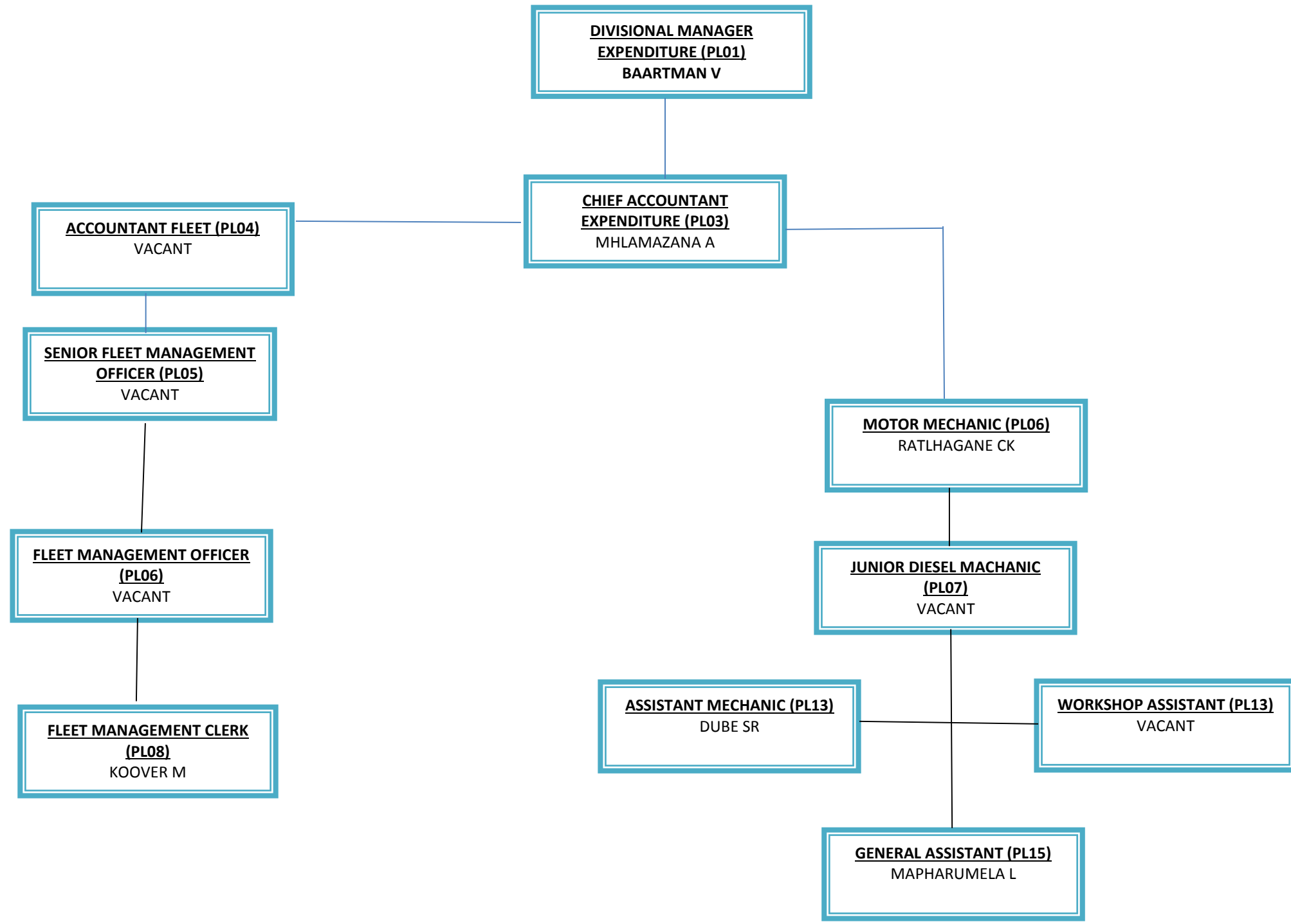
DIVISION: SUPPLY CHAIN



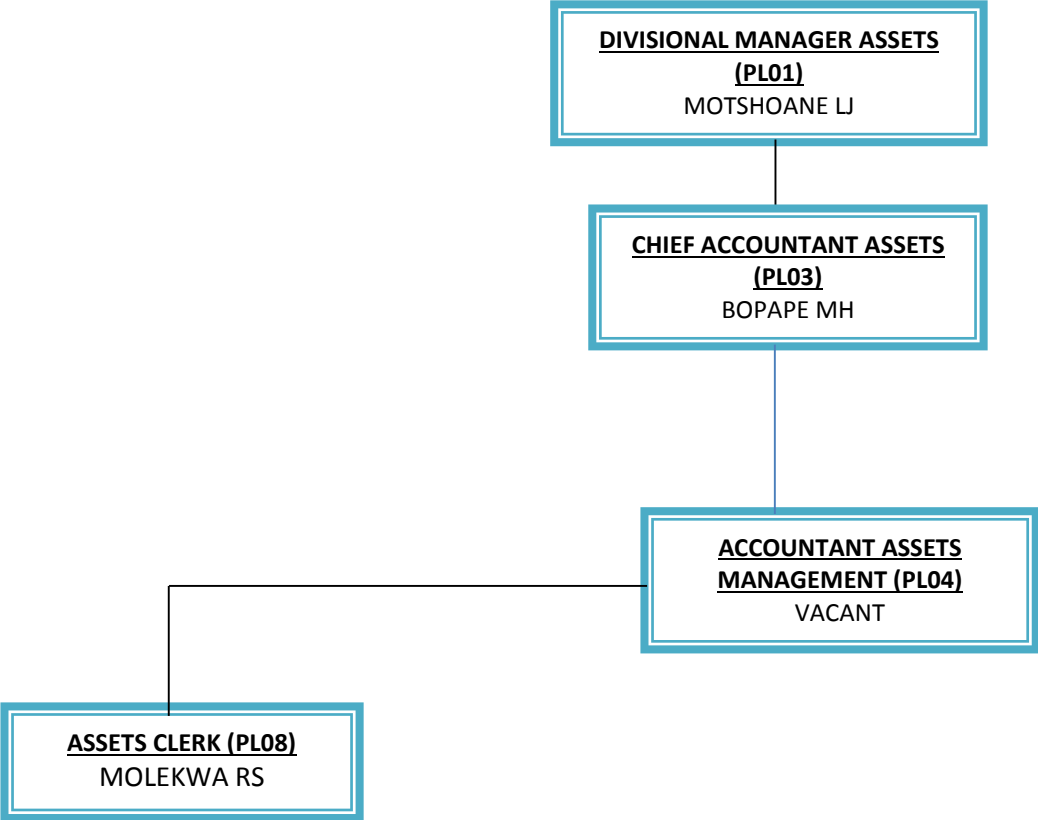
DIVISION: EXPENDITURE



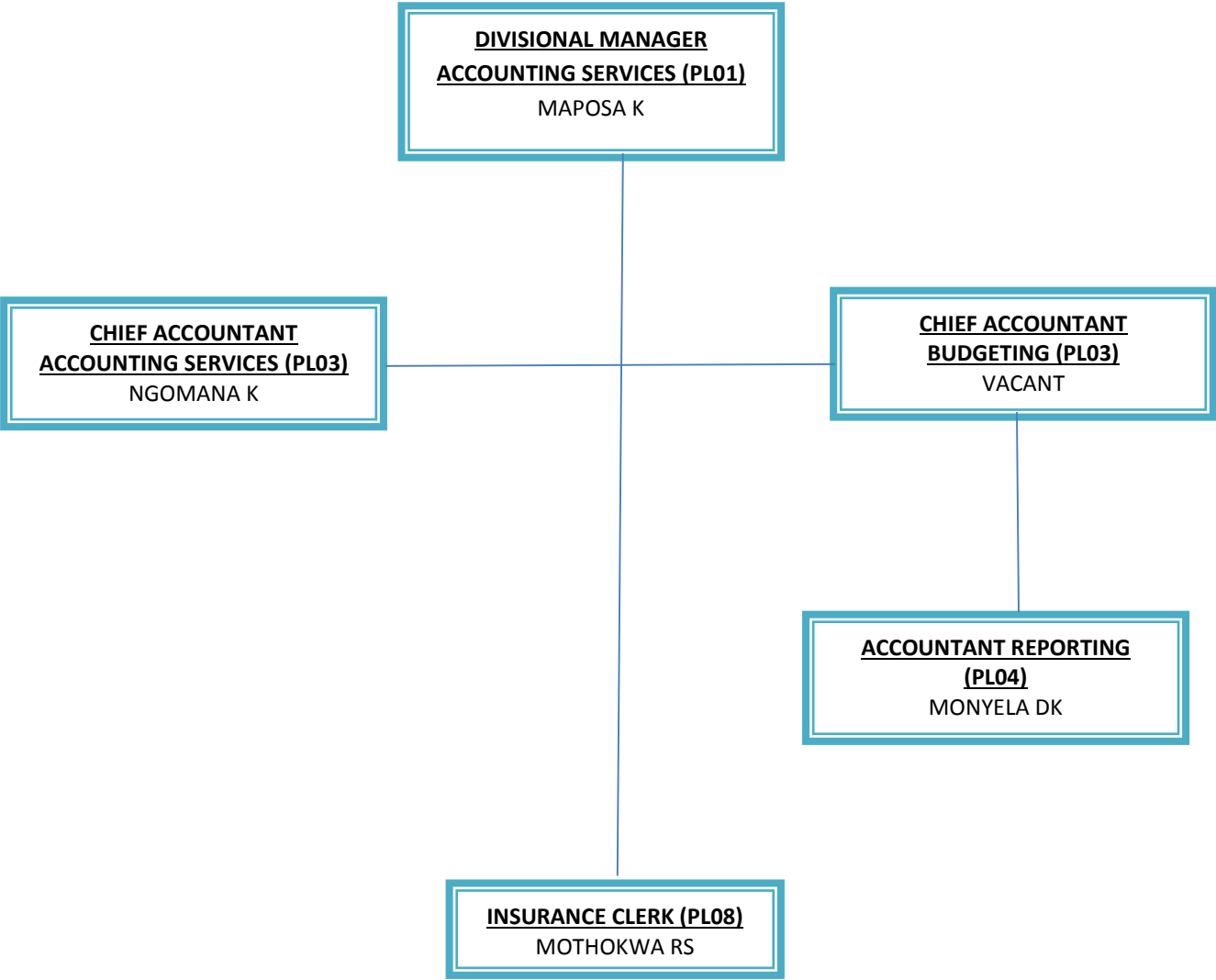
DIVISION: EXPENDITURE CONTINUE



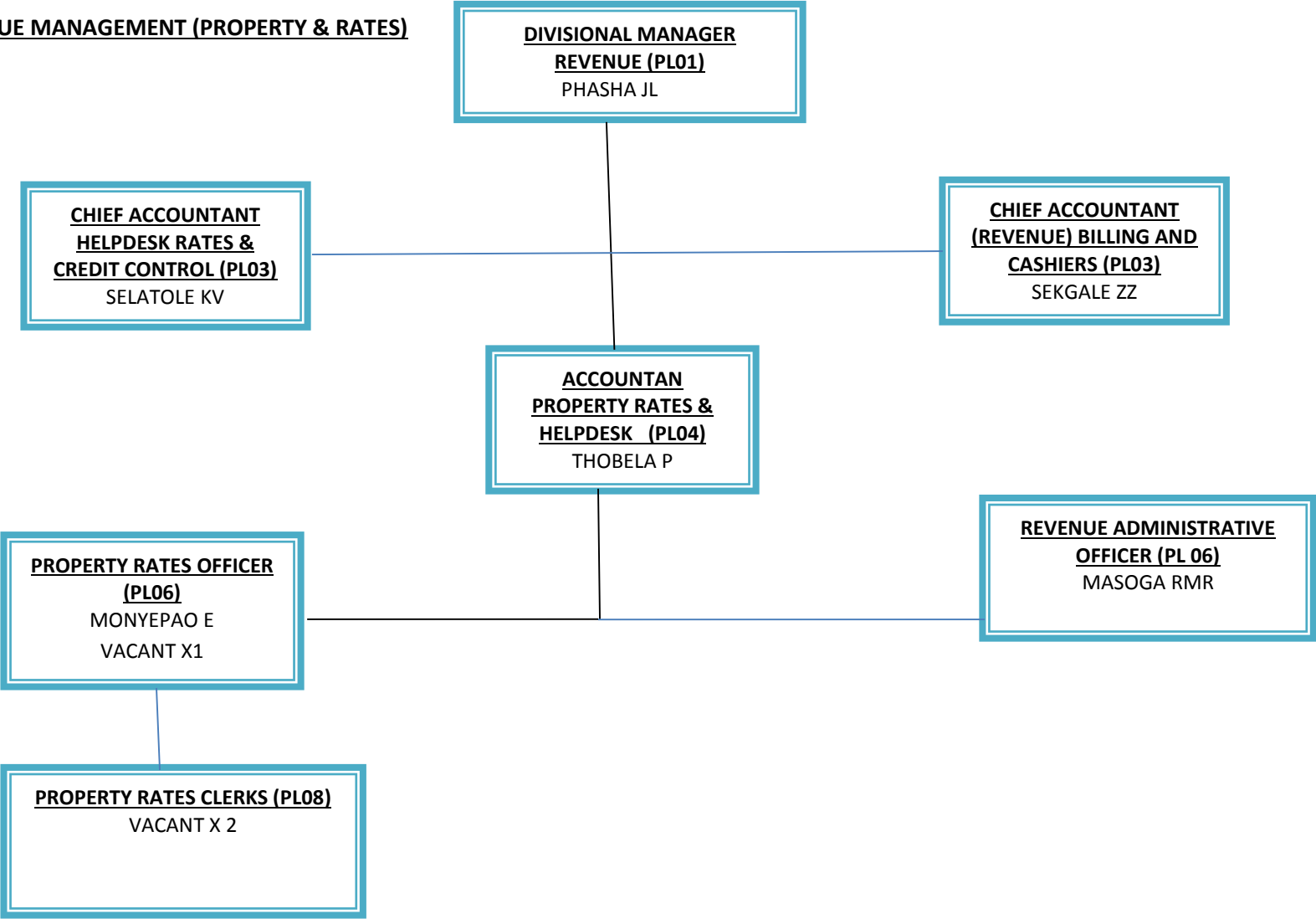
DIVISION ASSETS MANAGEMENT



DIVISION ACCOUNTING SERVICES



DIVISION: REVENUE MANAGEMENT (PROPERTY & RATES)



DIVISION: REVENUE MANAGEMENT DIVISION

DIVISIONAL MANAGER REVENUE
(PL01)
PHASHA LJ

CHIEF ACCOUNTANT REVENUE
(PL03)
SELATOLE V

ACCOUNTANT CREDIT CONTROL
(PL04)
MORULANE NH

ACCOUNTANT BILLING & RECEIPTING (PL04)
MOJELA K

SENIOR CREDIT CONTROL OFFICER (PL05)
VACANT

BILLING OFFICER (PL06)
MOTLHATHEDI L

SUPERVISOR CASHIER (T07)
MALULEKA MF

CREDIT CONTROL OFFICER (PL06)
ROOS H

BILLING CLERK (PL08)
VACANT

INDIGENT CLERK (PL08)
VACANT

DEBT COLLECTION CLERK x5 (PL08)
SITHOLE MM
MOSELANE T
MADISHA MM
VACANT X 2

METER INSPECTORS (PL08)
MAJADIBODU NJ
LEDWABA KM

CASHIER X5 (PL10)
RADEBE MS
LEVHIMBI M
TSHOSHI
KOKA MM
MASENYA MB
NEW PROPOSED X 2

METER READERS (PL15)
NEW PROPOSED
POST LEVEL (10)
BALOYI NG NDLOVU MJ
NGOBENI NM KOKOPANE KJ
MURUDU MJ SELEKA TJ