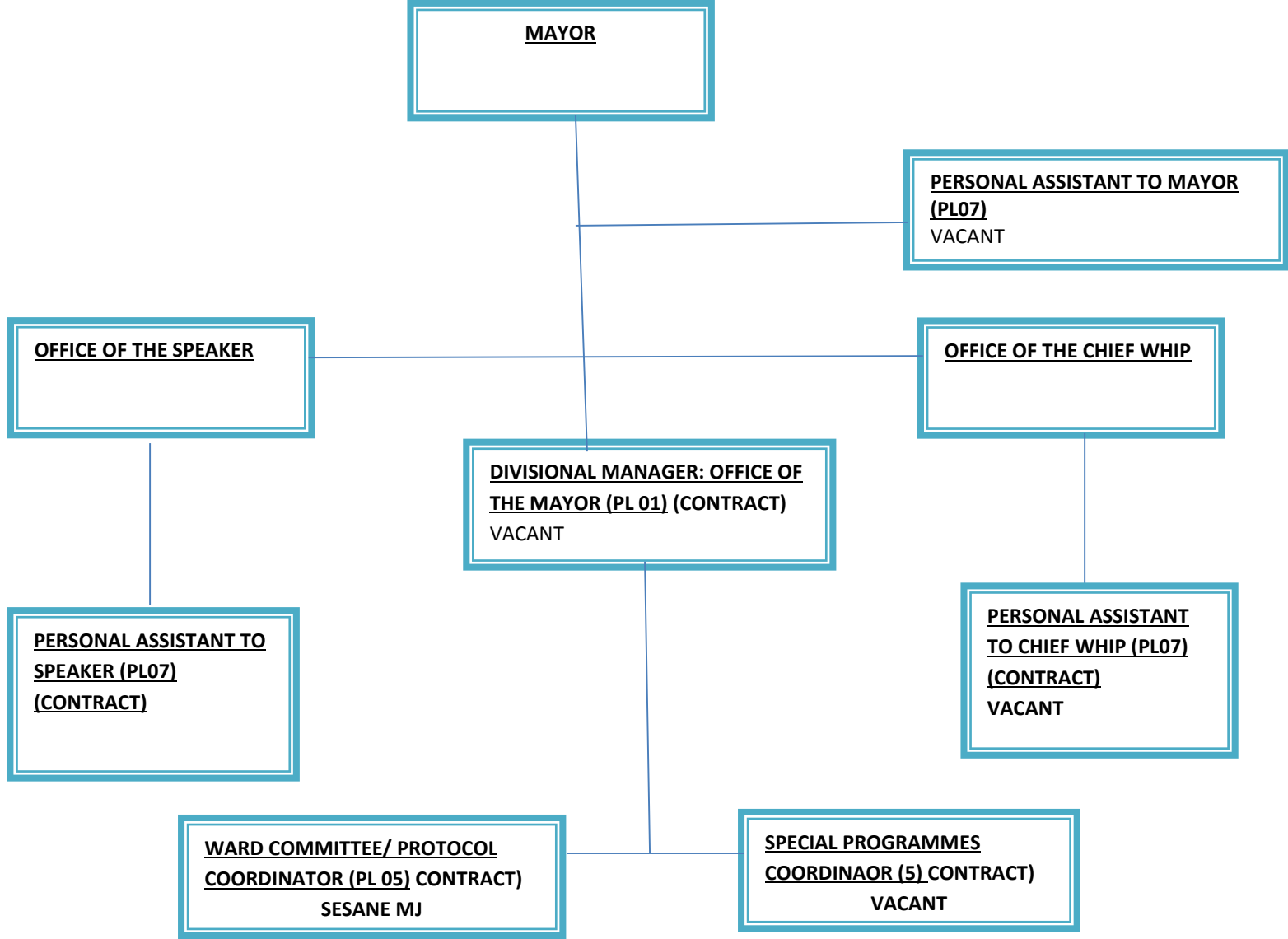


**APPROVED  
ORGANIZATIONAL  
STRUCTURE  
2018/19**

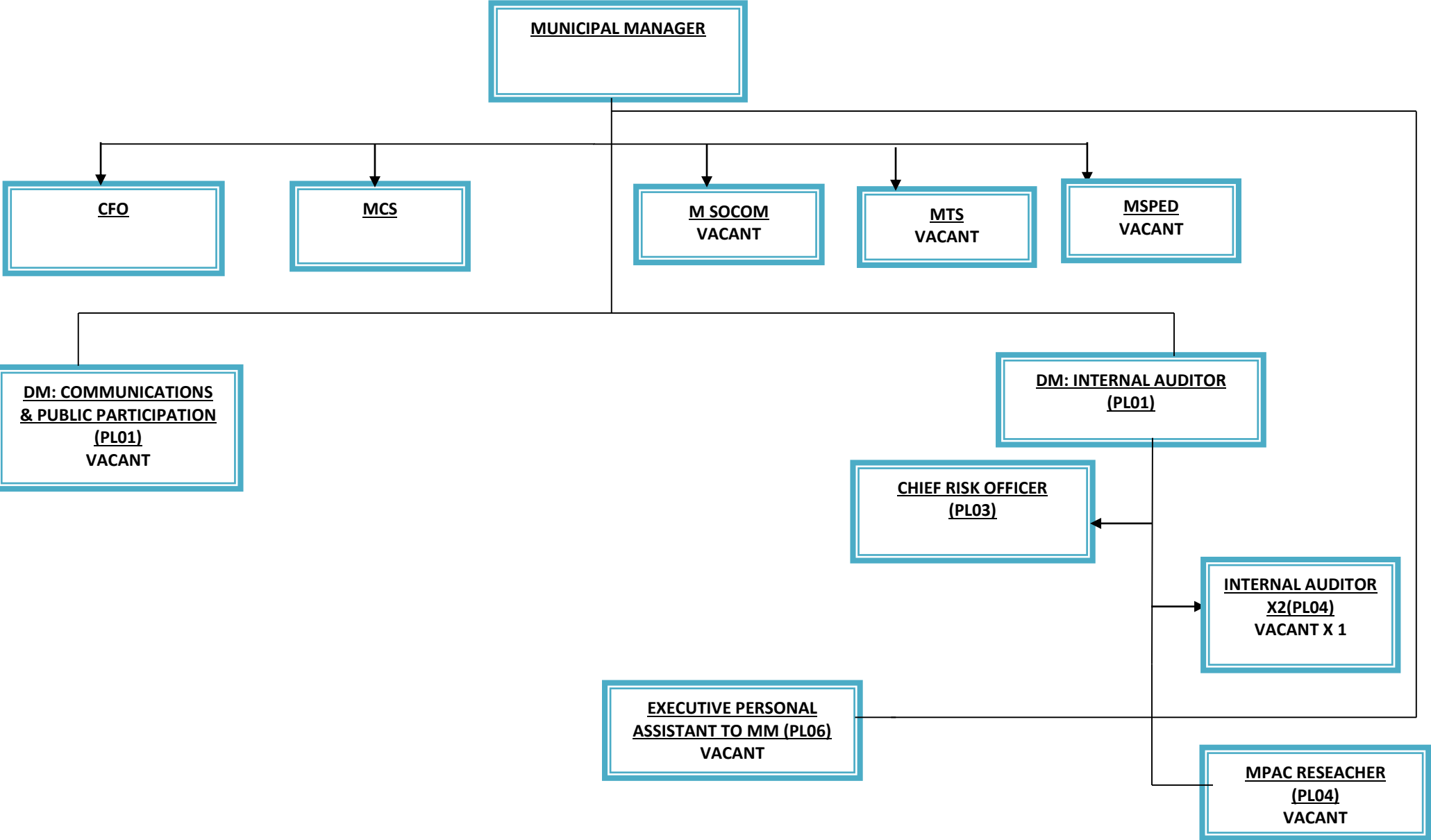
# **MAYOR'S OFFICE ORGANOGRAM**

ORGANOGRAM- OFFICE OF THE MAYOR/CHIEF WHIP/SPEAKER

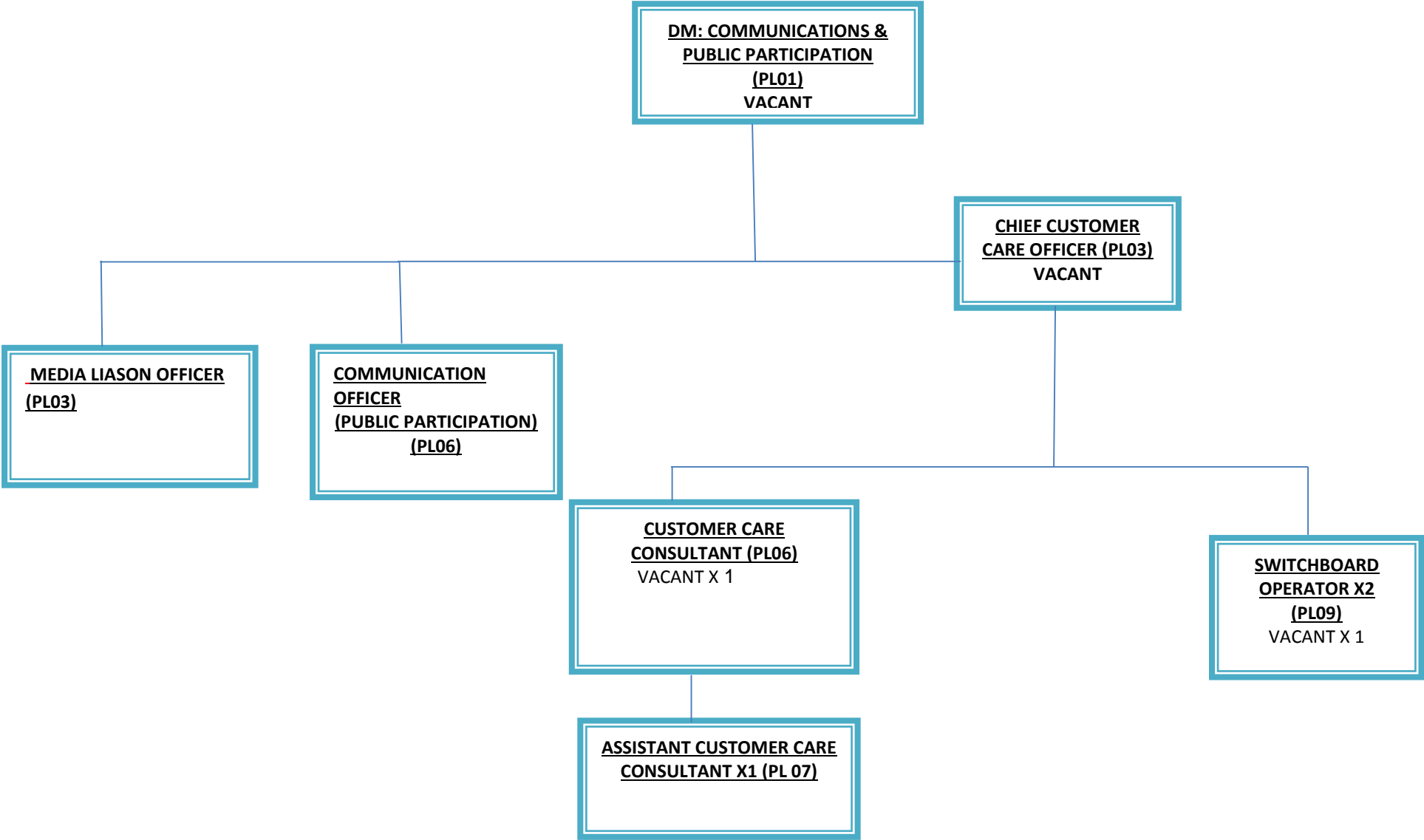


# **MUNICIPAL MANAGER'S OFFICE ORGANOGRAM**

ORGANOGRAMS – MUNICIPAL MANAGER’S OFFICE DIVISION

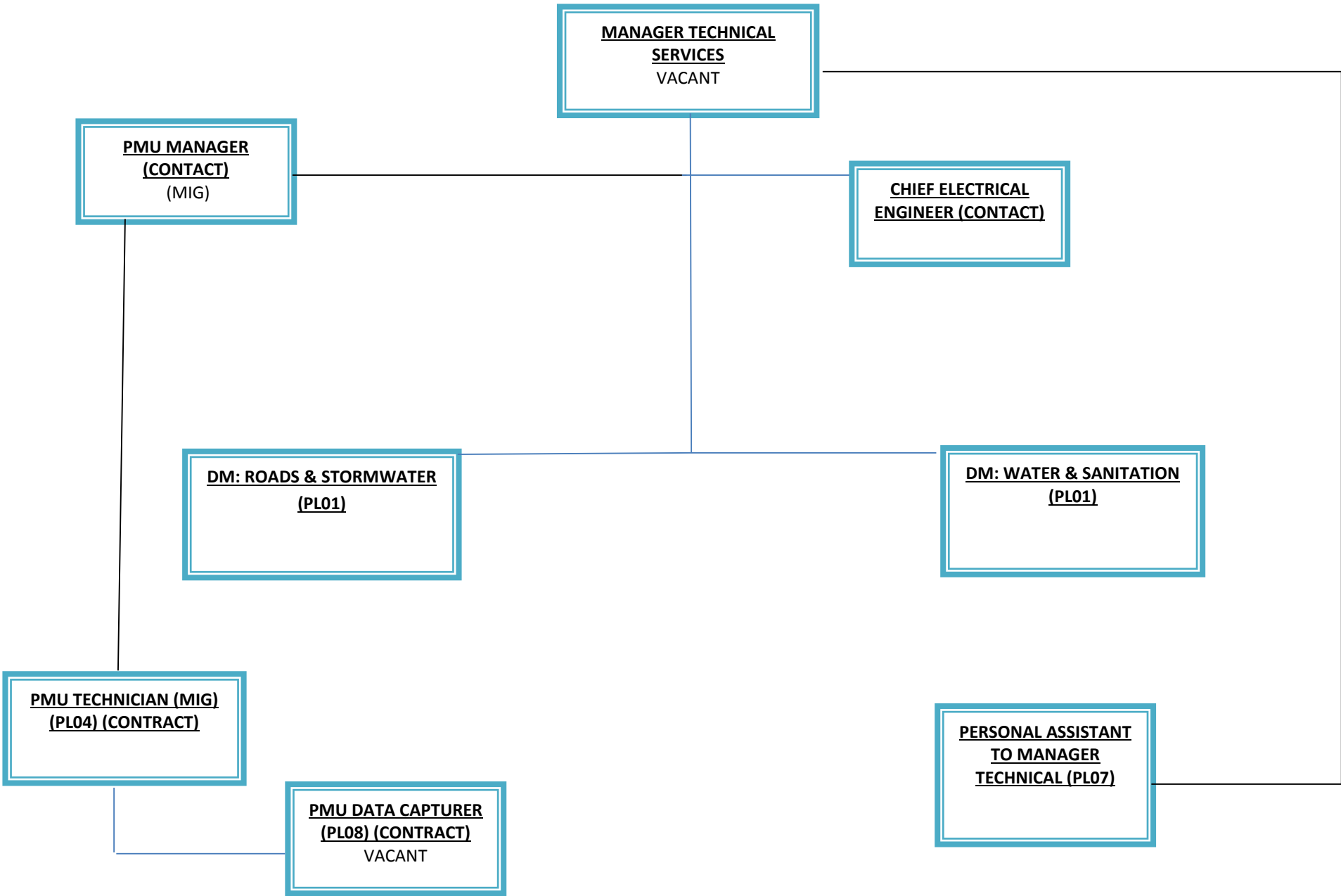


ORGANOGRAM- COMMUNICATION DIVISION



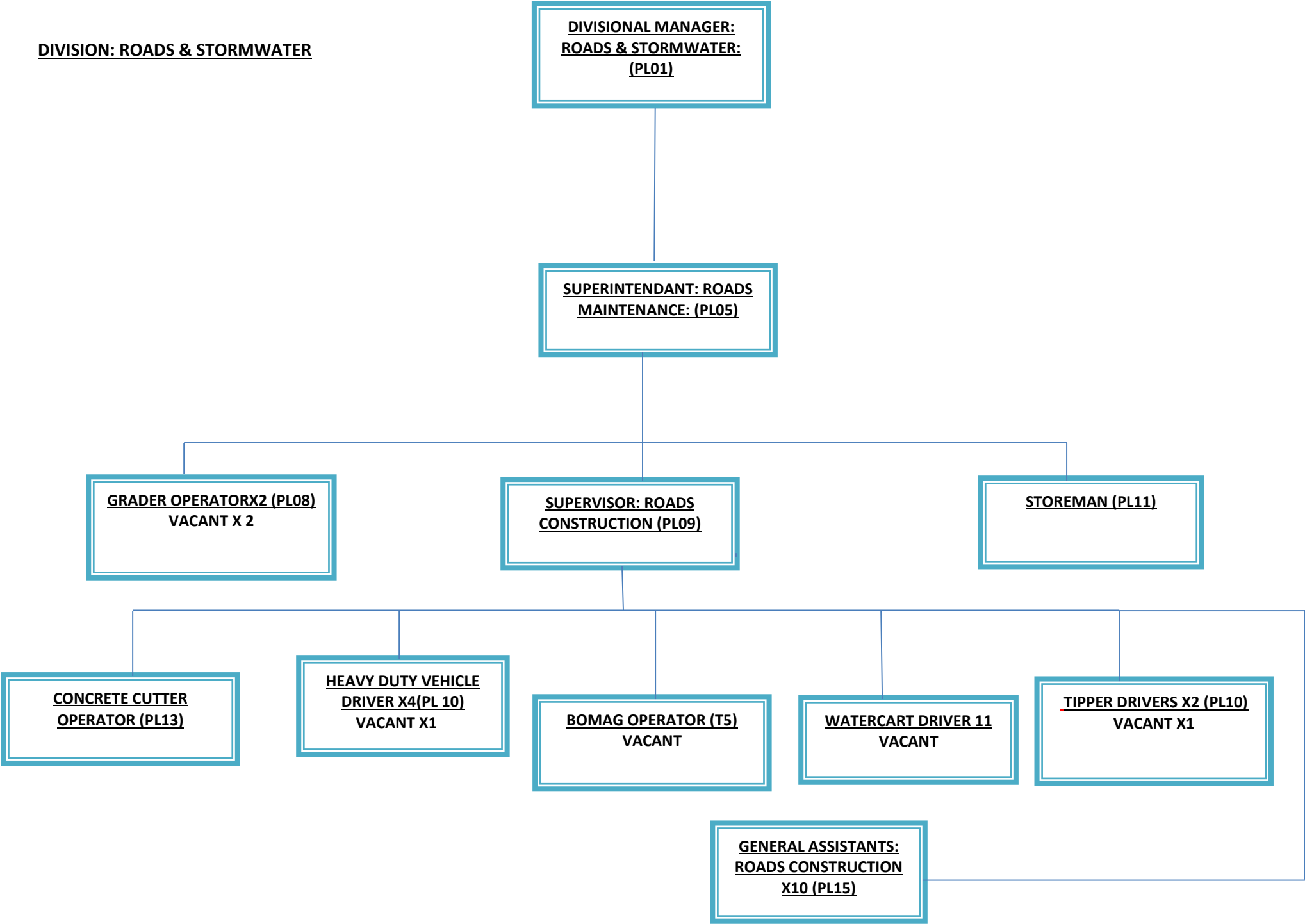
# **TECHNICAL SERVICE'S OFFICE ORGANOGRAM**

ORGANOGRAMS – MANAGER TECHNICAL SERVICES

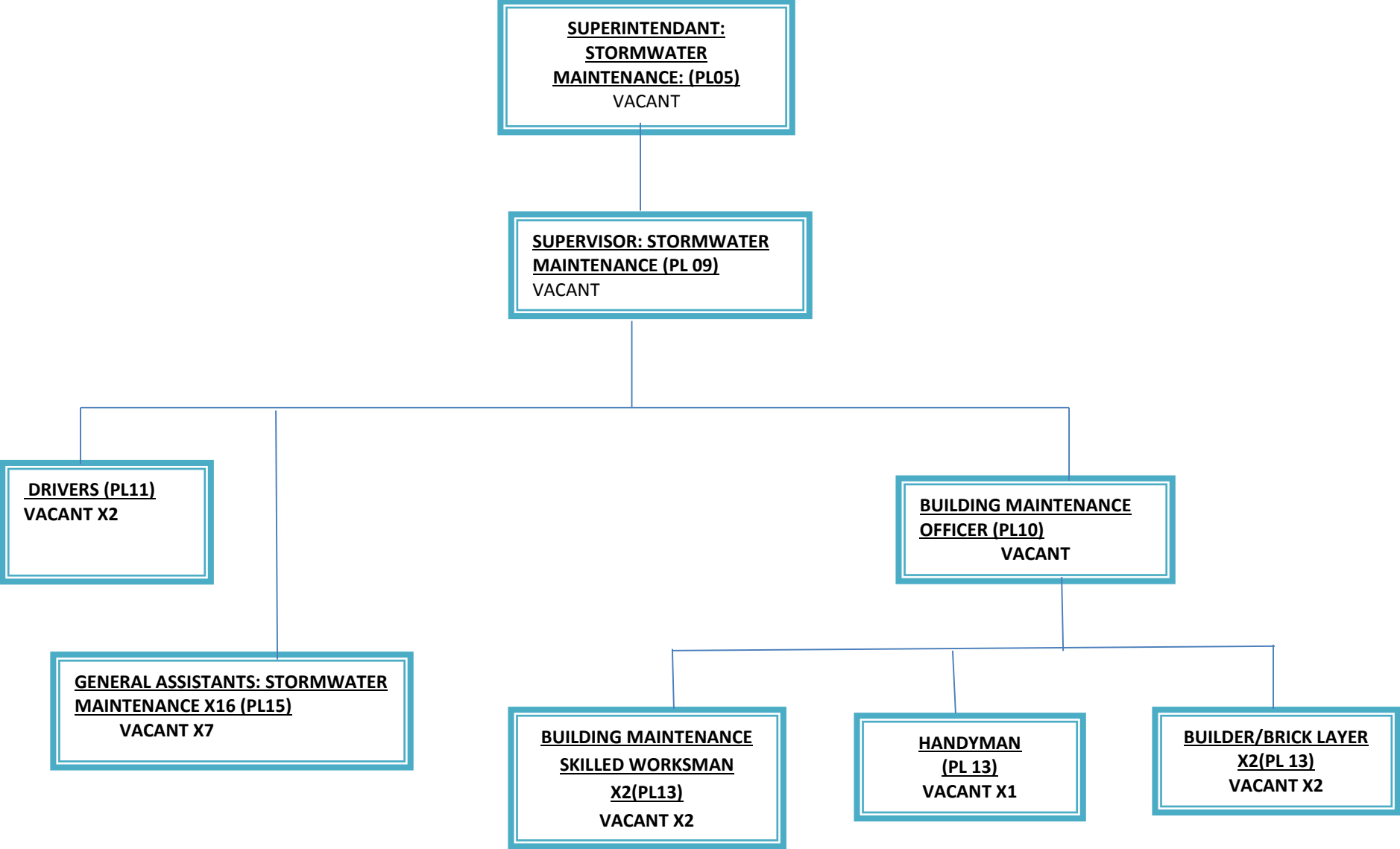




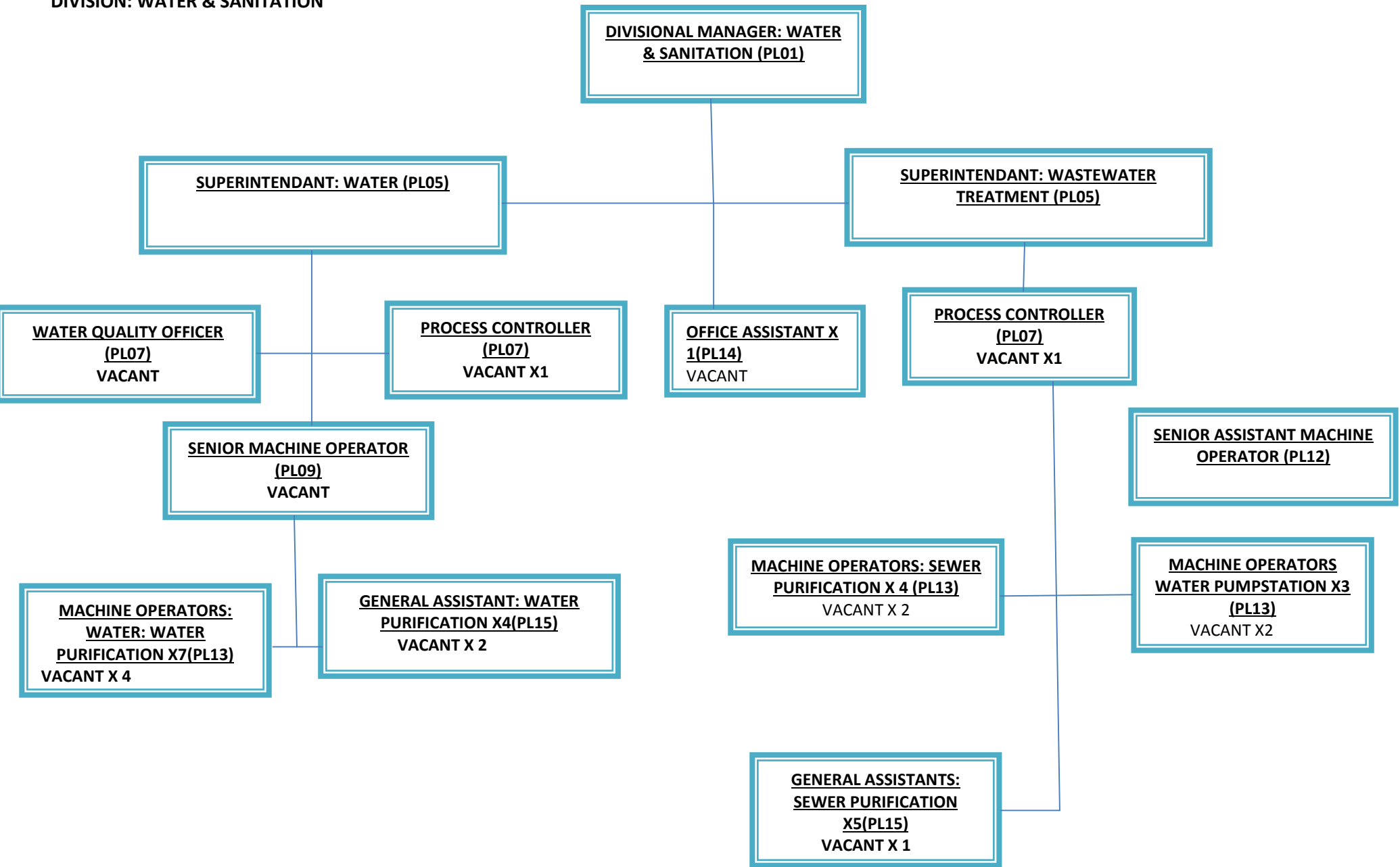
DIVISION: ROADS & STORMWATER



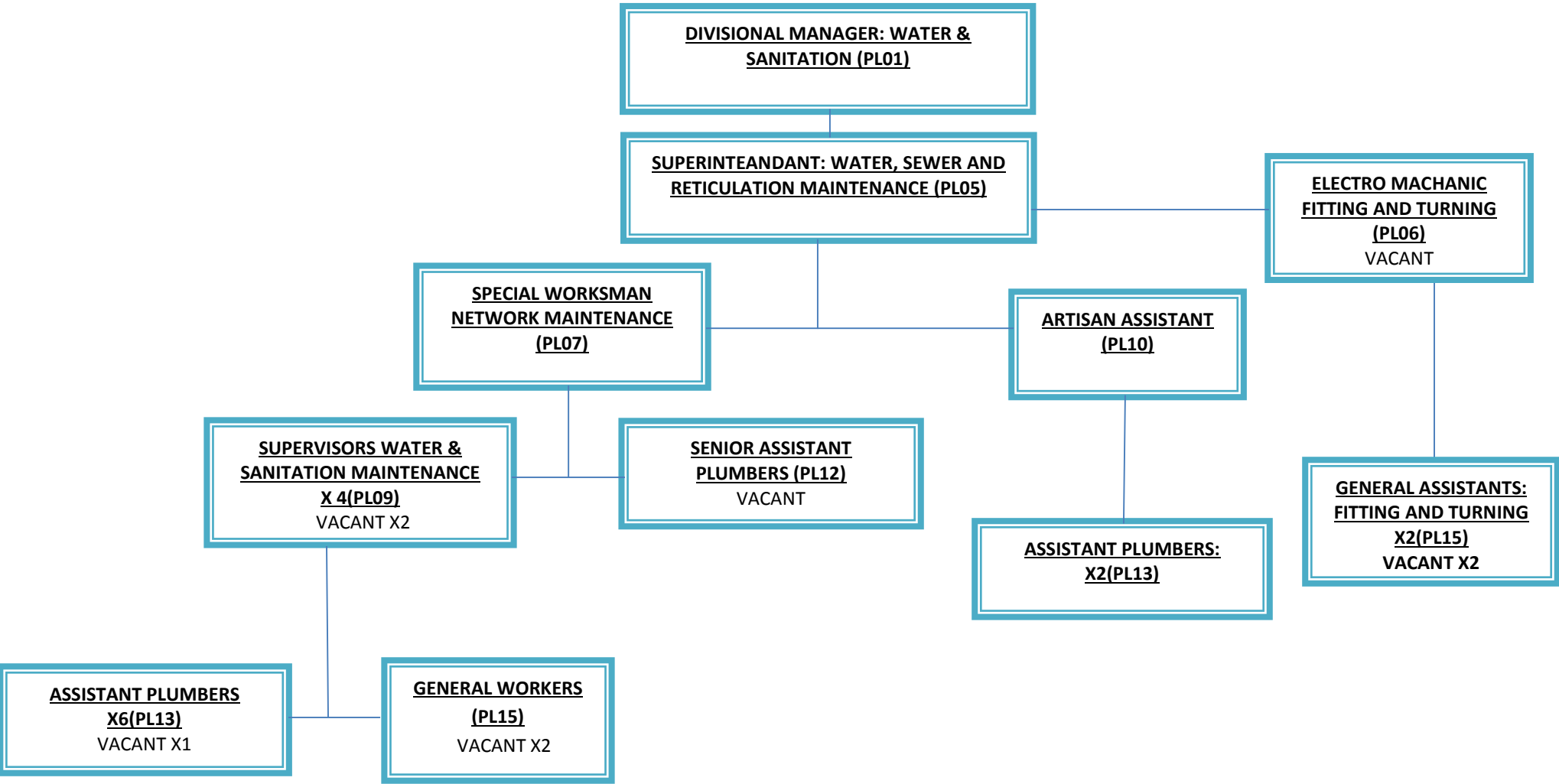
DIVISION: ROADS & STORMWATER



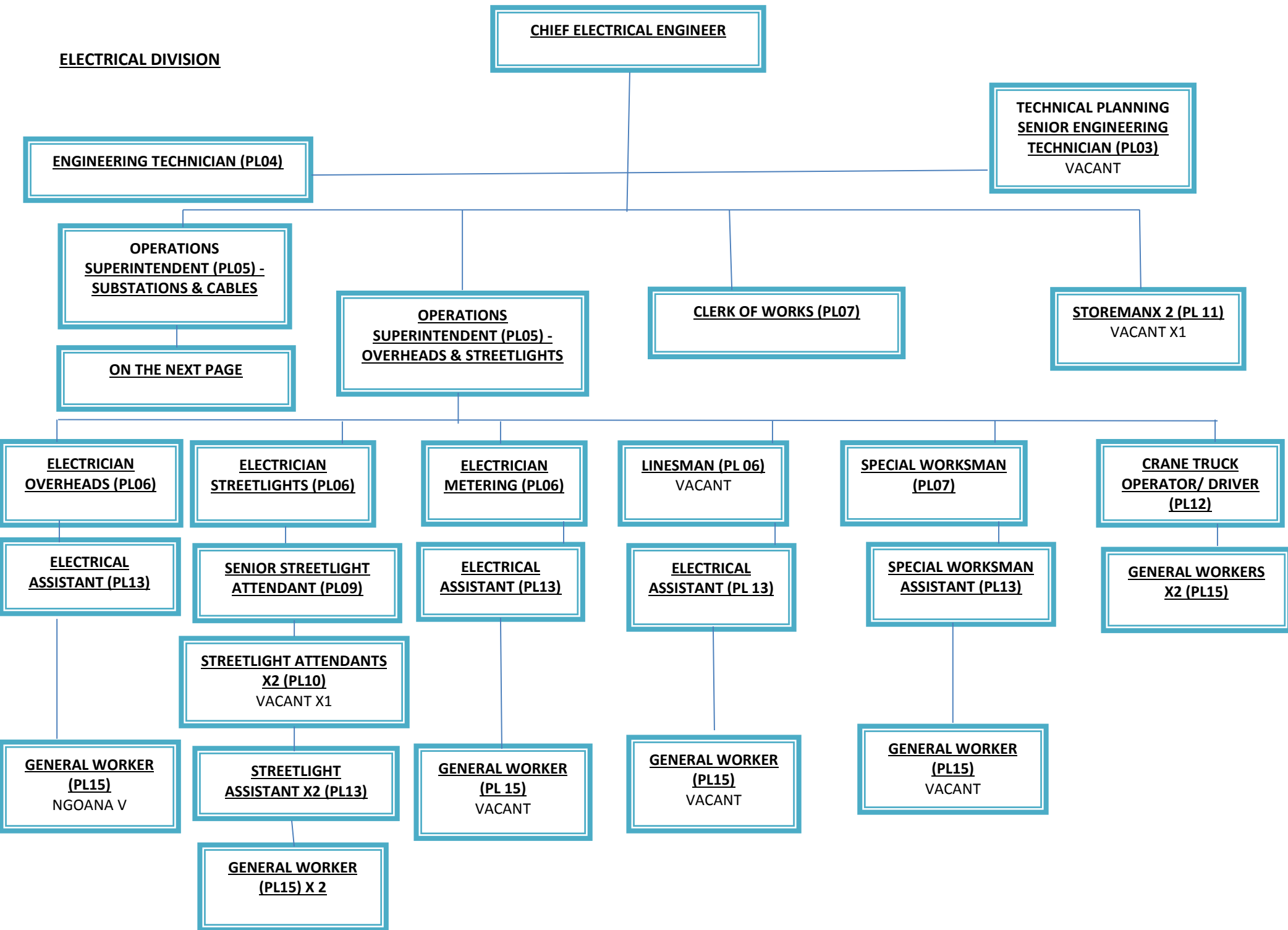
DIVISION: WATER & SANITATION



DIVISION: WATER & SANITATION (CONTINUED)



**ELECTRICAL DIVISION**



ELECTRICAL DIVISION

CHIEF ELECTRICAL  
ENGINEER (CONTRACT)

OPERATIONS  
SUPERINTENDENT (PL05) -  
SUBSTATIONS & CABLES

ELECTRICIANS  
Substations (PL06)

ELECTRICIANS  
CABLES (PL06)

ELECTRICIAN  
METERING (PL06)

SENIOR CABLE  
JOINTER (PL05)  
VACANTX1

SPECIAL WORKSMAN  
X2 (PL07)

GRANE TRCUCK  
OPERATOR/DRIVER  
(PL12)  
VACANT

ELECTRICAL  
ASSISTANT (PL13)  
VACANT

ELECTRICAL  
ASSISTANT (PL13)  
VACANT

ELECTRICAL  
ASSISTANT (PL13)  
VACANT

CABLE JOINTER  
(PL06)  
SEEMA LJ

SPECIAL WORKSMAN  
ASSISTANT X2 (PL15)

GENERAL WORKER  
(PL15)

GENERAL WORKER  
(PL15)  
VACANT

GENERAL WORKER  
(PL15)  
VACANT

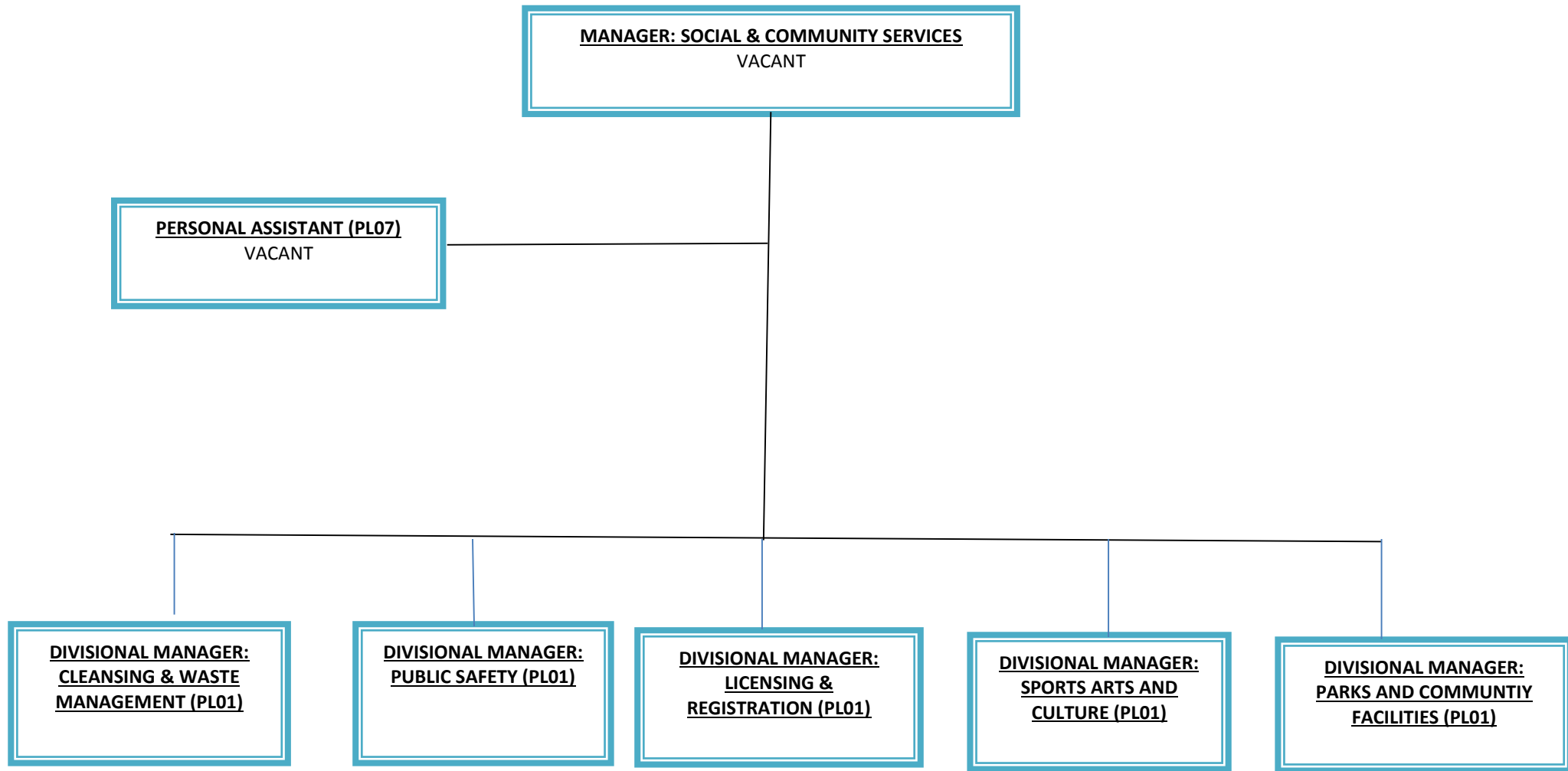
CABLE JOINTER  
ASSISTANT X2 (PL13)  
VACANT X1

GENERAL WORKER X2  
(PL15)  
VACANT X1

GENERAL WORKER X2  
(PL15)

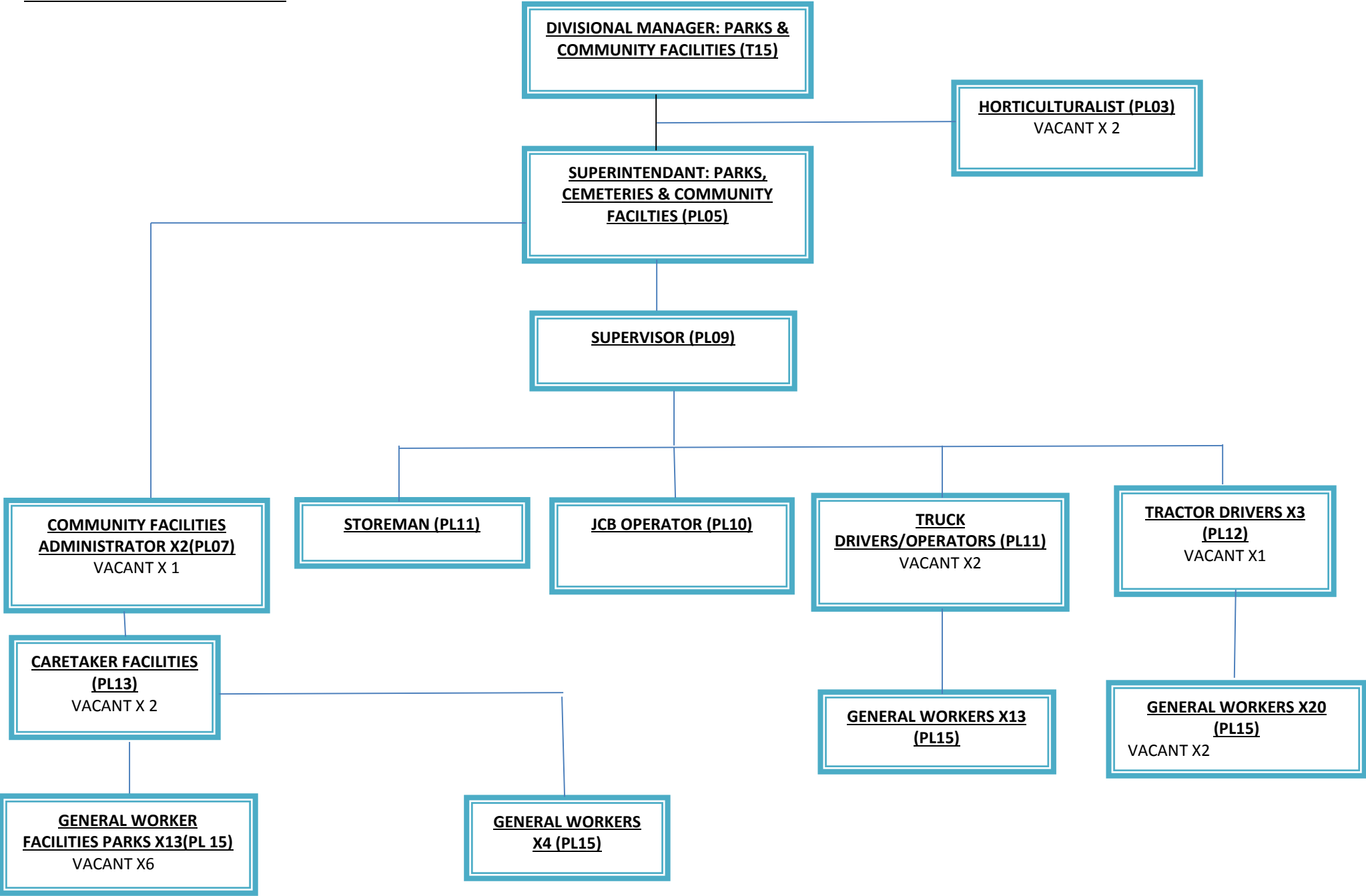
GENERAL  
WORKER (PL15)

# **SOCIAL & COMMUNITY SERVICES ORGANOGRAM**

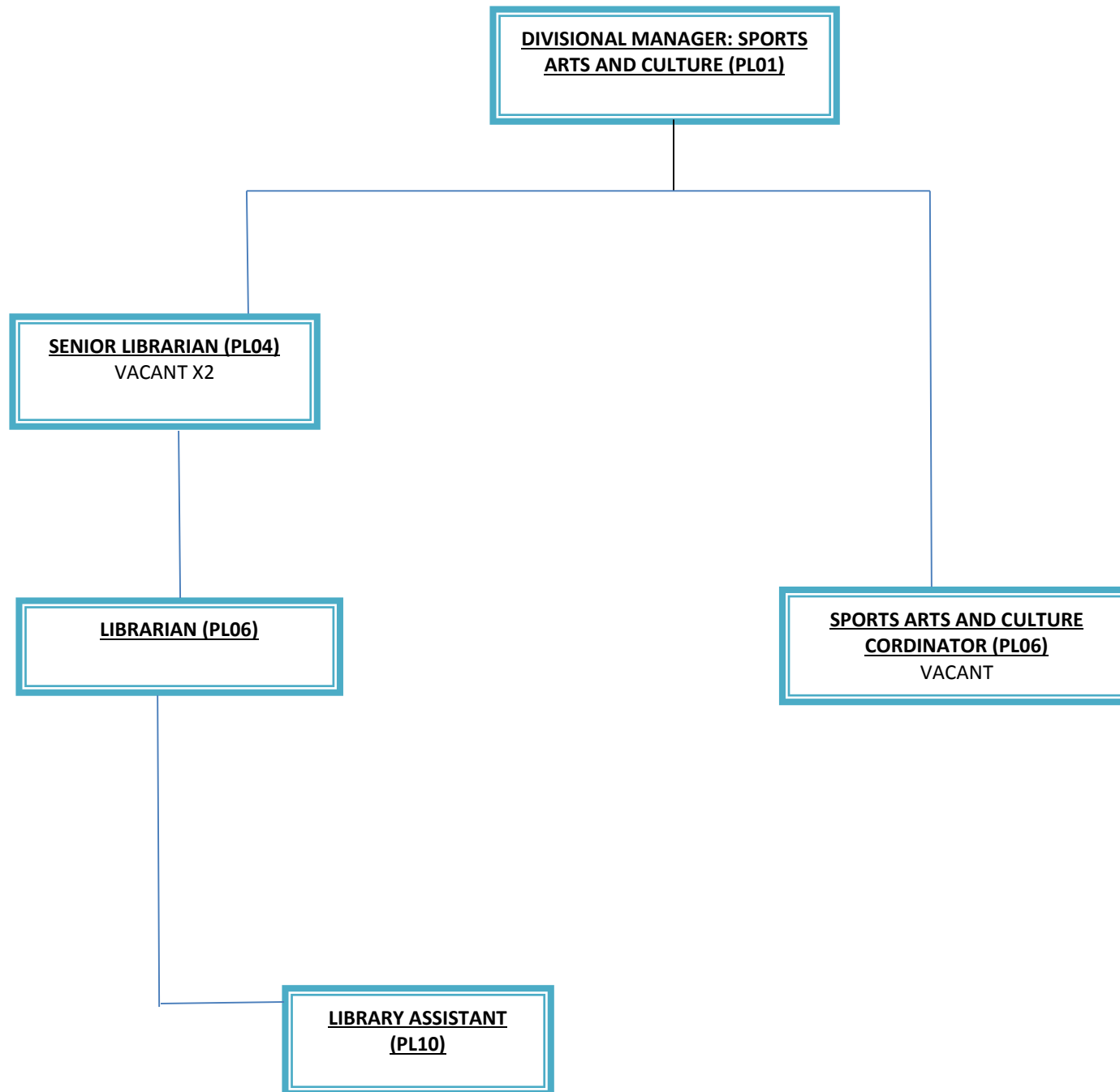




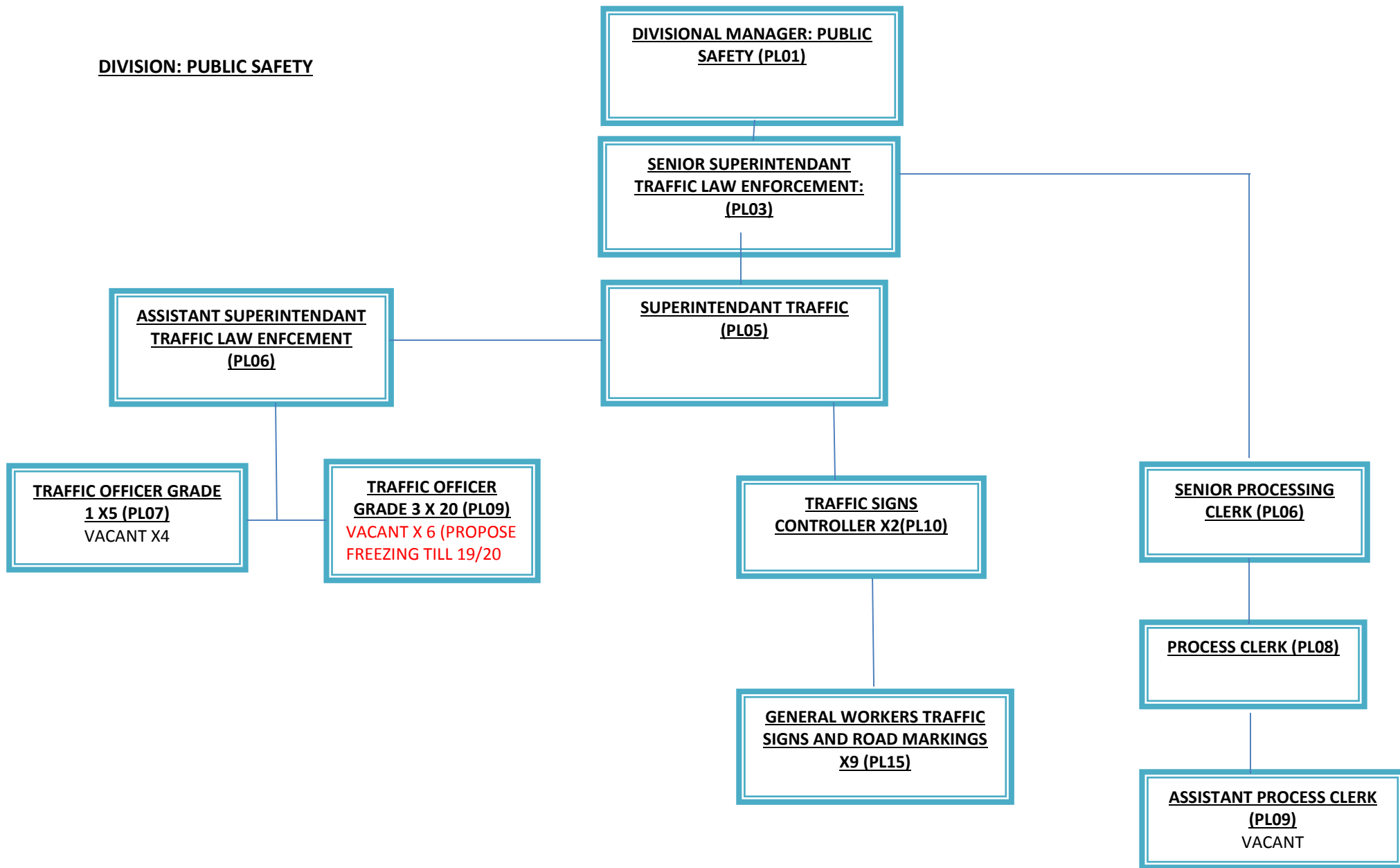
**DIVISION: PARKS & CEMETERIES**



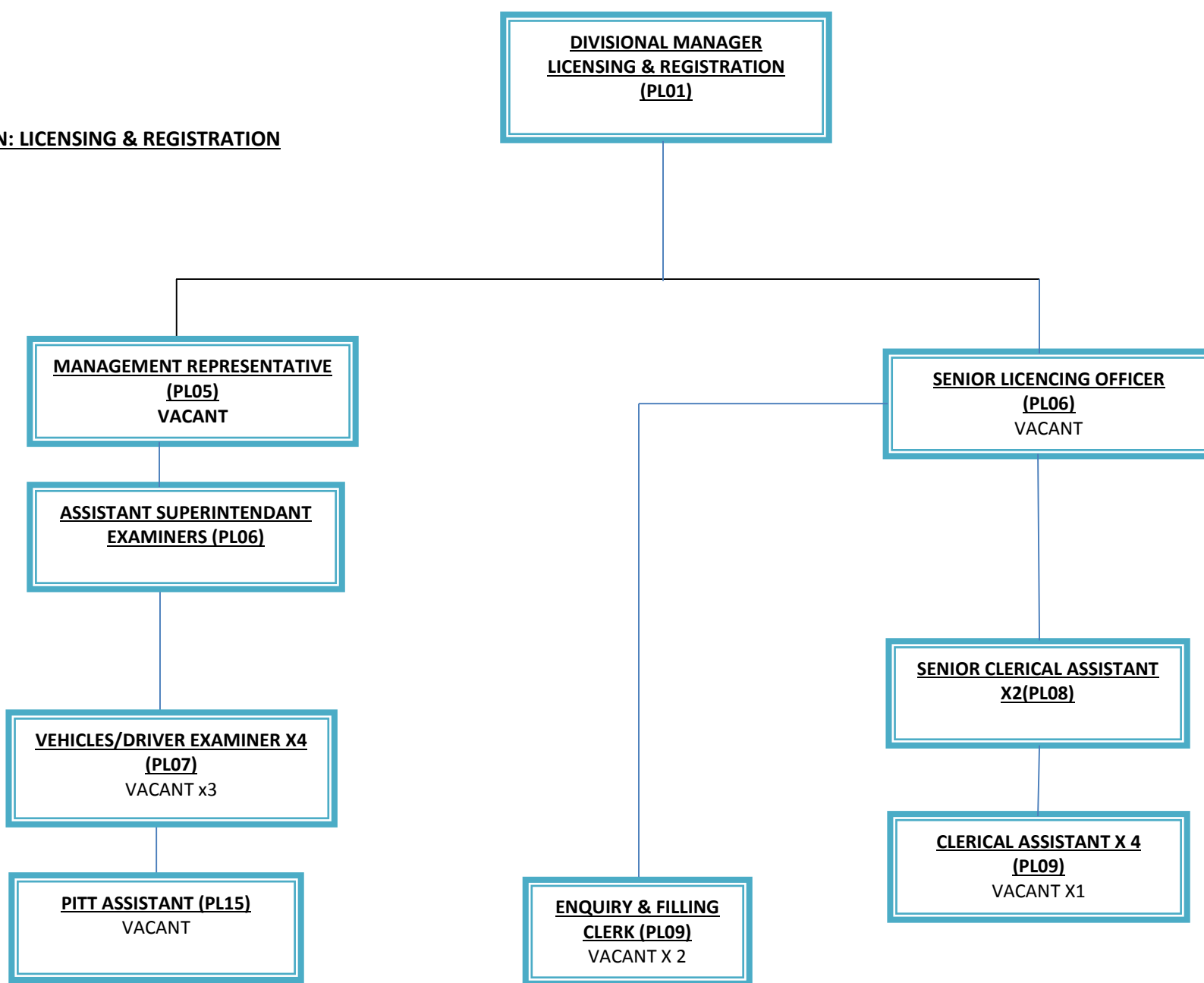
**DIVISION: SPORTS ARTS AND CULTURE**



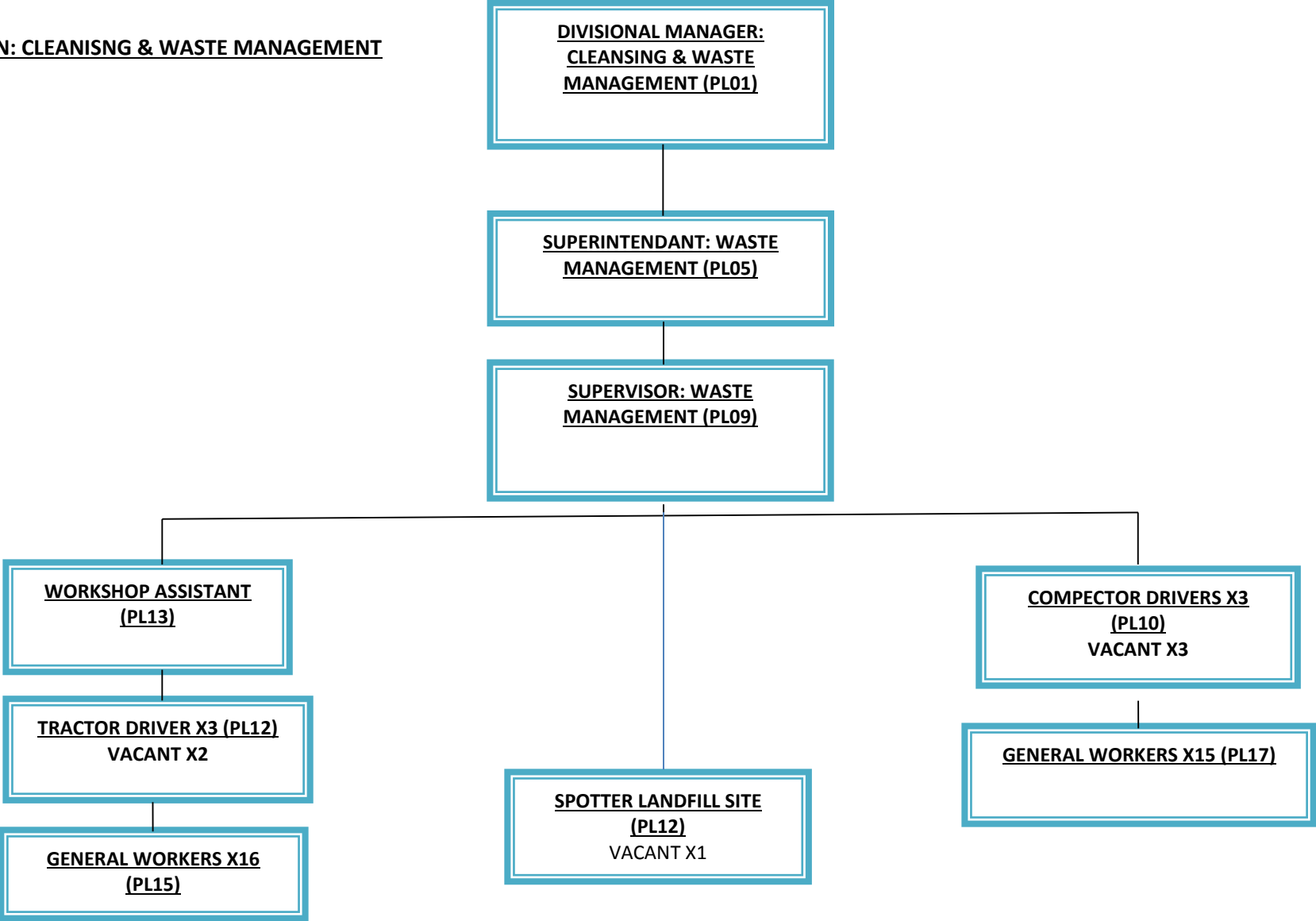
DIVISION: PUBLIC SAFETY



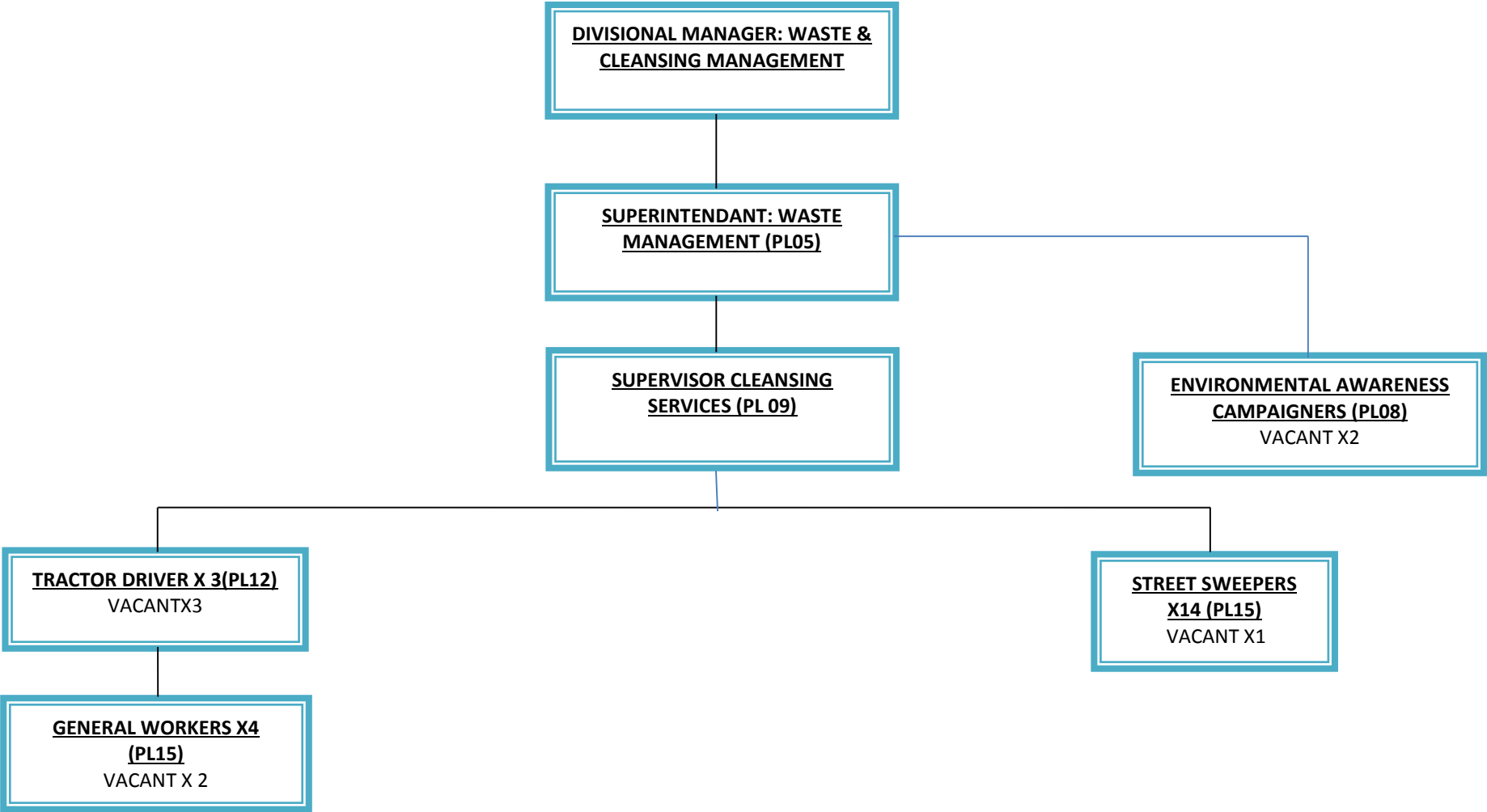
DIVISION: LICENSING & REGISTRATION



DIVISION: CLEANISNG & WASTE MANAGEMENT

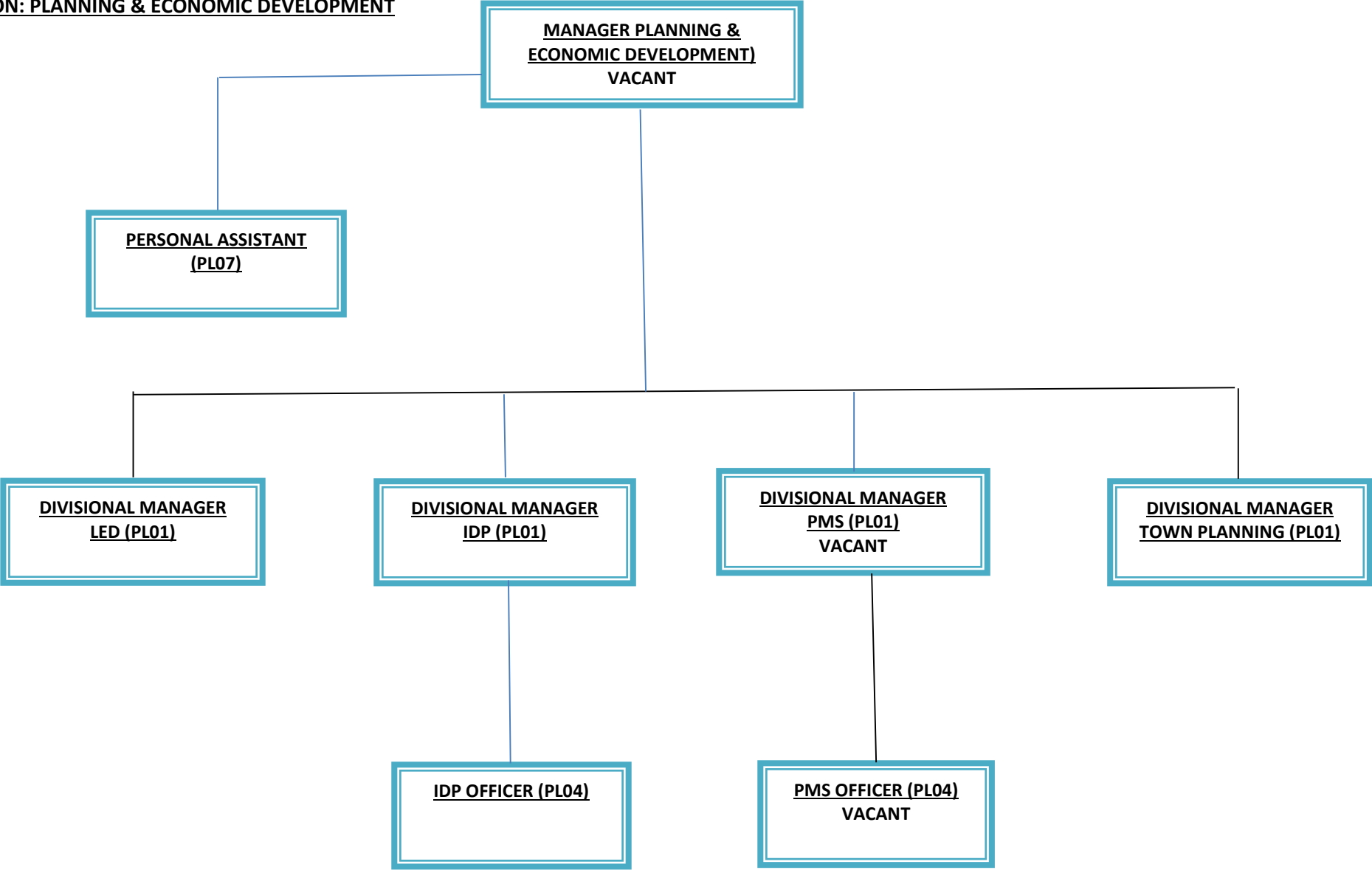


DIVISION: CLEANSING & WASTE MANAGEMENT (CLEANSING)



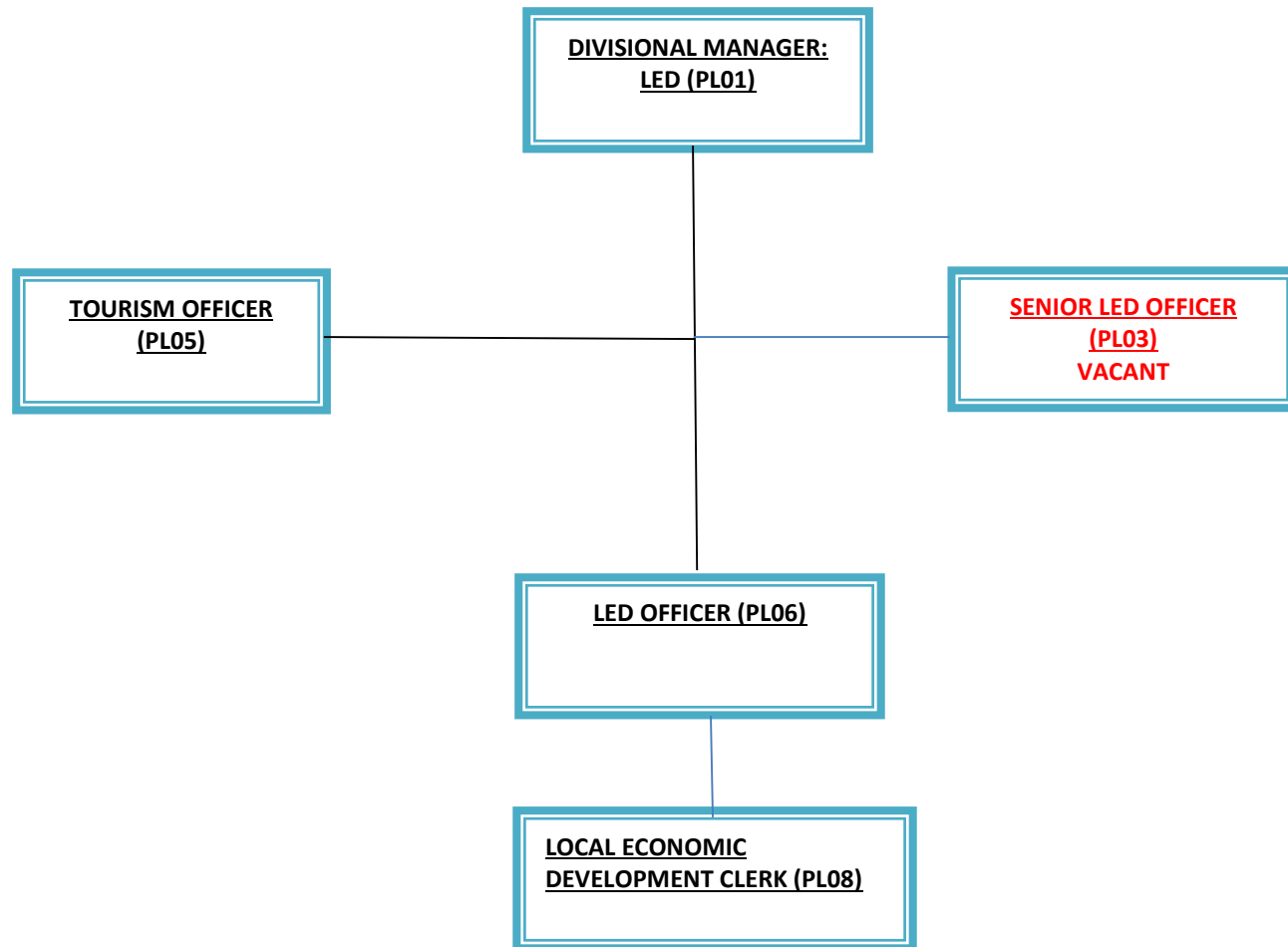
# **PLANNING & ECONOMIC OFFICE ORGANOGRAM**

DIVISION: PLANNING & ECONOMIC DEVELOPMENT

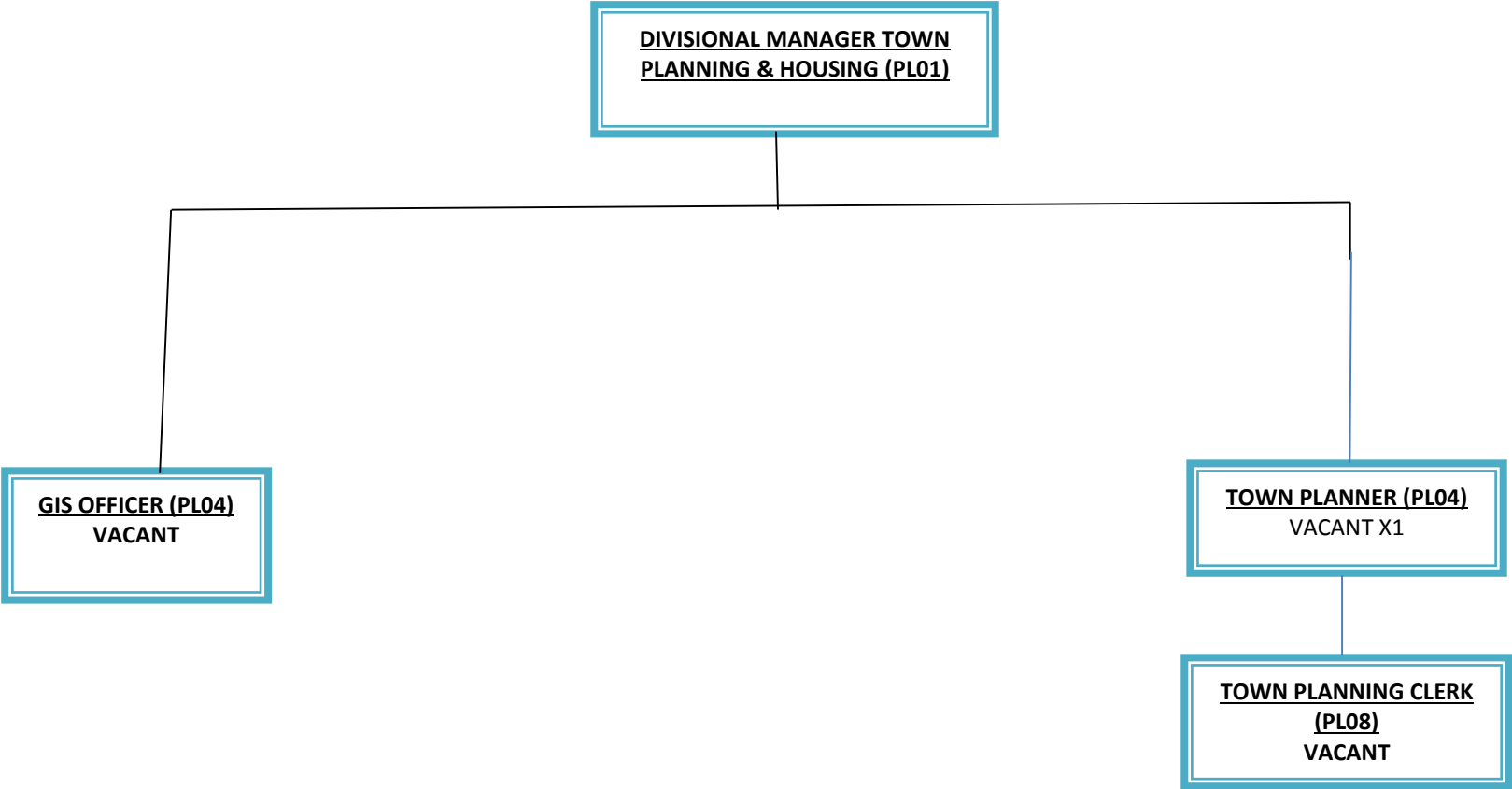




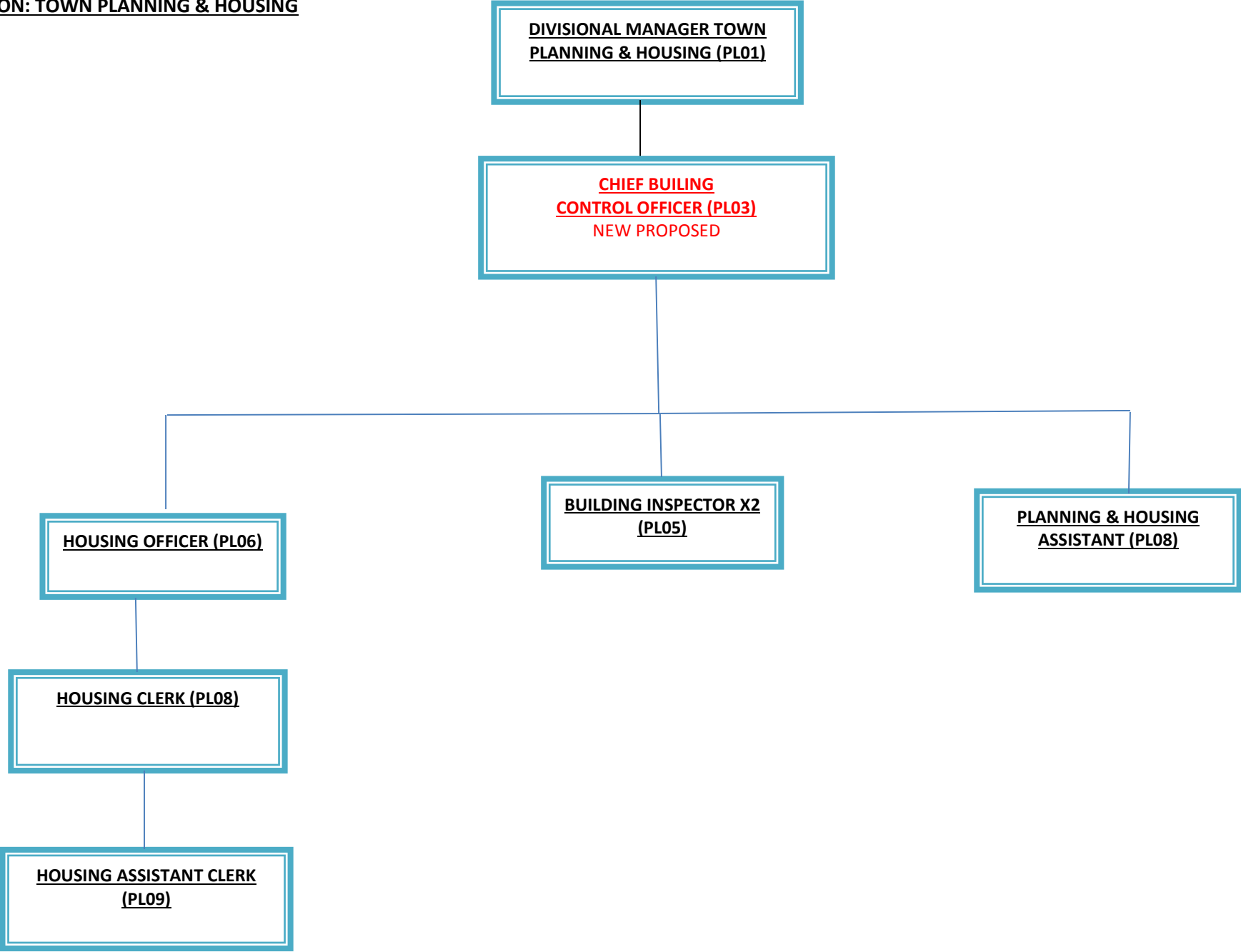
DIVISION: LOCAL ECONOMIC DEVELOPMENT



DIVISION: TOWN PLANNING & HOUSING

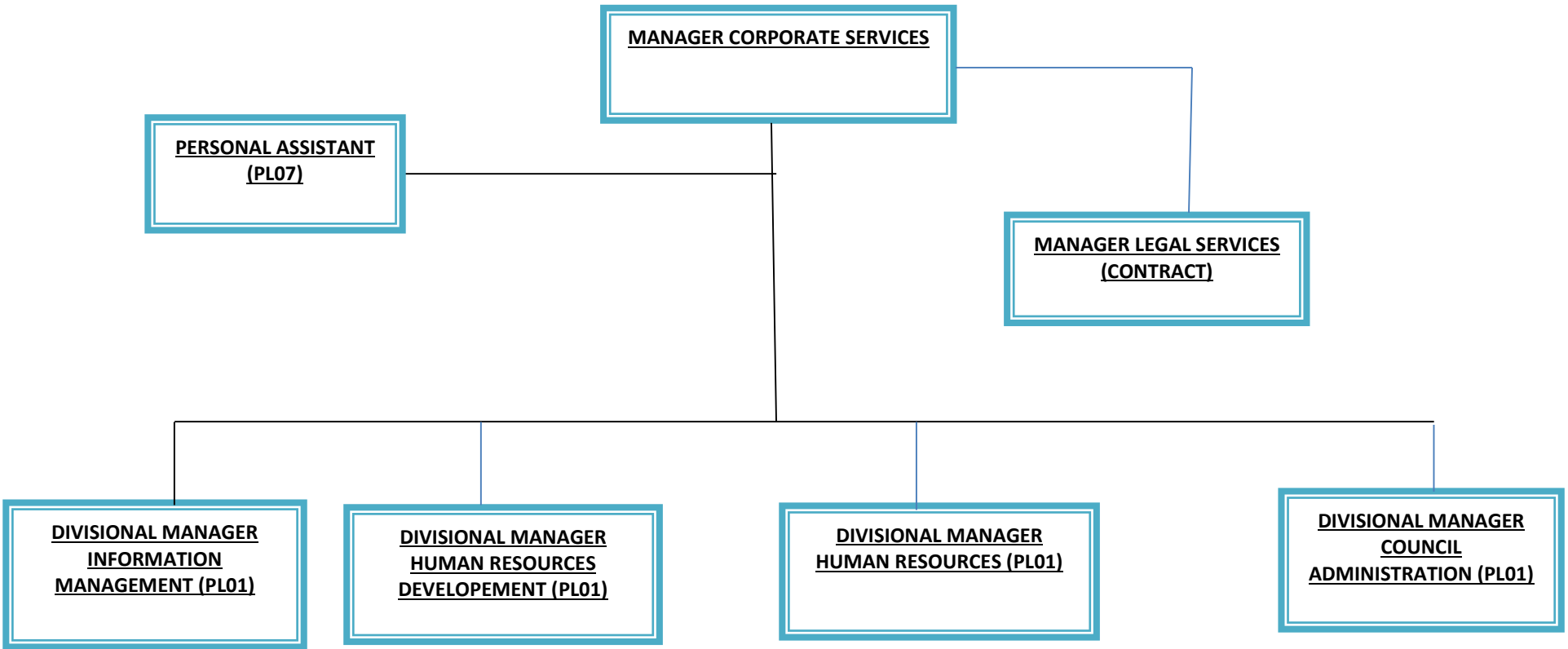


DIVISION: TOWN PLANNING & HOUSING

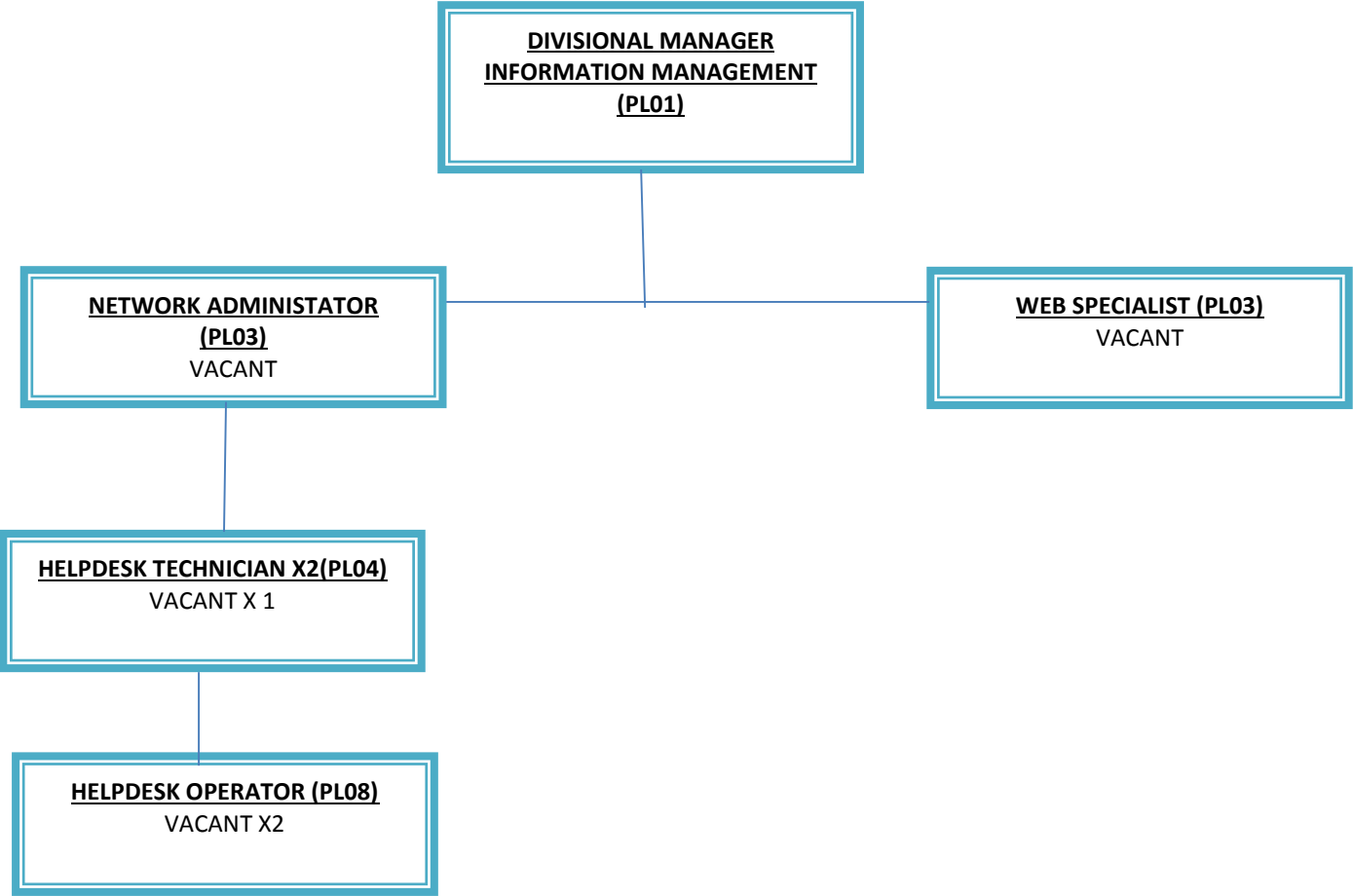


# **OFFICE OF CORPORATE ORGANOGRAM**

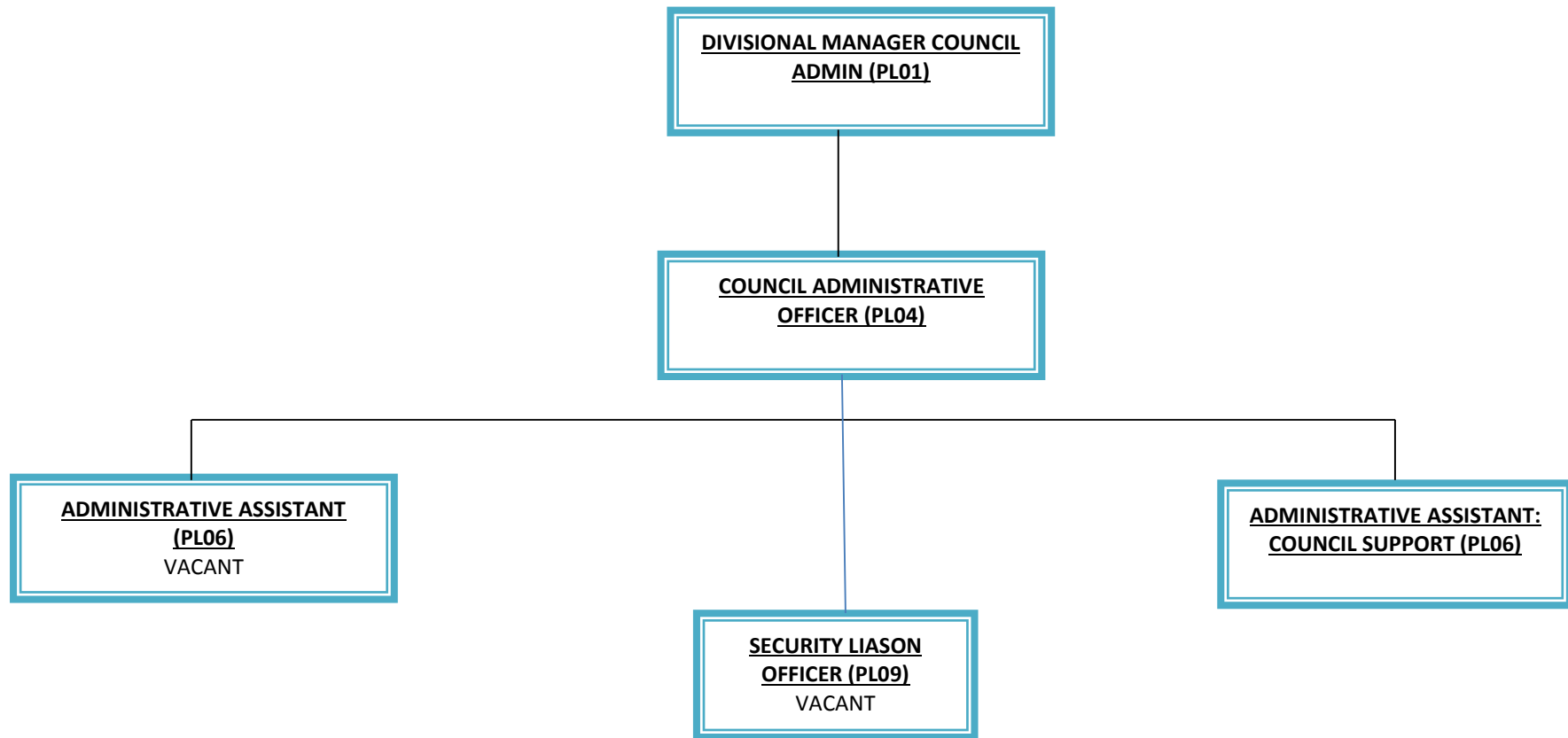
DEPARTMENT: CORPORATE SERVICES



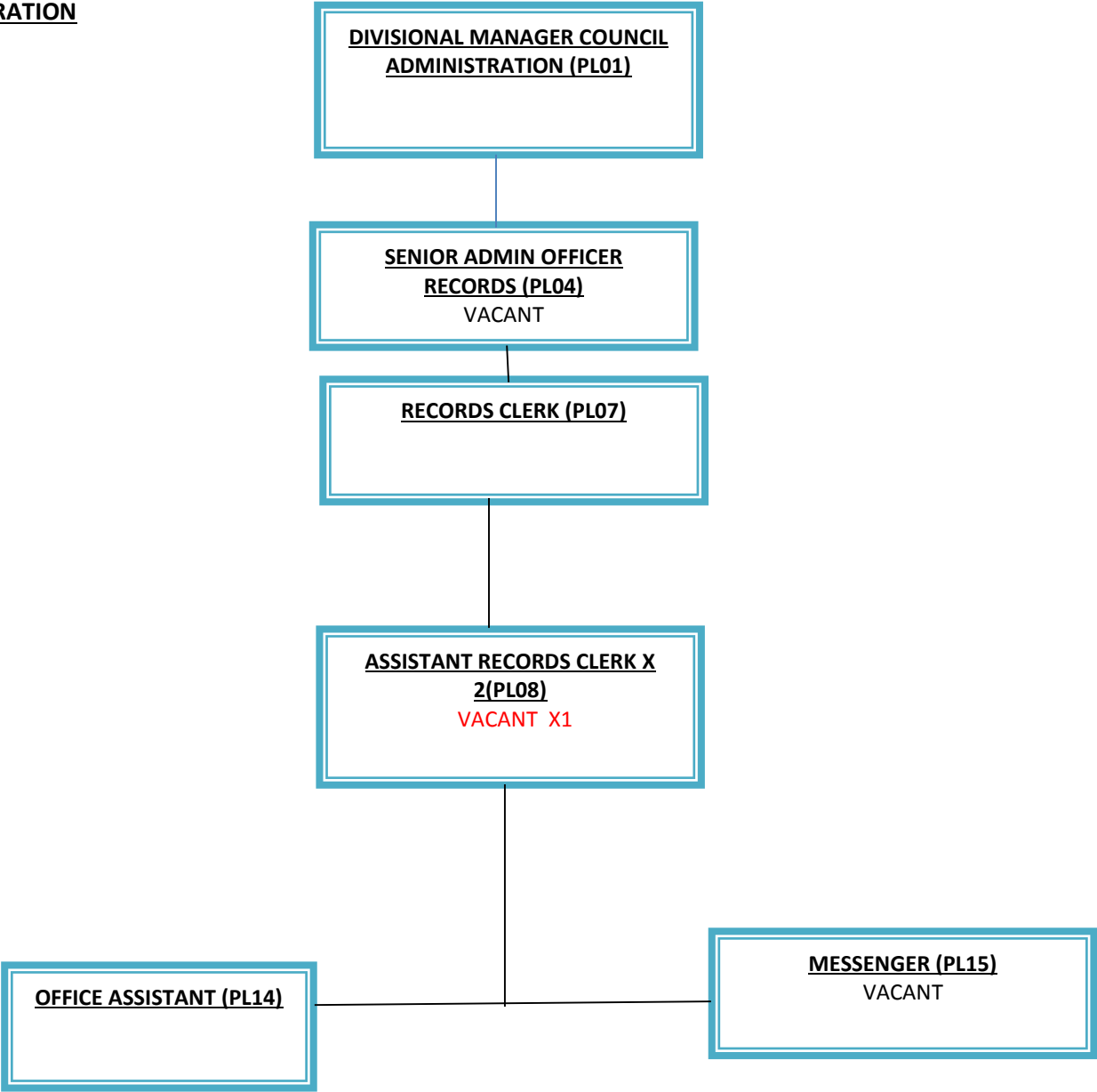
INFROMATION TECHNOLOGY DIVISION



**DIVISION: COUNCIL ADMIN**

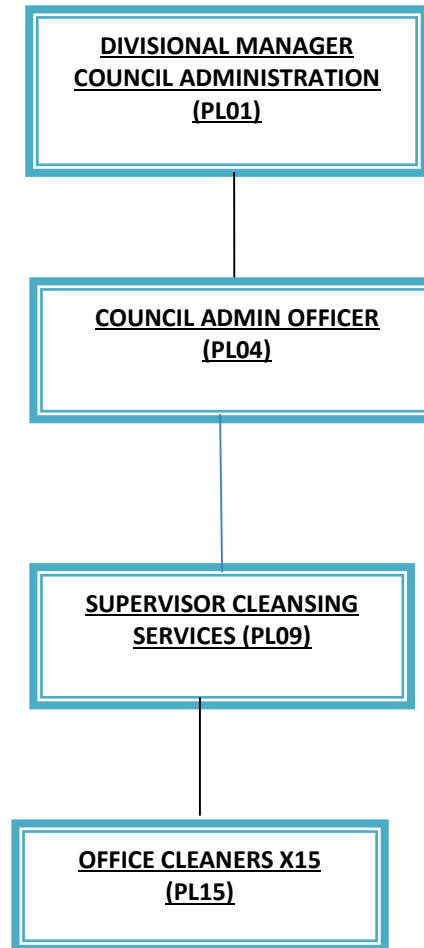


**DIVISION: COUNCIL ADMINISTRATION**

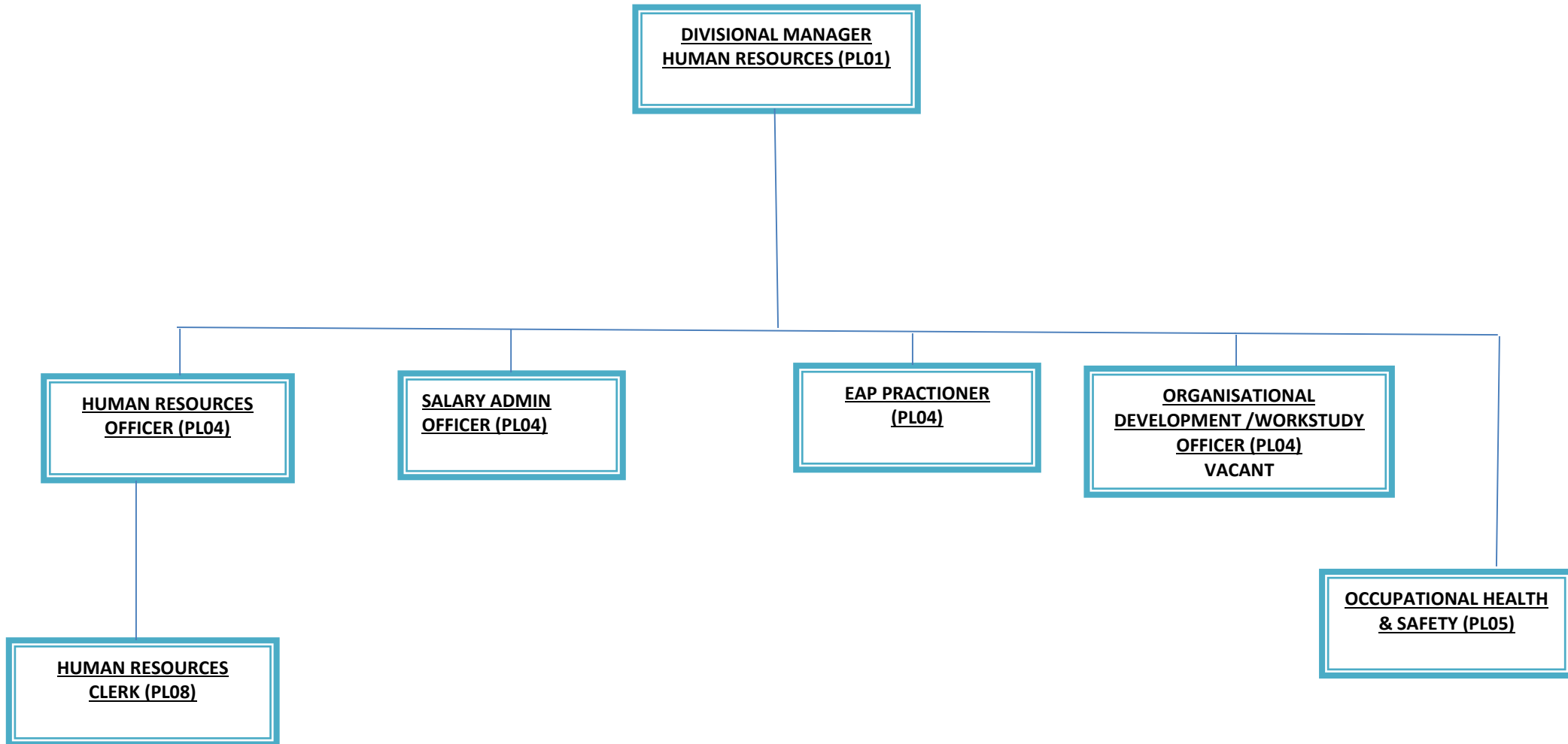




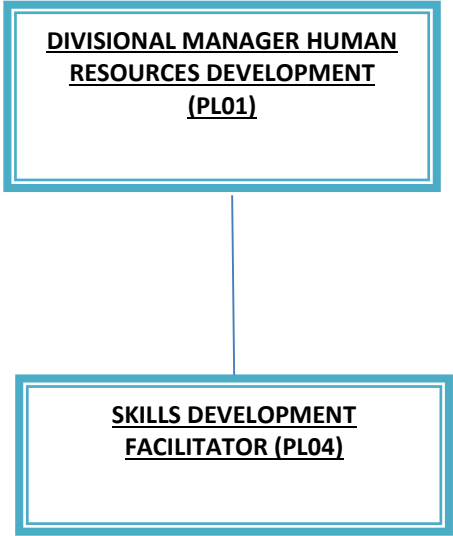
**DIVISION COUNCIL ADMINISTRATION (CONTINUED)**



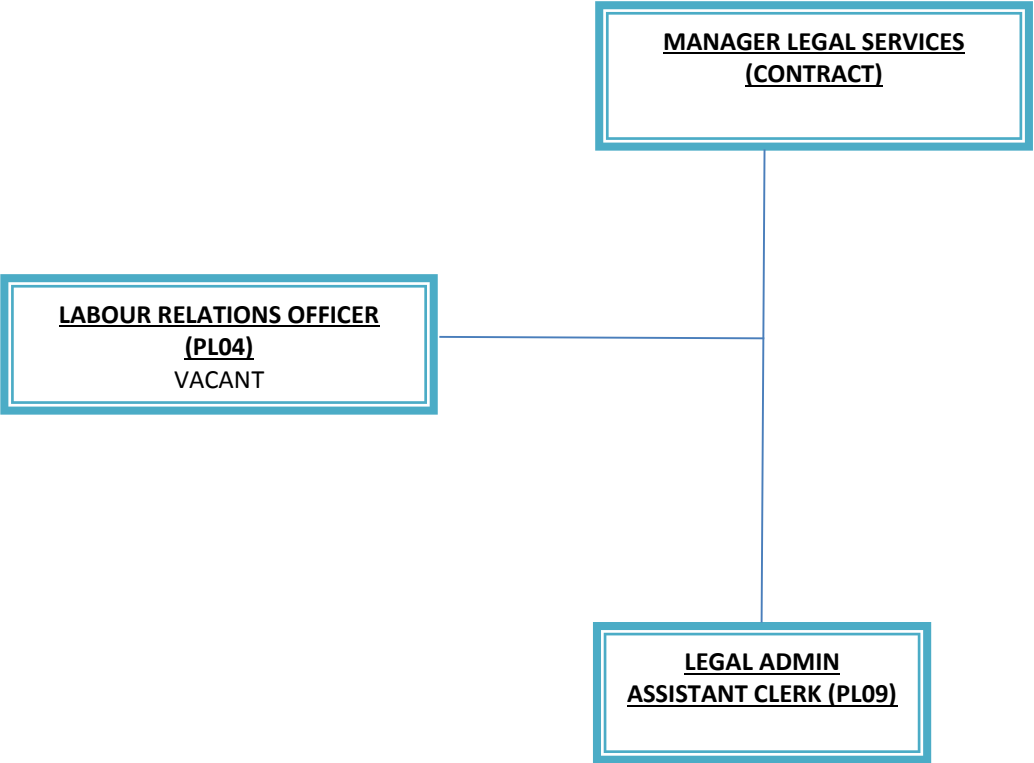
**DIVISION: HUMAN RESOURCES MANAGEMENT**



DIVISION: HUMAN RESOURCES DEVELOPMENT

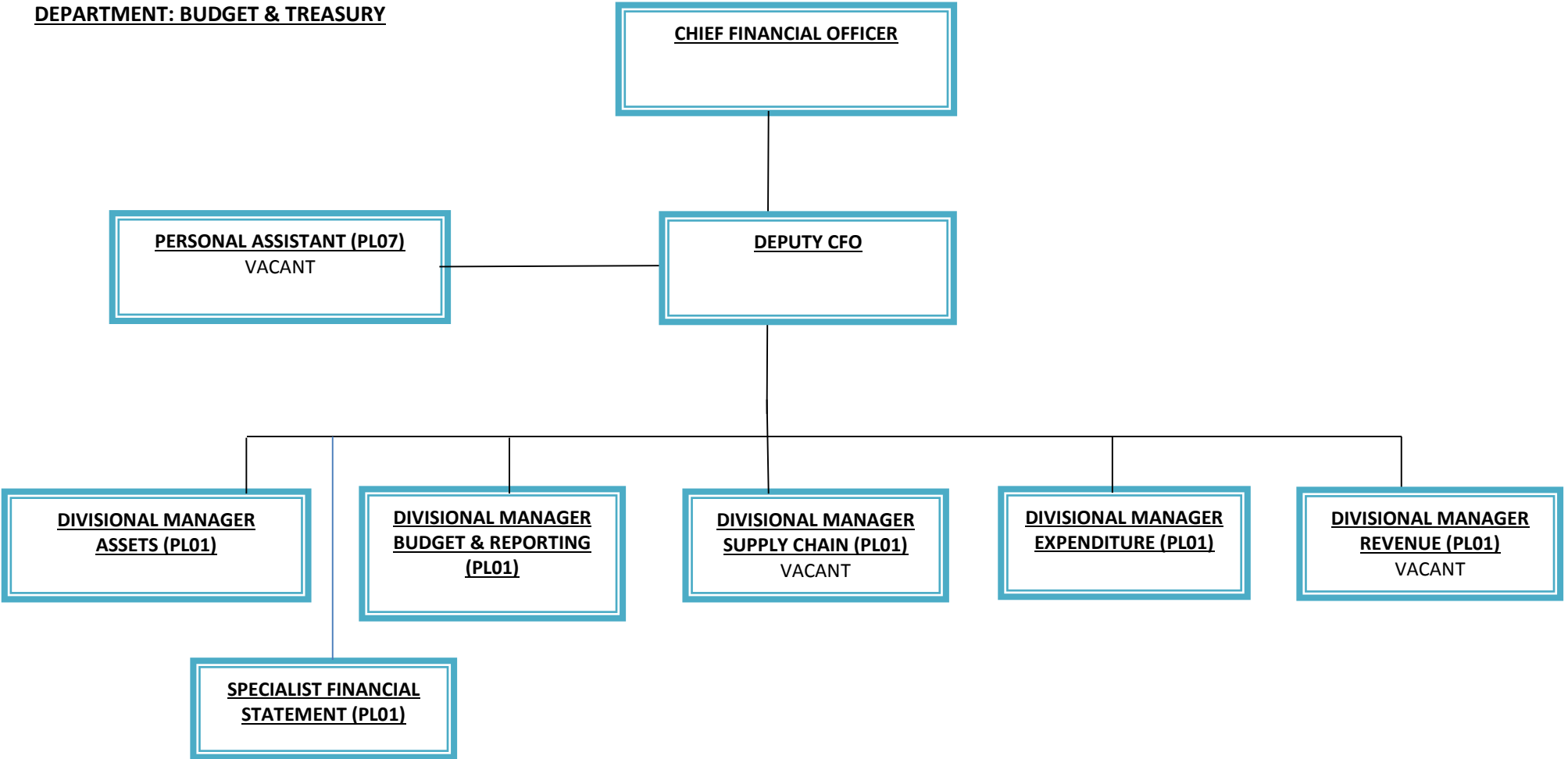


CORPORATE SERVICES

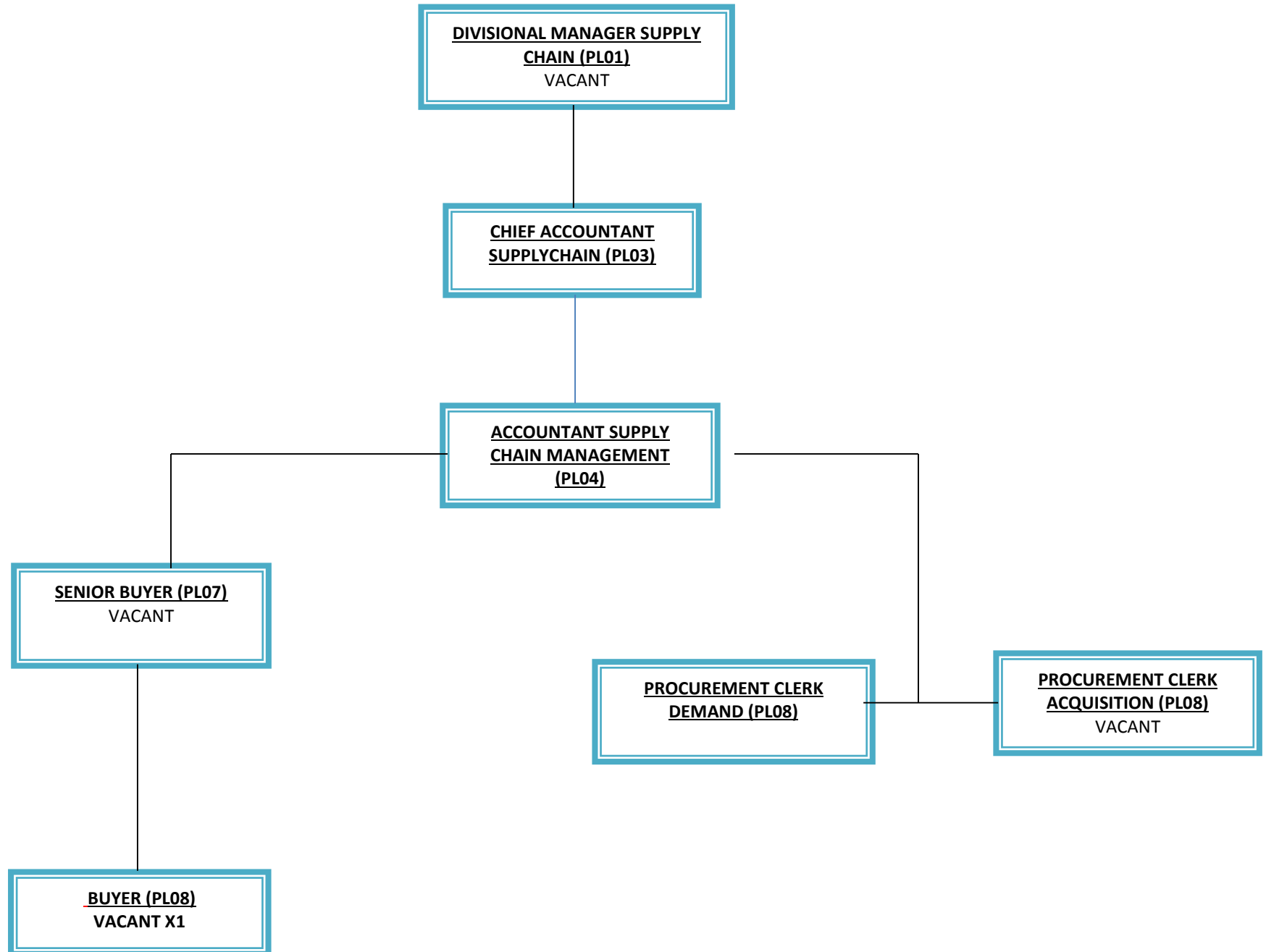


# **BUDGET & TREASURY ORGANOGRAM**

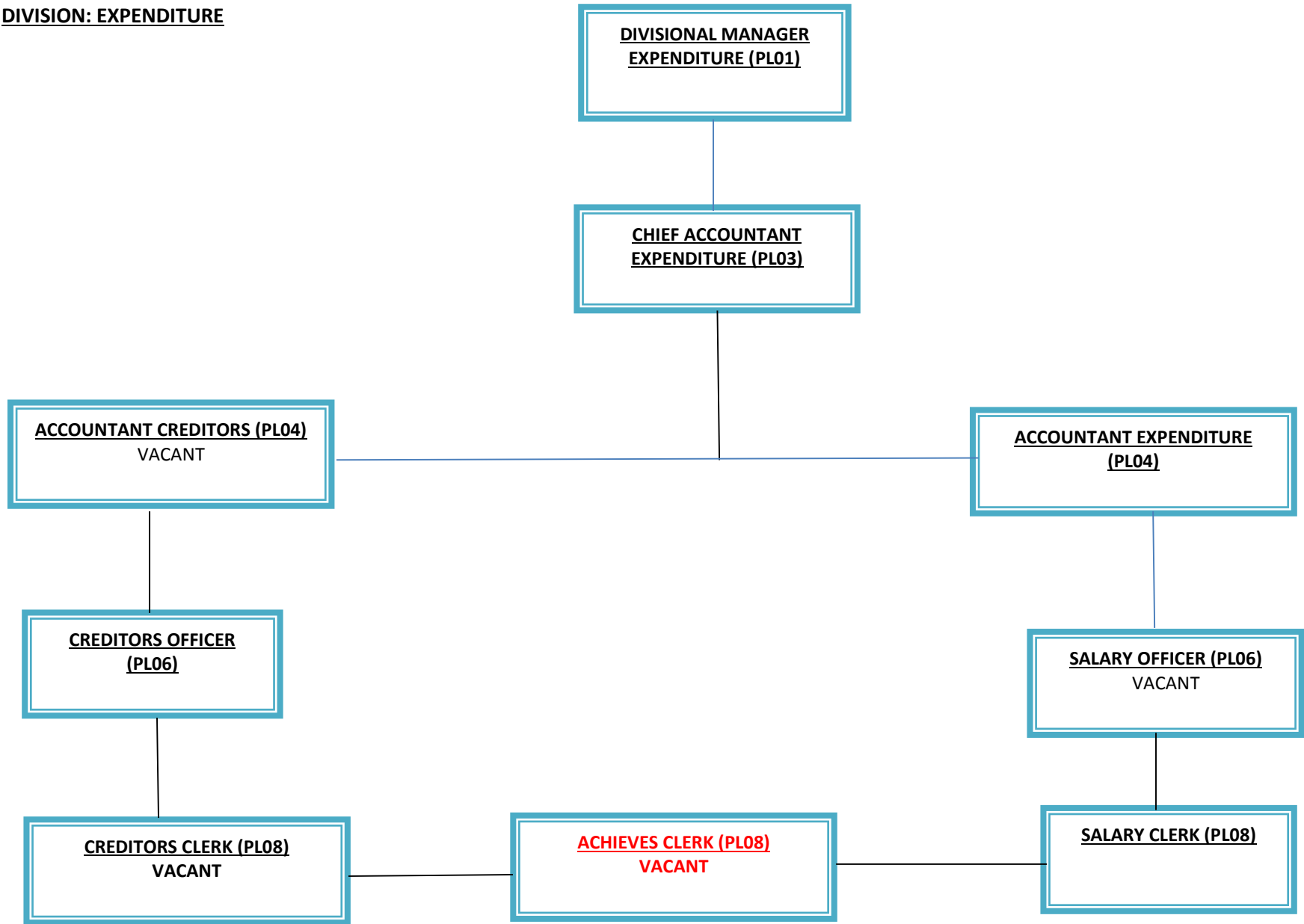
**DEPARTMENT: BUDGET & TREASURY**



**DIVISION: SUPPLY CHAIN**

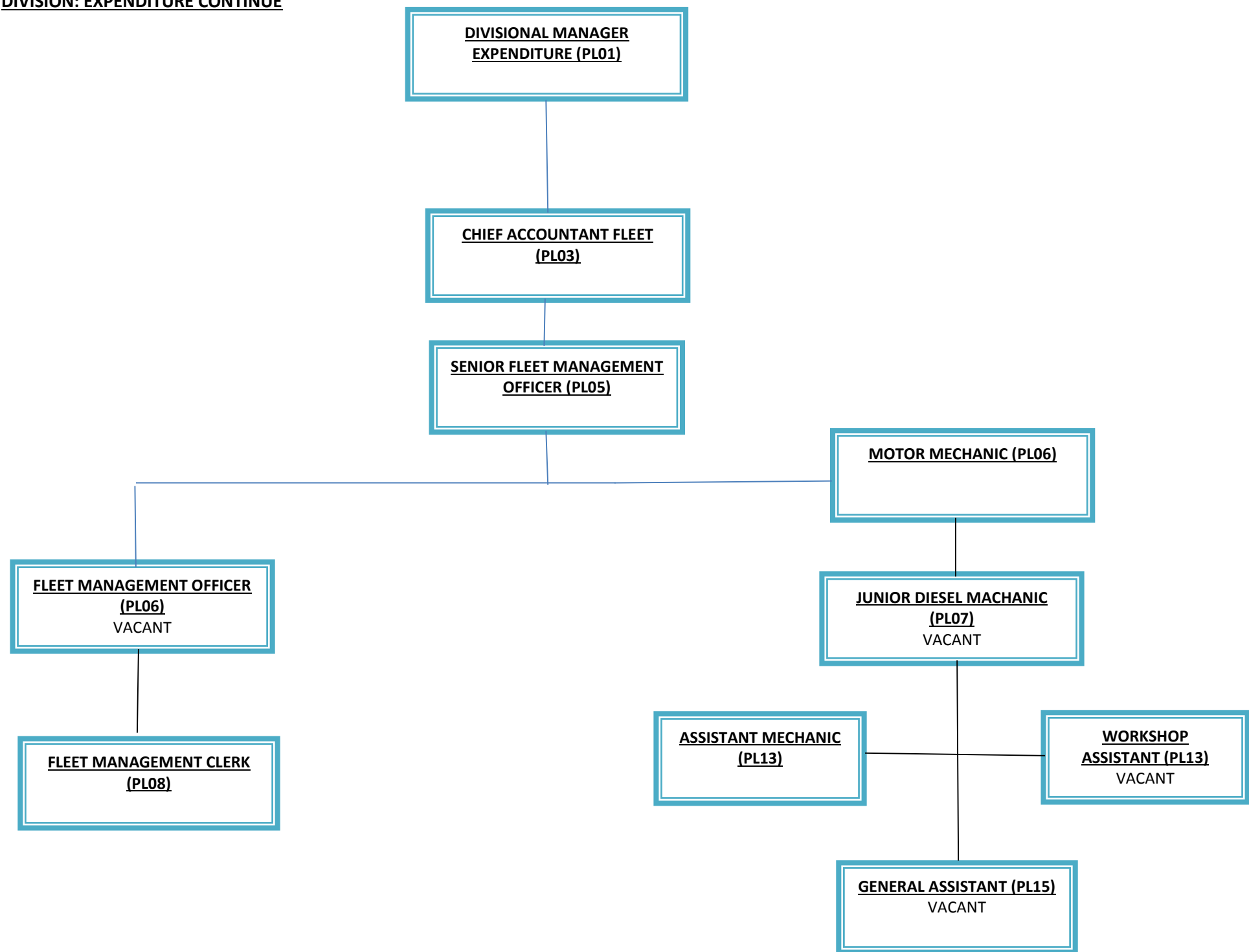


DIVISION: EXPENDITURE

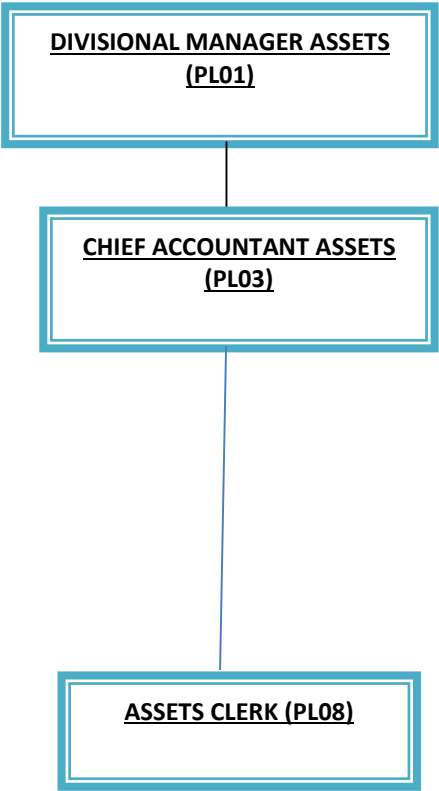




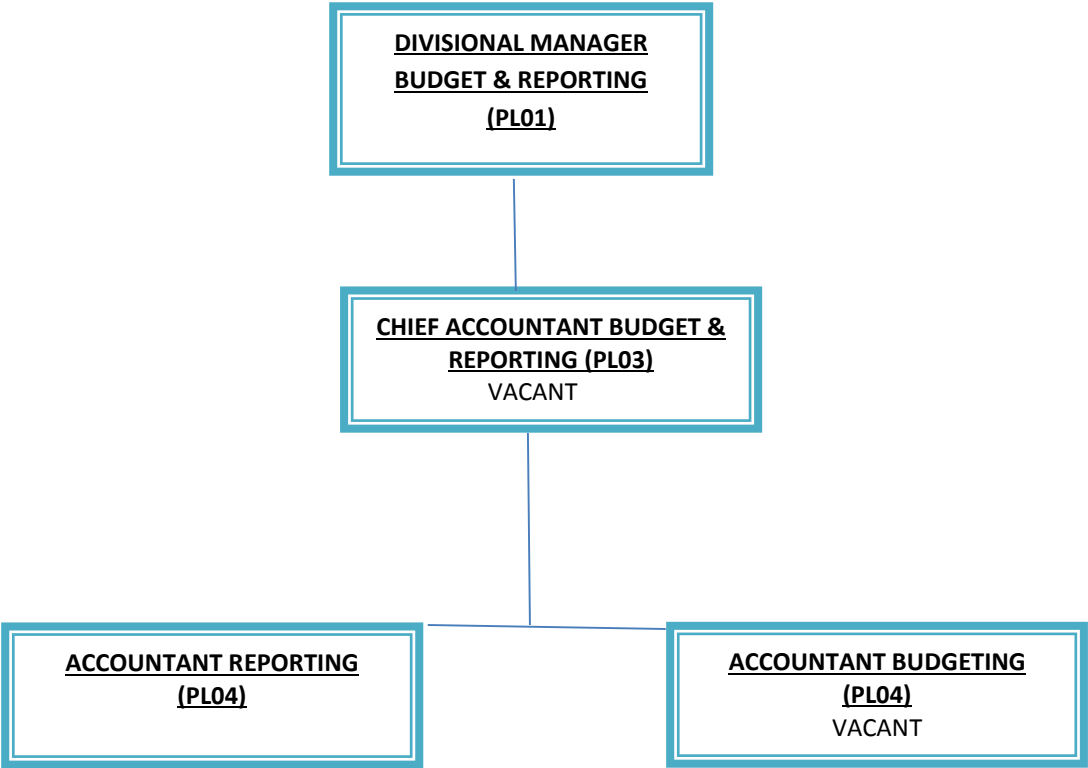
DIVISION: EXPENDITURE CONTINUE



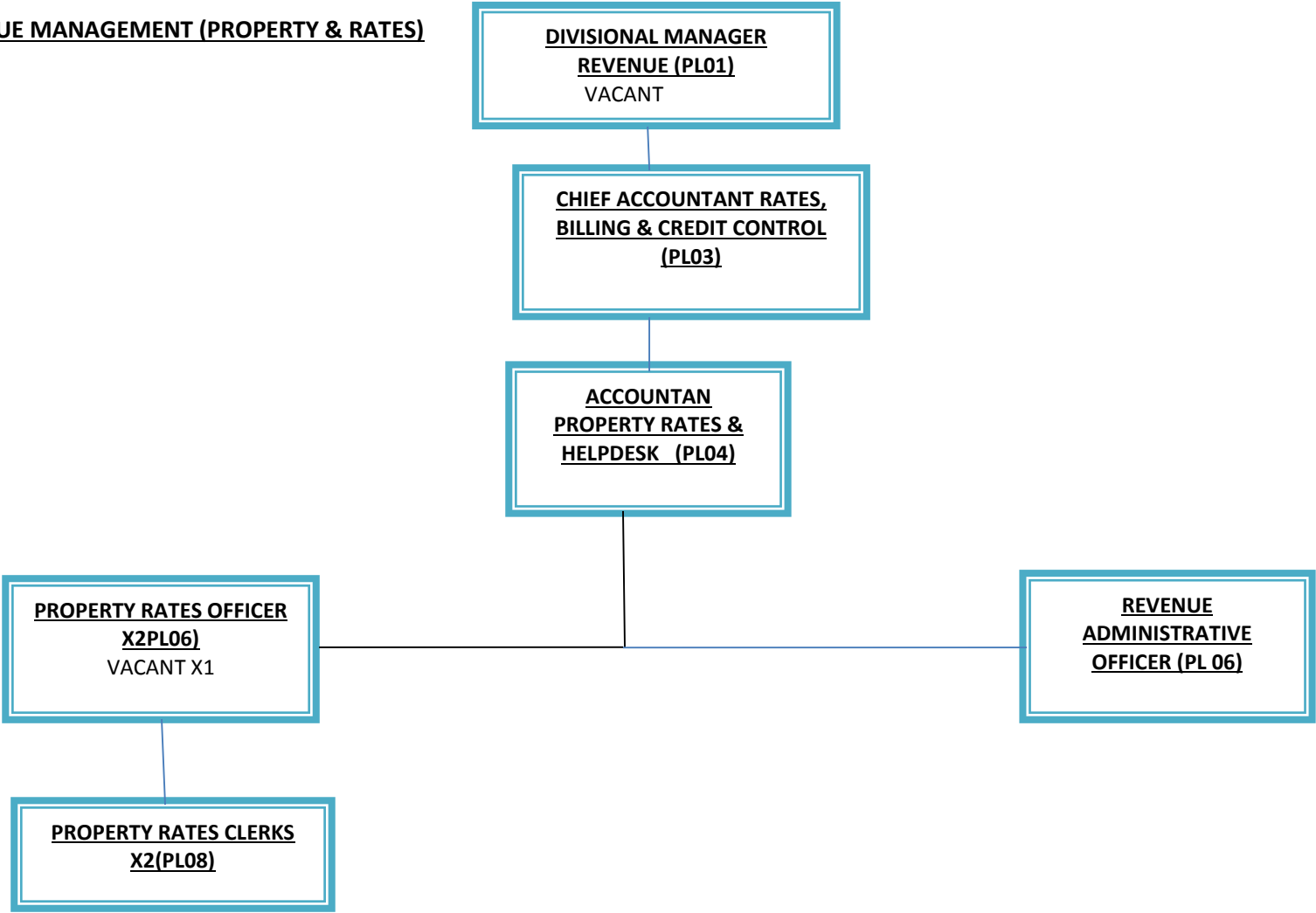
DIVISION ASSETS MANAGEMENT



DIVISION BUDGET & REPORTING



**DIVISION: REVENUE MANAGEMENT (PROPERTY & RATES)**



REVENUE MANAGEMENT CONTINUE

